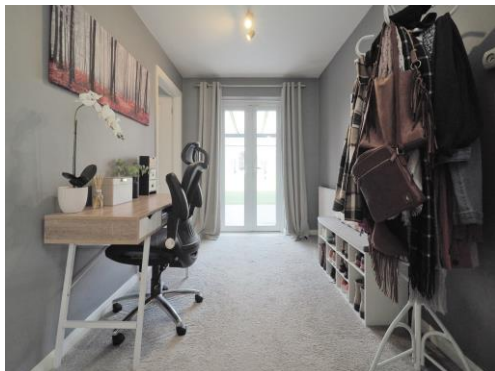




Connells

Poores Road
Durrington Salisbury



Property Description

****DECEPTIVE EXTERIOR**** - A stylish open-plan bungalow offering several luxury features including a DETACHED 25' x 14' OUTBUILDING which is ideal as an OFFICE FROM HOME or GAMES ROOM. There is also a bonus study area and 17 x 16 lounge with stylish open plan kitchen. The A303 is just minutes away.

Living Room

17' x 16' (5.18m x 4.88m)

Size incorporates chimney breast, front aspect.

Stylish Open Plan Kitchen

Comprising a single drainer sink unit with mixer taps, range of contemporary wall and base units with square topped work surfaces and tiled surrounds, built in oven, inset hob unit with concealed hood over, wine rack, space for washing machine, space for dishwasher, further appliance space, limed oak style floor.

Study Hall

13' x 7' 4" (3.96m x 2.24m)

Access to bedrooms and bathroom, French doors to garden.

Bedroom One

13' x 9' 6" (3.96m x 2.90m)

Rear aspect.

Bedroom Two

8' 7" x 8' 5" (2.62m x 2.57m)

Rear aspect.

Bathroom

Comprising a P'shaped bath with remotely operated temperature controlled shower with further rainhead shower over, wash hand basin and WC.

Outside

Rear Garden

A low maintenance garden with large covered terraced which is ideal for entertaining. Beyond is an area of artificial grass with borders and this leads to the outbuilding with large decked area. Beyond the outbuilding is a secure storage area.

Large Outbuilding

25' x 14' 5" (7.62m x 4.39m)

This room has many possibilities, including use as an Office from Home, gym or games room.

Small Garage Storage Area

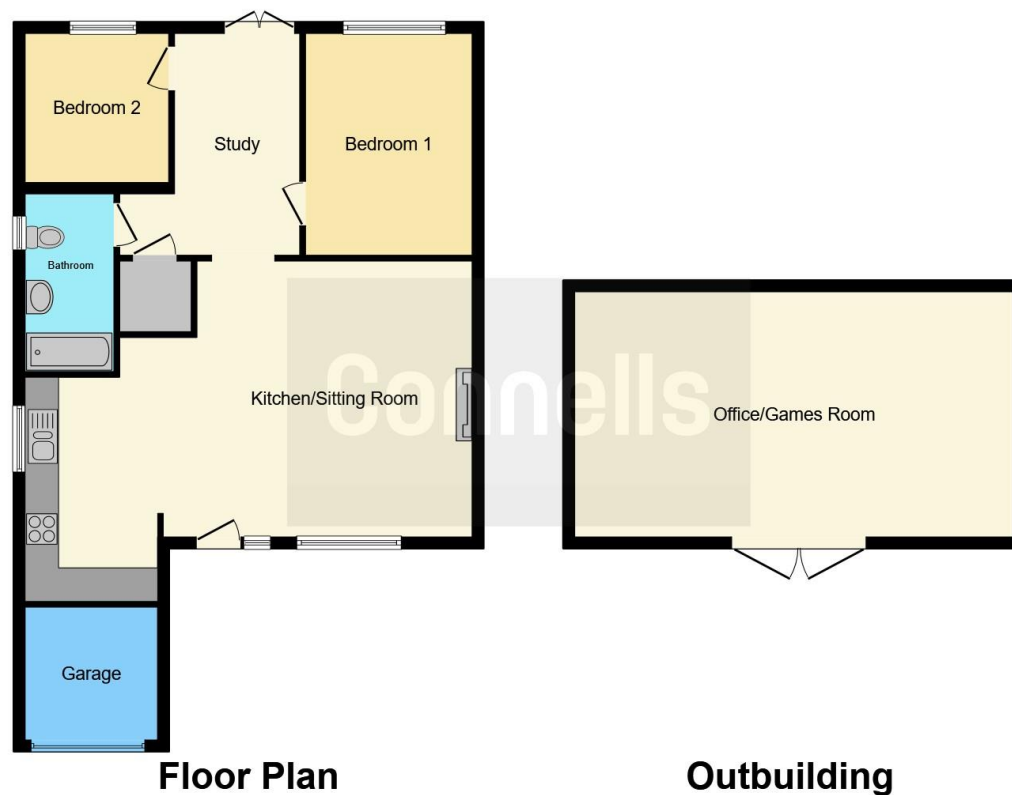
Driveway

Extensive parking to the front.









This floor plan is for illustrative purposes only. It is not drawn to scale. Any measurements, floor areas (including any total floor area), openings and orientation are approximate. No details are guaranteed, they cannot be relied upon for any purpose and they do not form part of any agreement. No liability is taken for any error, omission or misstatement. A party must rely upon its own inspection(s). Powered by www.focalagent.com

To view this property please contact Connells on

T 01980 622 662
E amesbury@connells.co.uk

Unit 3 23 Salisbury Street AMESBURY
 SALISBURY SP4 7AW

EPC Rating: D

Tenure: Freehold

view this property online connells.co.uk/Property/ABY308196



1. MONEY LAUNDERING REGULATIONS Intending purchasers will be asked to produce identification documentation at a later stage and we would ask for your co-operation in order that there will be no delay in agreeing the sale. 2. These particulars do not constitute part or all of an offer or contract. 3. The measurements indicated are supplied for guidance only and as such must be considered incorrect. Potential buyers are advised to recheck measurements before committing to any expense. 4. We have not tested any apparatus, equipment, fixtures, fittings or services and it is in the buyers interest to check the working condition of any appliances.

Connells Residential is registered in England and Wales under company number 1489613, Registered Office is Cumbria House, 16-20 Hockliffe Street, Leighton Buzzard, Bedfordshire, LU7 1GN. VAT Registration Number is 500 2481 05.

See all our properties at www.connells.co.uk | www.rightmove.co.uk | www.zoopla.co.uk

Property Ref: ABY308196 - 0006