



Connells

Beaulieu Road
Amesbury Salisbury



Property Description

A three bedroom semi-detached house with very large corner plot allowing for future extension (subject to planning).

Entrance Hall

Stairs to first floor landing, doors to living room and kitchen.

Lounge/ Dining Room

23' x 11' max (7.01m x 3.35m max)
Fitted fireplace, rear aspect.

Dining Area

Narrowing to 9' 2".

Kitchen

11' x 8' 3" (3.35m x 2.51m)
Comprising a single drainer sink unit with mixer taps, range of wall and base units with work surfaces, built in oven, further cooker space, space for washing machine, built in larder, front aspect, door to side.

Lobby

Appliance space, doors to front and rear, brick built shed.

Galleried Landing

Bedroom One

12' 6" x 10' (3.81m x 3.05m)
Rear aspect.

Bedroom Two

10' x 9' (3.05m x 2.74m)
Rear aspect.

Bedroom Three

8' 3" max x 7' max (2.51m max x 2.13m max)
Built in overstairs cupboard, front aspect.

Shower Room

Comprising a shower cubicle with pedestal wash hand basin.

Separate Wc

WC.

Outside

Corner Plot

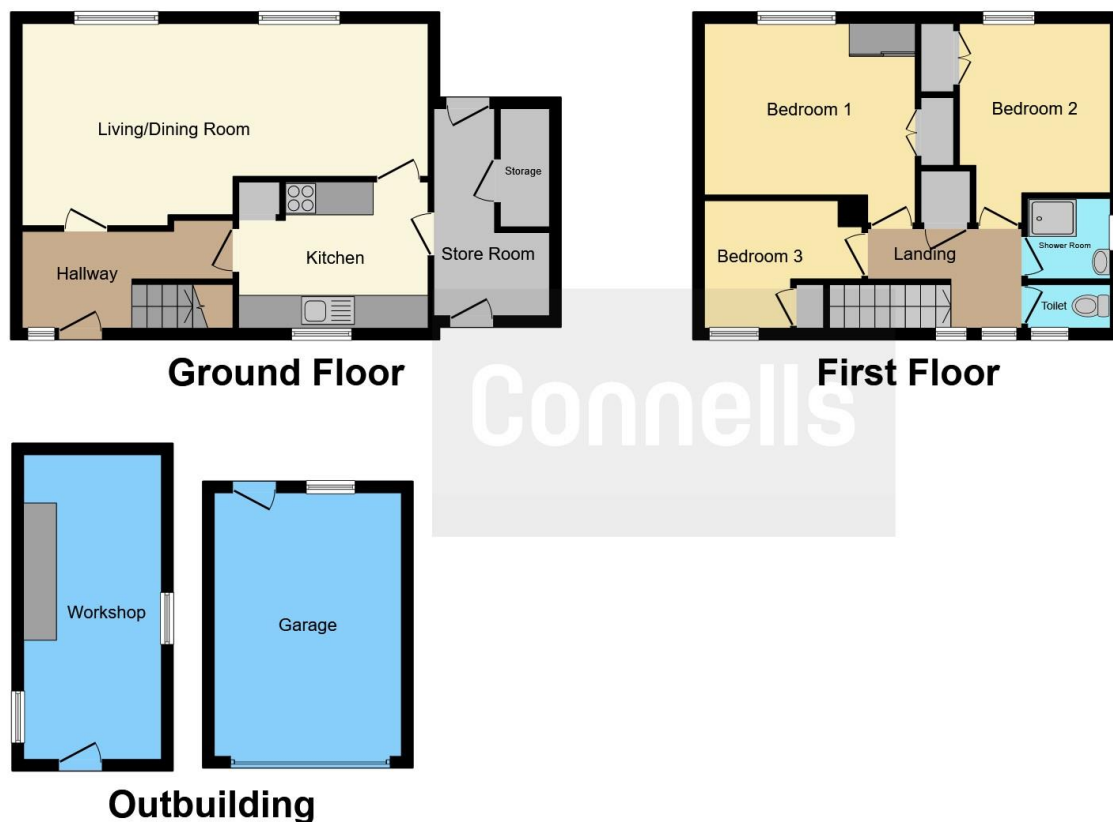
This very large wraparound corner plot is laid to lawn with mature shrubs and an outbuilding. There is also access to the garage..

Garage









This floor plan is for illustrative purposes only. It is not drawn to scale. Any measurements, floor areas (including any total floor area), openings and orientation are approximate. No details are guaranteed, they cannot be relied upon for any purpose and they do not form part of any agreement. No liability is taken for any error, omission or misstatement. A party must rely upon its own inspection(s). Powered by www.focalagent.com

To view this property please contact Connells on

T 01980 622 662
E amesbury@connells.co.uk

Unit 3 23 Salisbury Street AMESBURY
 SALISBURY SP4 7AW

EPC Rating: Awaited

Tenure: Freehold

view this property online connells.co.uk/Property/ABY308186



1. MONEY LAUNDERING REGULATIONS Intending purchasers will be asked to produce identification documentation at a later stage and we would ask for your co-operation in order that there will be no delay in agreeing the sale. 2. These particulars do not constitute part or all of an offer or contract. 3. The measurements indicated are supplied for guidance only and as such must be considered incorrect. Potential buyers are advised to recheck measurements before committing to any expense. 4. We have not tested any apparatus, equipment, fixtures, fittings or services and it is in the buyers interest to check the working condition of any appliances.

Connells Residential is registered in England and Wales under company number 1489613, Registered Office is Cumbria House, 16-20 Hockliffe Street, Leighton Buzzard, Bedfordshire, LU7 1GN. VAT Registration Number is 500 2481 05.

See all our properties at www.connells.co.uk | www.rightmove.co.uk | www.zoopla.co.uk

Property Ref: ABY308186 - 0003