



**Connells**

Marina Crescent  
Durrington Salisbury



## Property Description

Located in this lovely little backwater within the popular area of Durrington this detached bungalow offers a stylish 14' kitchen with built in appliances and large L-shaped 22max x 20 max lounge/dining room. There are two double bedrooms plus a useful loft room to the first floor if needed. Local amenities and the A303 are all just minutes away.

### Entrance Hall

Access to all rooms, fitted cupboards. stairs to informal loft room.

### L'shaped Living Room

22' 5" max x 20' 2" max ( 6.83m max x 6.15m max )

Fireplace, triple aspect with access to garden.

### Kitchen

14' 4" max x 11' 4" max ( 4.37m max x 3.45m max )

Comprising a single drainer sink unit with mixer taps, stylish range of wall and base units, built in oven and microwave, inset hob unit with steel hood over, built in and concealed washer drier, built in and concealed dishwasher, fridge/freezer recess, further appliance space, double aspect with French doors to garden, downlighters.

### Bedroom One

11' 10" max x 10' 5" max ( 3.61m max x 3.17m max )

Built in wardrobes, front aspect.

### Bedroom Two

11' 10" max x 8' 3" ( 3.61m max x 2.51m )

Door recess, front aspect.

### Shower Room

Comprising a large walk-in shower cubicle with drying area and glass screen, pedestal wash hand basin and WC.

### Loft Room

15' max x 13' 8" max ( 4.57m max x 4.17m max )

This informal room would make an ideal storage or hobby area.

### Outside

#### Front Garden

Offering good privacy the front garden is laid to lawn with established hedging and shrub borders.

#### Rear Garden

A low maintenance garden with Astro style turf and shingle is to the rear and again good privacy is obtained by a large hedge. There is the bonus of a greenhouse and courtesy lighting and to the side there is also a timber shed.

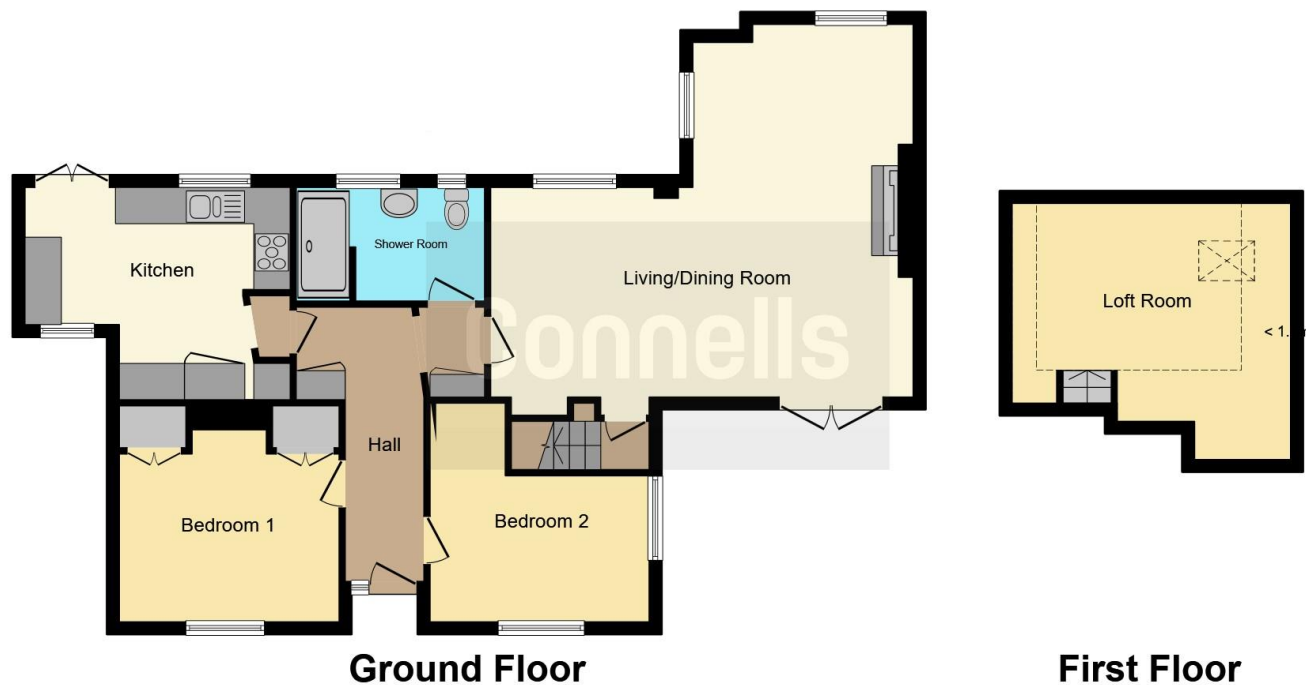
### Driveway

To the front.









This floor plan is for illustrative purposes only. It is not drawn to scale. Any measurements, floor areas (including any total floor area), openings and orientation are approximate. No details are guaranteed, they cannot be relied upon for any purpose and they do not form part of any agreement. No liability is taken for any error, omission or misstatement. A party must rely upon its own inspection(s). Powered by [www.focalagent.com](http://www.focalagent.com)

To view this property please contact Connells on

**T 01980 622 662**  
**E [amesbury@connells.co.uk](mailto:amesbury@connells.co.uk)**

Unit 3 23 Salisbury Street AMESBURY  
 SALISBURY SP4 7AW

**EPC Rating: D**

Tenure: Freehold

**view this property online [connells.co.uk/Property/ABY308046](http://connells.co.uk/Property/ABY308046)**



1. MONEY LAUNDERING REGULATIONS Intending purchasers will be asked to produce identification documentation at a later stage and we would ask for your co-operation in order that there will be no delay in agreeing the sale. 2. These particulars do not constitute part or all of an offer or contract. 3. The measurements indicated are supplied for guidance only and as such must be considered incorrect. Potential buyers are advised to recheck measurements before committing to any expense. 4. We have not tested any apparatus, equipment, fixtures, fittings or services and it is in the buyers interest to check the working condition of any appliances.

Connells Residential is registered in England and Wales under company number 1489613, Registered Office is Cumbria House, 16-20 Hockliffe Street, Leighton Buzzard, Bedfordshire, LU7 1GN. VAT Registration Number is 500 2481 05.

**See all our properties at [www.connells.co.uk](http://www.connells.co.uk) | [www.rightmove.co.uk](http://www.rightmove.co.uk) | [www.zoopla.co.uk](http://www.zoopla.co.uk)**

Property Ref: ABY308046 - 0005