



**Connells**

Princess Way  
Amesbury Salisbury





## Property Description

A high specification Bloor-built town house with whole top floor master suite, stylish kitchen/ dining room and a lovely garden with covered area perfect for entertaining. The property offers open views over an attractive green and is located minutes from the A303 and Salisbury.

### Entrance Hall

Stairs to first floor landing, door to lounge.

### Cloakroom

Comprising a WC and hanging wash hand basin.

### Lounge

13' 9" x 11' 9" ( 4.19m x 3.58m )

Stripped wood style floor, front aspect over green, built in cupboard.

### Kitchen/ Dining Room

12' 7" x 12' ( 3.84m x 3.66m )

Comprising a single drainer sink unit with mixer tap. stylish range of wall and base units with work surfaces over, built in oven, inset hob unit with hood over, space for dishwasher and fridge/freezer, downlighter spots, rear aspect with French doors to garden.

### Utility Area

wall and Base unit with work surface over and

space for washing machine, door to cloakroom.

### First Floor Landing

Stairs to whole top floor master suite, built in cupboard, lovely aspect to front over a green.

### Bedroom Two

14' 7" max x 8' 6" max ( 4.45m max x 2.59m max )

Rear aspect with extensive views to distant countryside.

### Bedroom Three

11' 8" max x 8' 6" max ( 3.56m max x 2.59m max )

Lovely aspect to front.

### Four Piece Bathroom

Comprising a panel enclosed bath with separate shower cubicle, pedestal wash hand basin, WC, heated towel rail.

### Second Floor Master Suite

#### Landing

#### Master Bedroom

13' 3" extending to 16' 7" max into bay x 11' 10" ( 4.04m extending to 5.05m max into bay x 3.61m )

Size incorporates twin built in double mirrored wardrobes, front aspect with view over park.

## Study/ Dressing Area

7' 5" x 5' 8" ( 2.26m x 1.73m )

Velux style window.

## Ensuite

Comprising a double shower cubicle with wash hand basin and WC, heated towel rail, Velux style window.

## Outside

## Rear Garden

The garden is low maintenance in design and is perfect for entertaining or relaxing with an evening glass of wine or morning coffee. There is also an external power supply, outside tap and gated side access.

## Garage

With up and over door and eaves storage space and approached by a private driveway.



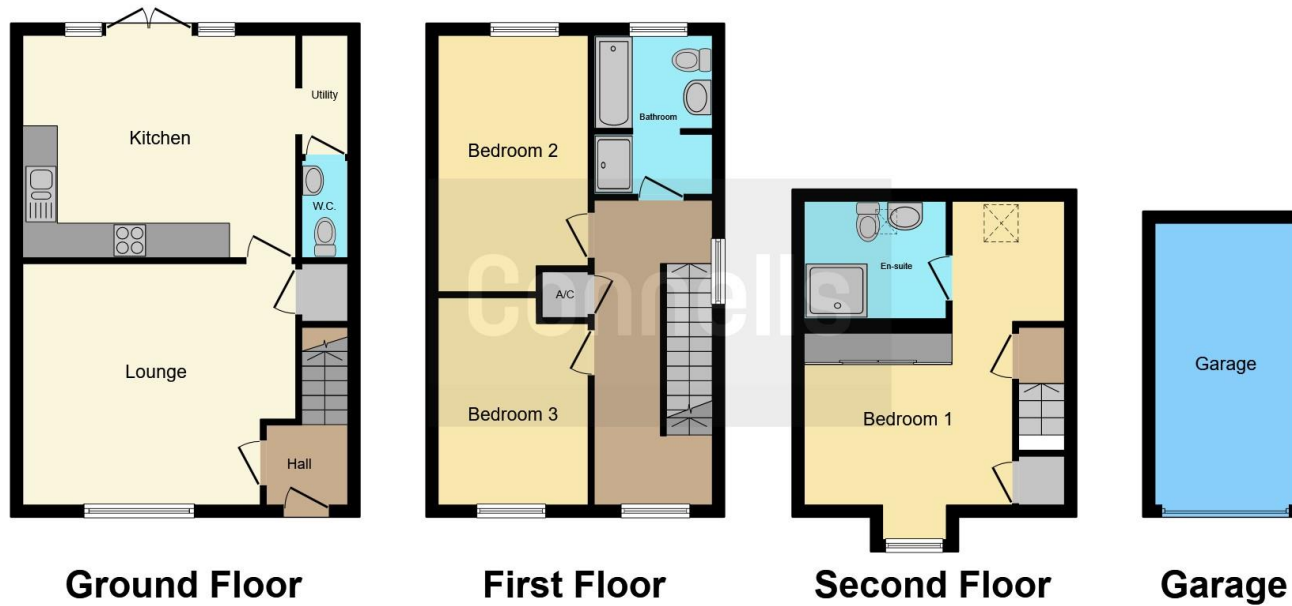












This floor plan is for illustrative purposes only. It is not drawn to scale. Any measurements, floor areas (including any total floor area), openings and orientation are approximate. No details are guaranteed, they cannot be relied upon for any purpose and they do not form part of any agreement. No liability is taken for any error, omission or misstatement. A party must rely upon its own inspection(s). Powered by [www.focalagent.com](http://www.focalagent.com)

To view this property please contact Connells on

**T 01980 622 662**  
**E [amesbury@connells.co.uk](mailto:amesbury@connells.co.uk)**

Unit 3 23 Salisbury Street AMESBURY  
 SALISBURY SP4 7AW

**EPC Rating: B**

Tenure: Freehold

**view this property online [connells.co.uk/Property/ABY308004](http://connells.co.uk/Property/ABY308004)**



1. MONEY LAUNDERING REGULATIONS Intending purchasers will be asked to produce identification documentation at a later stage and we would ask for your co-operation in order that there will be no delay in agreeing the sale. 2. These particulars do not constitute part or all of an offer or contract. 3. The measurements indicated are supplied for guidance only and as such must be considered incorrect. Potential buyers are advised to recheck measurements before committing to any expense. 4. We have not tested any apparatus, equipment, fixtures, fittings or services and it is in the buyers interest to check the working condition of any appliances.

Connells Residential is registered in England and Wales under company number 1489613, Registered Office is Cumbria House, 16-20 Hockliffe Street, Leighton Buzzard, Bedfordshire, LU7 1GN. VAT Registration Number is 500 2481 05.

**See all our properties at [www.connells.co.uk](http://www.connells.co.uk) | [www.rightmove.co.uk](http://www.rightmove.co.uk) | [www.zoopla.co.uk](http://www.zoopla.co.uk)**

Property Ref: ABY308004 - 0003