



Connells

Pickernell Road
Tidworth



Property Description

This freehold semi-detached house has lovely views to the rear and also offers an ensuite to the master bedroom and a downstairs cloakroom. The property is offered with no onward chain. Tidworth is well located within access of the A303, Andover and Salisbury,

Entrance Hall

Access to lounge and cloakroom, stairs to first floor landing.

Cloakroom

Comprising a wash hand basin and WC.

Lounge

15' 7" max x 12' max (4.75m max x 3.66m max)

Front aspect.

Kitchen/Dining Room

15' 2" x 9' 5" (4.62m x 2.87m)

Comprising a single drainer unit with mixer taps, range of wall and base units with work surfaces over, built in oven, inset gas hob unit with concealed hood over, space for washing machine and dishwasher, further appliance space, rear aspect with French doors to garden

Landing

Built in cupboard.

Master Bedroom

11' 8" max x 9' 5" max (3.56m max x 2.87m max)

Built in wardrobe, front aspect.

Ensuite

Comprising a shower cubicle with pedestal wash hand basin and WC.

Bedroom Two

9' x 7' 5" (2.74m x 2.26m)

Lovely views to rear.

Bedroom Three

7' 5" x 6' (2.26m x 1.83m)

Lovely aspect to rear.

Bathroom

Comprising a panel enclosed bath with pedestal wash hand basin and WC,

Outside

Rear Garden

A well-established and mature garden with beds and borders and featuring a patio area with further bistro patio at the rear. There is gated access.

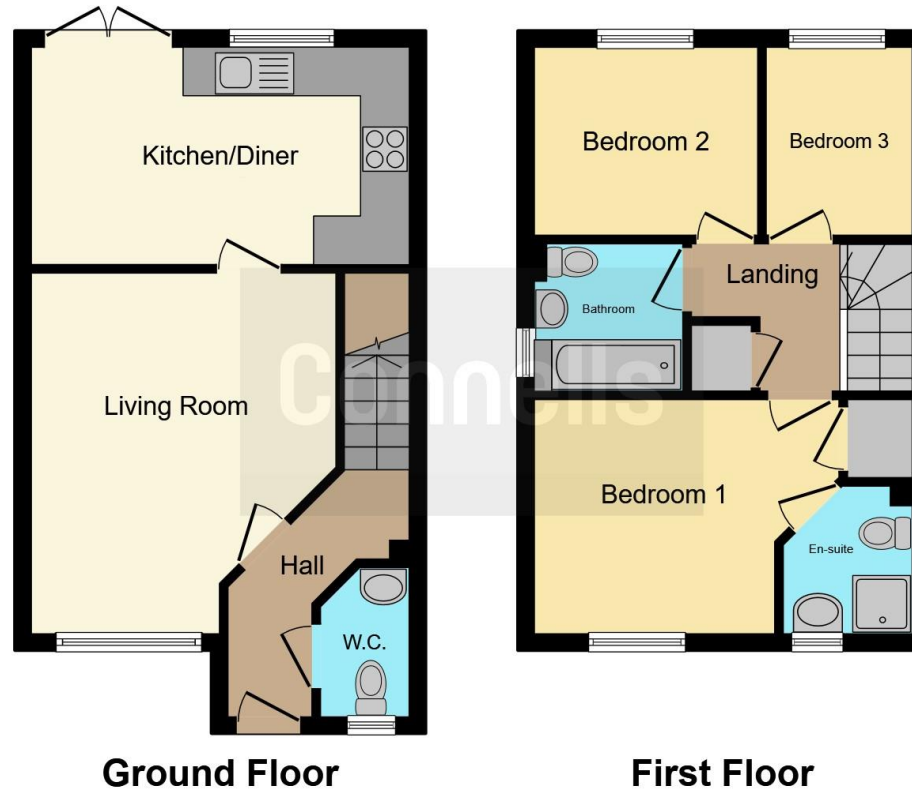
Driveway

Close by and for two cars.









This floor plan is for illustrative purposes only. It is not drawn to scale. Any measurements, floor areas (including any total floor area), openings and orientation are approximate. No details are guaranteed, they cannot be relied upon for any purpose and they do not form part of any agreement. No liability is taken for any error, omission or misstatement. A party must rely upon its own inspection(s). Powered by www.focalagent.com

To view this property please contact Connells on

T 01980 622 662
E amesbury@connells.co.uk

Unit 3 23 Salisbury Street AMESBURY
 SALISBURY SP4 7AW

EPC Rating: B

Tenure: Freehold

view this property online connells.co.uk/Property/ABY307963



1. MONEY LAUNDERING REGULATIONS Intending purchasers will be asked to produce identification documentation at a later stage and we would ask for your co-operation in order that there will be no delay in agreeing the sale. 2. These particulars do not constitute part or all of an offer or contract. 3. The measurements indicated are supplied for guidance only and as such must be considered incorrect. Potential buyers are advised to recheck measurements before committing to any expense. 4. We have not tested any apparatus, equipment, fixtures, fittings or services and it is in the buyers interest to check the working condition of any appliances.

Connells Residential is registered in England and Wales under company number 1489613, Registered Office is Cumbria House, 16-20 Hockliffe Street, Leighton Buzzard, Bedfordshire, LU7 1GN. VAT Registration Number is 500 2481 05.

See all our properties at www.connells.co.uk | www.rightmove.co.uk | www.zoopla.co.uk

Property Ref: ABY307963 - 0007