



Connells

Pointers Way
Amesbury Salisbury



Property Description

This ideal family home features four bedrooms and open plan accommodation on the ground floor. On the top floor is a superb master suite and the property is located minutes from the A303 and Salisbury. Along with a driveway to the front there is a bonus car barn close by under a coach house.

Entrance Hall

Stairs to first floor landing, access to cloakroom, lounge and kitchen.

Cloakroom

Comprising a wash hand basin and WC.

Lounge/ Dining Room

21' max into bay x 16' max (6.40m max into bay x 4.88m max)

Rear aspect with French doors to garden.

Kitchen

9' 4" x 9' (2.84m x 2.74m)

Comprising a single drainer sink unit with mixer taps, range of wall and base units with work surfaces over, built in oven, inset gas hob unit with hood over, space for washing machine, further appliance space, front aspect.

First Floor Landing

Stairs to second floor master suite.

Bedroom Two

16' x 8' 7" max (4.88m x 2.62m max)

Front aspect.

Bedroom Three

9' 5" max x 9' 2" max (2.87m max x 2.79m max)

Rear aspect.

Bedroom Four

8' x 6' 6" (2.44m x 1.98m)

Rear aspect.

Bathroom

Comprising a panel enclosed bath with shower attachment, pedestal wash hand basin and WC.

Second Floor Master Suite

Landing

Door to..

Master Bedroom

14' 8" max x 12' 8" max (4.47m max x 3.86m max)

Size incorporates the ensuite area with bay to front aspect and further inner hall area with built in double wardrobes and single wardrobe.

Ensuite

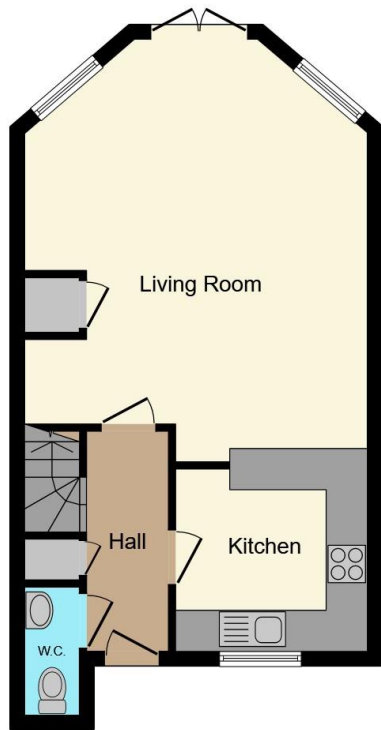
Comprising a shower cubicle with wash hand basin and WC. Heated towel rail.

Outside

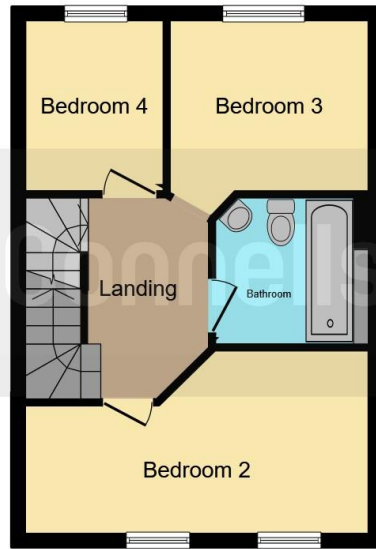








Ground Floor



First Floor



Second Floor

This floor plan is for illustrative purposes only. It is not drawn to scale. Any measurements, floor areas (including any total floor area), openings and orientation are approximate. No details are guaranteed, they cannot be relied upon for any purpose and they do not form part of any agreement. No liability is taken for any error, omission or misstatement. A party must rely upon its own inspection(s). Powered by www.focalagent.com

To view this property please contact Connells on

T 01980 622 662
E amesbury@connells.co.uk

Unit 3 23 Salisbury Street AMESBURY
SALISBURY SP4 7AW

EPC Rating: Awaiting

Tenure: Freehold

view this property online connells.co.uk/Property/ABY307925



1. MONEY LAUNDERING REGULATIONS Intending purchasers will be asked to produce identification documentation at a later stage and we would ask for your co-operation in order that there will be no delay in agreeing the sale. 2. These particulars do not constitute part or all of an offer or contract. 3. The measurements indicated are supplied for guidance only and as such must be considered incorrect. Potential buyers are advised to recheck measurements before committing to any expense. 4. We have not tested any apparatus, equipment, fixtures, fittings or services and it is in the buyers interest to check the working condition of any appliances.

Connells Residential is registered in England and Wales under company number 1489613, Registered Office is Cumbria House, 16-20 Hockliffe Street, Leighton Buzzard, Bedfordshire, LU7 1GN. VAT Registration Number is 500 2481 05.

See all our properties at www.connells.co.uk | www.rightmove.co.uk | www.zoopla.co.uk

Property Ref: ABY307925 - 0002