



Connells

Salisbury Road
Bulford Salisbury



Property Description

Offering a large rear corner plot garden, this traditional semi-detached house offers a high degree of privacy and a delightful outlook. Features include a fantastic wrap-around conservatory, three good bedrooms and a stylish boutique-style four piece bathroom. The village of Bulford is located just minutes from the A303 and Salisbury.

Entrance Hall

Staircase to first floor.

Lounge

14' x 14' Max (4.27m x 4.27m Max)
Feature fireplace, front aspect.

Large Dining/Snug Conservatory

22' max x 14' max (6.71m max x 4.27m max)
Large wrap-around L shaped conservatory allowing for flexible reception areas depending on needs, French doors to garden, ceiling fan.

Kitchen

12' x 9' (3.66m x 2.74m)
Comprising a single drainer sink unit, range of wall and base units with work tops over, built in and concealed dishwasher, space for cooker, further appliance space, rear aspect, large understairs cupboard housing boiler.

Utility Area

10' 2" x 5' 5" (3.10m x 1.65m)
Comprising base units with work surface over and with washing machine space under, French doors to garden and access to...

Utility Outhouse

8' 2" x 6' (2.49m x 1.83m)
Eaves storage area, appliance space.

Four Piece Bathroom

Comprising a panel enclosed bath with separate shower cubicle, wash hand basin set on vanity unit, WC with concealed cistern, downlighter spots.

Landing

Bedroom One

14' widening to 17' 7" x 11' (4.27m widening to 17' 7" x 3.35m)
Front aspect with view.

Bedroom Two

9' x 9' (2.74m x 2.74m)
Rear aspect.

Bedroom Three

12' max x 8' 7" max (3.66m max x 2.62m max)
Victorian-style fireplace, rear aspect.

Outside

Rear Corner Plot

This lovely garden is a real feature, offering excellent privacy and a gorgeous outlook. There is a good sized patio which is ideal for entertaining and a shaped lawn area with mature borders. Further features include outhouses, an external water supply, courtesy lighting and gated side access.

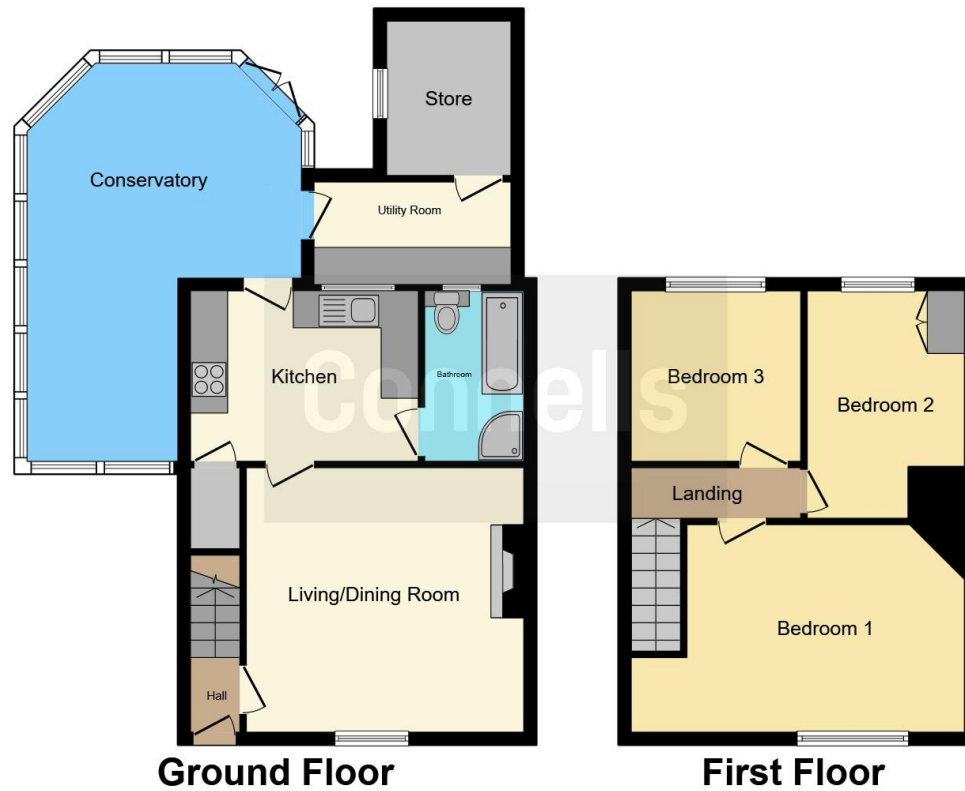
Parking

There is a communal layby for parking close by.









This floor plan is for illustrative purposes only. It is not drawn to scale. Any measurements, floor areas (including any total floor area), openings and orientation are approximate. No details are guaranteed, they cannot be relied upon for any purpose and they do not form part of any agreement. No liability is taken for any error, omission or misstatement. A party must rely upon its own inspection(s). Powered by www.focalagent.com

To view this property please contact Connells on

T 01980 622 662
E amesbury@connells.co.uk

Unit 3 23 Salisbury Street AMESBURY
 SALISBURY SP4 7AW

EPC Rating: C

Tenure: Freehold

view this property online connells.co.uk/Property/ABY306624



1. MONEY LAUNDERING REGULATIONS Intending purchasers will be asked to produce identification documentation at a later stage and we would ask for your co-operation in order that there will be no delay in agreeing the sale. 2. These particulars do not constitute part or all of an offer or contract. 3. The measurements indicated are supplied for guidance only and as such must be considered incorrect. Potential buyers are advised to recheck measurements before committing to any expense. 4. We have not tested any apparatus, equipment, fixtures, fittings or services and it is in the buyers interest to check the working condition of any appliances.

Connells Residential is registered in England and Wales under company number 1489613, Registered Office is Cumbria House, 16-20 Hockliffe Street, Leighton Buzzard, Bedfordshire, LU7 1GN. VAT Registration Number is 500 2481 05.

See all our properties at www.connells.co.uk | www.rightmove.co.uk | www.zoopla.co.uk

Property Ref: ABY306624 - 0002