



**Connells**

Countess Road  
Amesbury Salisbury





## Property Description

Connells are pleased to offer this four bedroom detached house set in a prime location with a large and widening rear garden offering lovely views over fields. There is scope for extension (STP) and the A303 is just minutes away.

## Entrance Hall

Stairs to first floor landing.

## Cloakroom

Comprising a WC and wash hand basin.

## Lounge/ Dining Room

17' max x 16' 9" max ( 5.18m max x 5.11m max )

French doors to garden with wonderful views over garden and beyond, understairs cupboard.

## Kitchen/ Breakfast Room

19' x 10' max ( 5.79m x 3.05m max )

Comprising a single drainer sink unit with monoblock taps, range of wall and base units with granite work surfaces and stylish edged marble surround, built in double oven, inset hob unit with contemporary hood over, space for dishwasher, washing machine, tumble drier and fridge/freezer, tiled floor, double aspect with aspect to front and rear.

## Landing

Access to loft space.

## Bedroom One

12' x 11' ( 3.66m x 3.35m )

Front aspect.

## Bedroom Two

10' 8" x 10' ( 3.25m x 3.05m )

Front aspect.

## Bedroom Three

9' x 7' ( 2.74m x 2.13m )

Stunning aspect to rear.

## Bedroom Four

Rear aspect.

## Bathroom

Comprising a panel enclosed bath with shower, wash hand basin, WC, tiled surrounds, heated towel rail.

## Outside

## Rear Garden

This lovely large garden widens towards the end and offers an outstanding view over countryside. The garden is extensively laid to

lawn with a large, decked area and features well-established borders together with gated side access to both sides and an outside water supply along with a personal door to the garage.

## Garage

Attached with up and over door, power and light and with a personal door to the garden.



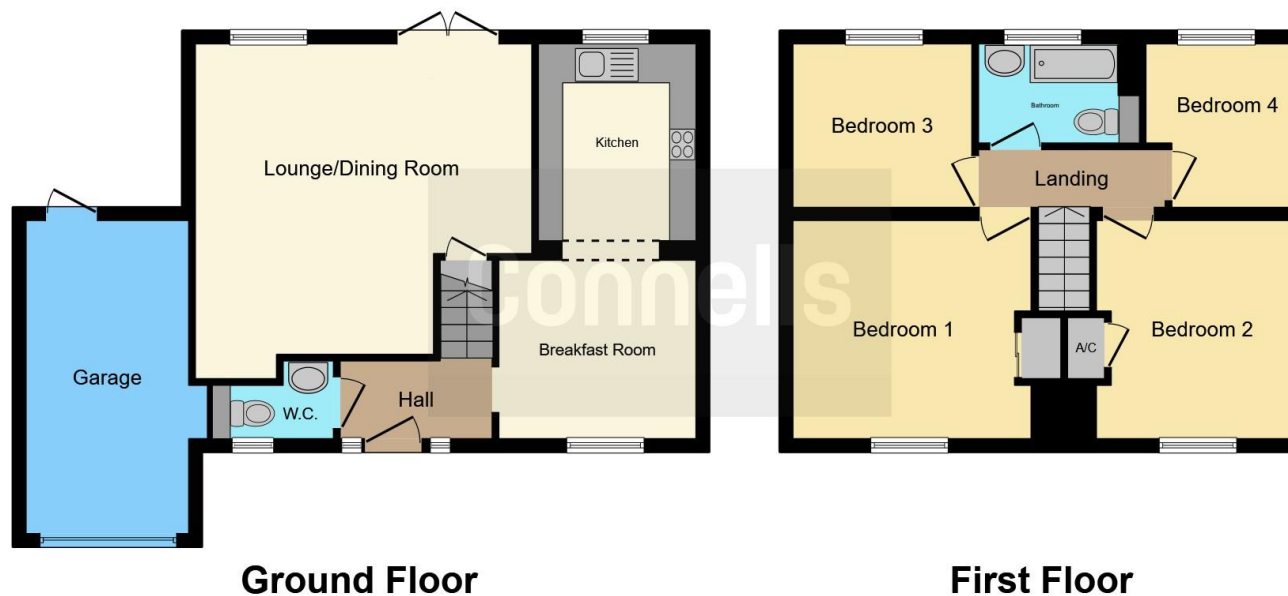












This floor plan is for illustrative purposes only. It is not drawn to scale. Any measurements, floor areas (including any total floor area), openings and orientation are approximate. No details are guaranteed, they cannot be relied upon for any purpose and they do not form part of any agreement. No liability is taken for any error, omission or misstatement. A party must rely upon its own inspection(s). Powered by [www.focalagent.com](http://www.focalagent.com)

To view this property please contact Connells on

**T 01980 622 662**  
**E [amesbury@connells.co.uk](mailto:amesbury@connells.co.uk)**

Unit 3 23 Salisbury Street AMESBURY  
 SALISBURY SP4 7AW

**EPC Rating: D**

Tenure: Freehold

**view this property online [connells.co.uk/Property/ABY307908](http://connells.co.uk/Property/ABY307908)**



1. MONEY LAUNDERING REGULATIONS Intending purchasers will be asked to produce identification documentation at a later stage and we would ask for your co-operation in order that there will be no delay in agreeing the sale. 2. These particulars do not constitute part or all of an offer or contract. 3. The measurements indicated are supplied for guidance only and as such must be considered incorrect. Potential buyers are advised to recheck measurements before committing to any expense. 4. We have not tested any apparatus, equipment, fixtures, fittings or services and it is in the buyers interest to check the working condition of any appliances.

Connells Residential is registered in England and Wales under company number 1489613, Registered Office is Cumbria House, 16-20 Hockliffe Street, Leighton Buzzard, Bedfordshire, LU7 1GN. VAT Registration Number is 500 2481 05.

**See all our properties at [www.connells.co.uk](http://www.connells.co.uk) | [www.rightmove.co.uk](http://www.rightmove.co.uk) | [www.zoopla.co.uk](http://www.zoopla.co.uk)**

Property Ref: ABY307908 - 0002