



Connells

Goldthorp Avenue
Amesbury Salisbury



Property Description

A double fronted Bloor built detached house with larger garden situated within this recently built development located within easy access of the A303, Salisbury and Andover. The property benefits from an ensuite to the master and private double width driveway. There is no onward chain.

Entrance Hall

Return staircase to first floor landing with window halfway to rear aspect, access to cloakroom, lounge and kitchen/ dining room, built in cupboard

Cloakroom

Comprising a WC and hanging wash hand basin.

Triple Aspect Lounge

16' x 11' 3" (4.88m x 3.43m)

Triple aspect with windows to front and side and French doors to the rear.

Kitchen/ Dining Room

16' x 8' 5" (4.88m x 2.57m)

Comprising a single drainer sink unit with mixer taps, range of wall and base units with work surfaces over, built in oven, inset hob unit with steel hood over, space for dishwasher and washing machine, further appliance space, downlighter spots.

Landing

Built in storage cupboard, access to loft space.

Master Bedroom

9' 6" x 9' 3" (2.90m x 2.82m)

Built in double wardrobe, rear aspect.

Ensuite

Comprising a double shower cubicle with pedestal wash hand basin and WC.

Bedroom Two

11' x 8' 2" (3.35m x 2.49m)

Double aspect to front and side.

Bedroom Three

11' 4" x 7' (3.45m x 2.13m)

Rear aspect.

Bathroom

Comprising a panel enclosed bath with built in shower and glass screen, pedestal wash hand basin, WC, heated towel rail.

Outside

Rear Garden

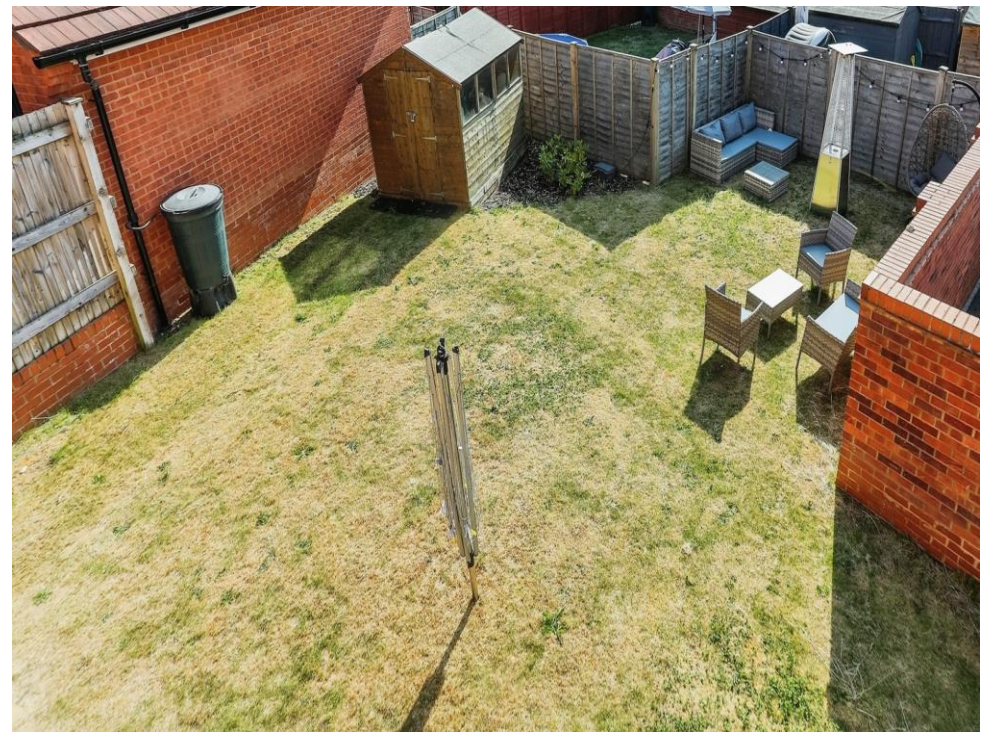
A larger garden being extensively laid to lawn

with patio and gated side access leading to the private double driveway.

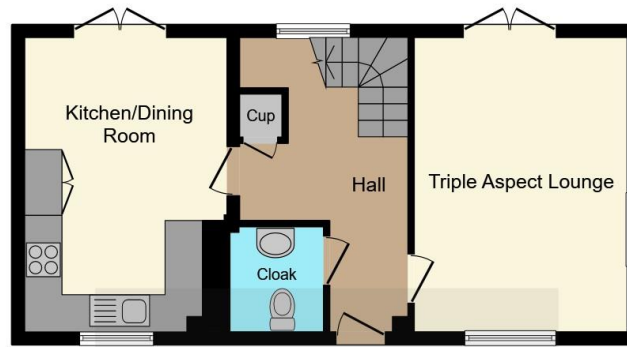
Double Width Driveway

Enclosed by wall and with a gate leading to the garden.

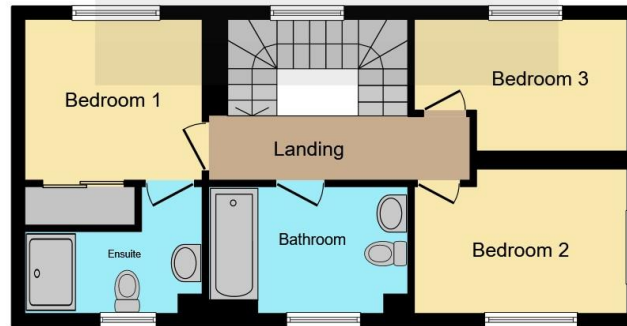








Ground Floor



First Floor

This floorplan is for illustrative purposes only and is not drawn to scale. Measurements, floor-areas, openings and orientations are approximate. They should not be relied upon for any purpose and do not form any part of an agreement. No liability is taken for any error or mis-statement. All parties must rely on their own inspections.

To view this property please contact Connells on

T 01980 622 662

E amesbury@connells.co.uk

Unit 3 23 Salisbury Street AMESBURY
SALISBURY SP4 7AW

EPC Rating: B

Tenure: Freehold

view this property online connells.co.uk/Property/ABY307815



1. MONEY LAUNDERING REGULATIONS Intending purchasers will be asked to produce identification documentation at a later stage and we would ask for your co-operation in order that there will be no delay in agreeing the sale. 2. These particulars do not constitute part or all of an offer or contract. 3. The measurements indicated are supplied for guidance only and as such must be considered incorrect. Potential buyers are advised to recheck measurements before committing to any expense. 4. We have not tested any apparatus, equipment, fixtures, fittings or services and it is in the buyers interest to check the working condition of any appliances.

Connells Residential is registered in England and Wales under company number 1489613, Registered Office is Cumbria House, 16-20 Hockliffe Street, Leighton Buzzard, Bedfordshire, LU7 1GN. VAT Registration Number is 500 2481 05.

See all our properties at www.connells.co.uk | www.rightmove.co.uk | www.zoopla.co.uk

Property Ref: ABY307815 - 0003