



Connells

Eleanor Drive
Amesbury Salisbury



Property Description

A stylish, middle of three, Bloor built house well situated within this recent development located minutes from the A303 and Salisbury. The property offers a cloakroom, two good size bedrooms and double drive.

Entrance Hall

Doors to cloakroom, lounge and kitchen, stairs to first floor landing.

Cloakroom

Comprising a WC and wash hand basin.

Lounge

13' x 12' 9" (3.96m x 3.89m)

Rear aspect with French doors to garden, built in cupboard.

Kitchen

10' 5" x 5' 7" (3.17m x 1.70m)

Comprising a single drainer sink unit with mixer taps, range of gloss wall and base units with roll top work surfaces, built in oven, inset hob unit with glass and steel hood over with downlighters, space for washing machine, space for dishwasher, fridge/freezer space, front aspect.

Landing

Bedroom One

13' x 8' (3.96m x 2.44m)

Rear aspect.

Bedroom Two

13' x 8' 2" (3.96m x 2.49m)

Size incorporates built in wardrobe, front aspect.

Bathroom

Comprising a panel enclosed bath with built in shower unit with glass screen, pedestal wash hand basin, WC, heated towel rail.

Outside

Rear Garden

Enclosed by fencing with gated rear access and patio area.

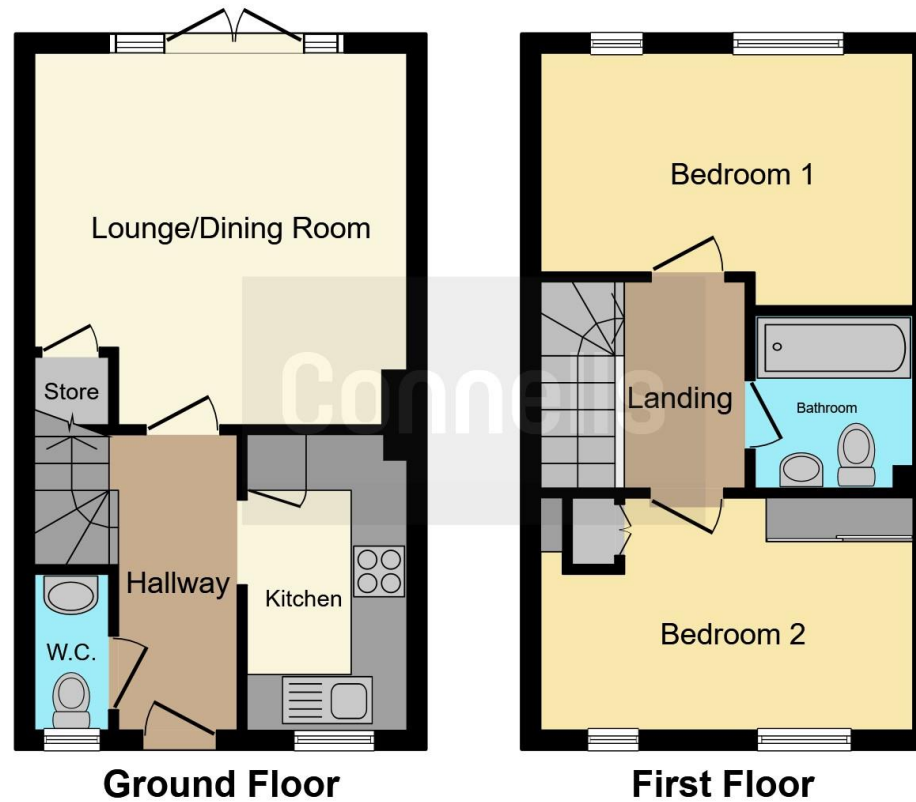
Driveway

For two cars.









This floorplan is for illustrative purposes only and is not drawn to scale. Measurements, floor-areas, openings and orientations are approximate. They should not be relied upon for any purpose and do not form any part of an agreement. No liability is taken for any error or mis-statement. All parties must rely on their own inspections.

To view this property please contact Connells on

T 01980 622 662
E amesbury@connells.co.uk

Unit 3 23 Salisbury Street AMESBURY
 SALISBURY SP4 7AW

EPC Rating: B

view this property online connells.co.uk/Property/ABY307362

Tenure: Freehold



1. MONEY LAUNDERING REGULATIONS Intending purchasers will be asked to produce identification documentation at a later stage and we would ask for your co-operation in order that there will be no delay in agreeing the sale. 2. These particulars do not constitute part or all of an offer or contract. 3. The measurements indicated are supplied for guidance only and as such must be considered incorrect. Potential buyers are advised to recheck measurements before committing to any expense. 4. We have not tested any apparatus, equipment, fixtures, fittings or services and it is in the buyers interest to check the working condition of any appliances.

Connells Residential is registered in England and Wales under company number 1489613, Registered Office is Cumbria House, 16-20 Hockliffe Street, Leighton Buzzard, Bedfordshire, LU7 1GN. VAT Registration Number is 500 2481 05.

See all our properties at www.connells.co.uk | www.rightmove.co.uk | www.zoopla.co.uk

Property Ref: ABY307362 - 0002