



Connells

Victoria Road
Wilton Salisbury

Victoria Road
Wilton Salisbury SP2 0DZ

for sale
£330,000



Property Description

A three bed semi-detached house in Victoria Road, Wilton. This picturesque village is ideally located with commuter links to historic city centre Salisbury. The property offers a garage, open plan lounge/dining, enclosed rear garden and shower room.



Entrance Hall

Stairs to landing, door to lounge/dining room, kitchen, storage cupboard and understairs storage.

Lounge/ Dining Room

Irregular Shaped Room 18' 5" x 8' 11" (5.61m x 2.72m)

Wood burner fire place with tiled hearth, large patio door to the rear garden.

Kitchen

9' 10" x 6' 8" (3.00m x 2.03m)

Comprising wall and base units, drainer sink unit with mixer taps, space for a cooker unit with hood over, space for washing machine, space for fridge/freezer, front aspect.

Landing

Bedroom One

12' 3" x 8' 11" (3.73m x 2.72m)

Rear aspect.

Bedroom Two

9' 1" x 8' 11" (2.77m x 2.72m)

Rear aspect.

Bedroom Three

11' 4" x 6' 11" (3.45m x 2.11m)

Front aspect.

Bathroom

Comprising a shower cubicle, vanity unit with inset wash hand basin with mixer taps, WC with concealed cistern and cupboards, heated towel rail.

Outside

Rear Garden

With a patio area from the rear door leading to the mostly laid to lawn area with gravel borders and a raised planter bed. Enclosed with wood panel fencing and offering a high degree of privacy with mature shrubs and small trees to the sides and rear.

Front Garden

Paved area approaching the garage.

Garage

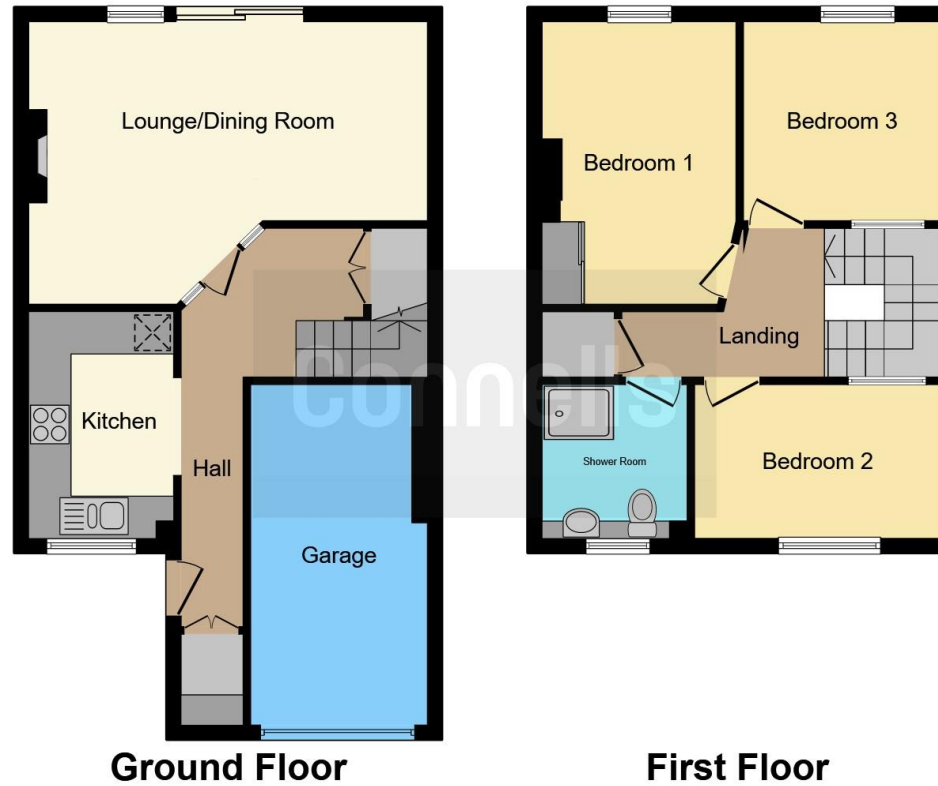
15' 11" x 8' (4.85m x 2.44m)

With up and over door, power and light.









This floor plan is for illustrative purposes only. It is not drawn to scale. Any measurements, floor areas (including any total floor area), openings and orientation are approximate. No details are guaranteed, they cannot be relied upon for any purpose and they do not form part of any agreement. No liability is taken for any error, omission or misstatement. A party must rely upon its own inspection(s). Powered by www.focalagent.com

To view this property please contact Connells on

T 01722 328 562
E salisbury@connells.co.uk

46-50 Castle Street
 Salisbury SP1 3TS

EPC Rating: D

Tenure: Freehold

view this property online connells.co.uk/Property/SAL307412



1. MONEY LAUNDERING REGULATIONS Intending purchasers will be asked to produce identification documentation at a later stage and we would ask for your co-operation in order that there will be no delay in agreeing the sale. 2. These particulars do not constitute part or all of an offer or contract. 3. The measurements indicated are supplied for guidance only and as such must be considered incorrect. Potential buyers are advised to recheck measurements before committing to any expense. 4. We have not tested any apparatus, equipment, fixtures, fittings or services and it is in the buyers interest to check the working condition of any appliances.

Connells Residential is registered in England and Wales under company number 1489613, Registered Office is Cumbria House, 16-20 Hockliffe Street, Leighton Buzzard, Bedfordshire, LU7 1GN. VAT Registration Number is 500 2481 05.

See all our properties at www.connells.co.uk | www.rightmove.co.uk | www.zoopla.co.uk

Property Ref: SAL307412 - 0004