



**Connells**

Saunders Avenue  
Bishopdown Salisbury



### Property Description

With NO ONWARD CHAIN this FREEHOLD coach house is situated in the modern development in Bishopdown. The property comprises of an open plan kitchen and living room, bedroom and bathroom. There is a garage with storage cupboard on the ground floor. Situated approximately 3 miles from the centre of the historic city of Salisbury which has a variety of shopping, entertainment and cultural facilities plus direct rail links to London Waterloo.



## Entrance Hall

Stairs to first floor landing.

## Landing

Doors to kitchen/living area, bedroom and bathroom, two storage cupboards

## Open Plan Living Area

18' 4" x 11' 3" ( 5.59m x 3.43m )

## Kitchen

Comprising wall and base units with work surfaces over, one and a half bowl stainless steel sink/drainers unit with mixer tap, built in oven, inset gas hob with extractor hood over, built in and concealed dishwasher, built in and concealed fridge/freezer, rear aspect.

## Living Area

French doors to Juliet balcony, front aspect

## Bedroom

10' 3" x 9' 1" plus recess ( 3.12m x 2.77m plus recess )

Double built in wardrobes. additional built in cupboard, front aspect.

## Bathroom

Comprising a panel enclosed bath with shower over and glass shower screen, wash hand basin, WC, heated towel rail.

## Outside

## Garage

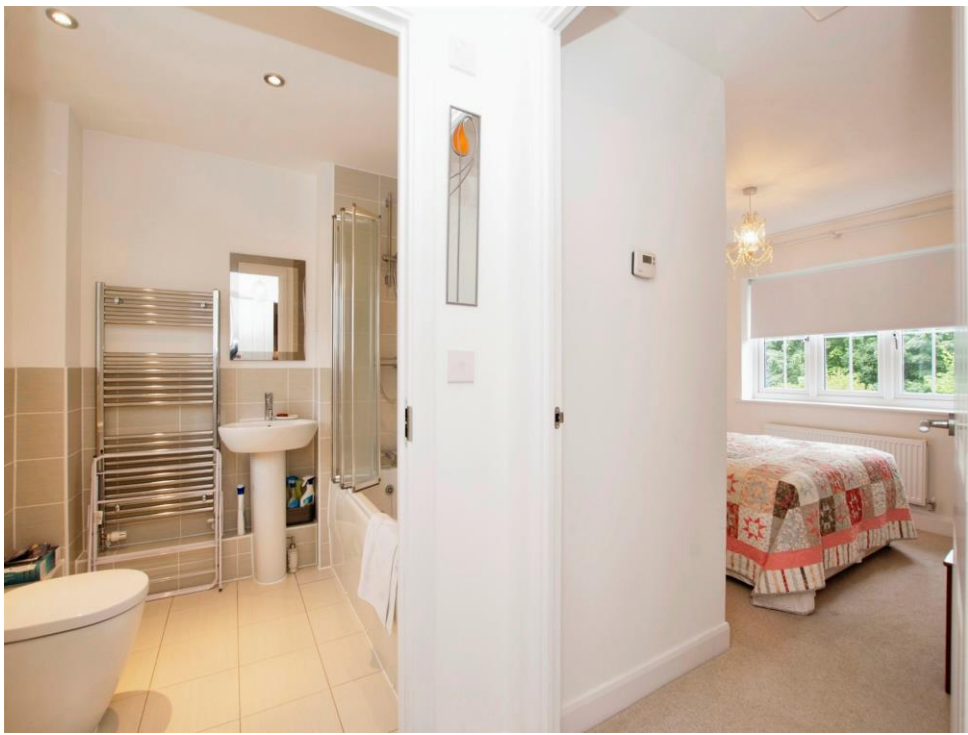
18' 7" x 11' 2" ( 5.66m x 3.40m )

Up and over door, storage cupboard.

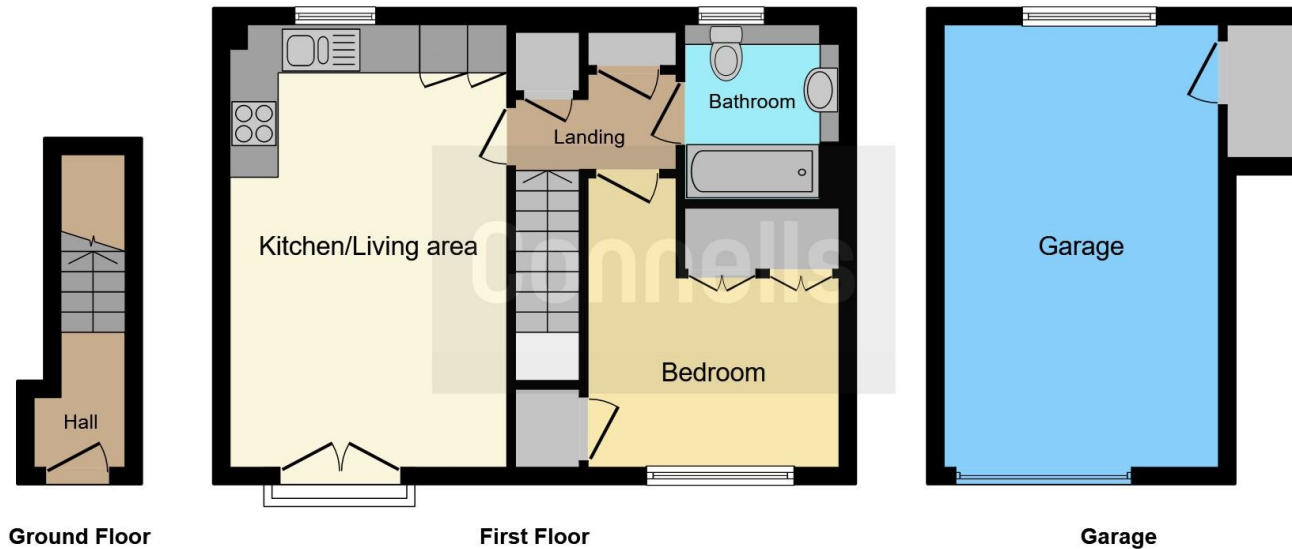
## Parking

On street parking to the rear.









This floor plan is for illustrative purposes only. It is not drawn to scale. Any measurements, floor areas (including any total floor area), openings and orientation are approximate. No details are guaranteed, they cannot be relied upon for any purpose and they do not form part of any agreement. No liability is taken for any error, omission or misstatement. A party must rely upon its own inspection(s). Powered by [www.focalagent.com](http://www.focalagent.com)

To view this property please contact Connells on

**T 01722 328 562**  
**E [salisbury@connells.co.uk](mailto:salisbury@connells.co.uk)**

46-50 Castle Street  
 Salisbury SP1 3TS

**EPC Rating: C**

Tenure: Freehold

**view this property online [connells.co.uk/Property/SAL307289](http://connells.co.uk/Property/SAL307289)**



1. MONEY LAUNDERING REGULATIONS Intending purchasers will be asked to produce identification documentation at a later stage and we would ask for your co-operation in order that there will be no delay in agreeing the sale. 2. These particulars do not constitute part or all of an offer or contract. 3. The measurements indicated are supplied for guidance only and as such must be considered incorrect. Potential buyers are advised to recheck measurements before committing to any expense. 4. We have not tested any apparatus, equipment, fixtures, fittings or services and it is in the buyers interest to check the working condition of any appliances.

Connells Residential is registered in England and Wales under company number 1489613, Registered Office is Cumbria House, 16-20 Hockliffe Street, Leighton Buzzard, Bedfordshire, LU7 1GN. VAT Registration Number is 500 2481 05.

**See all our properties at [www.connells.co.uk](http://www.connells.co.uk) | [www.rightmove.co.uk](http://www.rightmove.co.uk) | [www.zoopla.co.uk](http://www.zoopla.co.uk)**

Property Ref: SAL307289 - 0003