



Connells

Ashleigh Close
South Newton Salisbury



Property Description

Connells bring to the market this mid terraced property in Ashleigh Close, South newton, Salisbury. The property comprises on an entrance hall, kitchen diner, lounge and cloakroom on the ground floor. The first floor offers three bedrooms and a bathroom. There are front and rear gardens and the property is set in a cul-de-sac.

South Newton is approximately 6 miles from central Salisbury and is served by two bus routes into the city. The village has a number of local businesses including a farm shop and a pub.

The medieval city of Salisbury offers a range of cultural, leisure and shopping facilities plus a twice weekly market. The city has direct rail links to London Waterloo and the West Country and good road links to the New Forest and South Coast.



Entrance Hall

Doors to kitchen, lounge, and cloakroom, storage cupboard, laminate flooring, stairs to first floor.

Cloakroom

WC and hand wash basin

Lounge

15' 2" x 12' 4" max (4.62m x 3.76m max)

Window and double doors facing rear garden, two radiators. carpet flooring

Kitchen Diner

15' x 8' 5" (4.57m x 2.57m)

Fitted kitchen with dining area, double glazed window to front, radiator

Landing

Large storage cupboard

Bedroom One

11' 8" x 12' 8" (3.56m x 3.86m)

Double glazed window to front, built in wardrobes, radiator, carpet flooring

Bedroom Two

13' 4" x 9' 1" (4.06m x 2.77m)

Double glazed window to rear, built in wardrobes, radiator, carpet flooring

Bedroom Three

9' 2" x 10' (2.79m x 3.05m)

Double glazed window to rear, radiator, carpet flooring

Bathroom

6' 6" x 8' 6" (1.98m x 2.59m)

Hand wash basin, WC, bath, storage space, double glazed window to front

Front Garden

Path to front door, lawn area

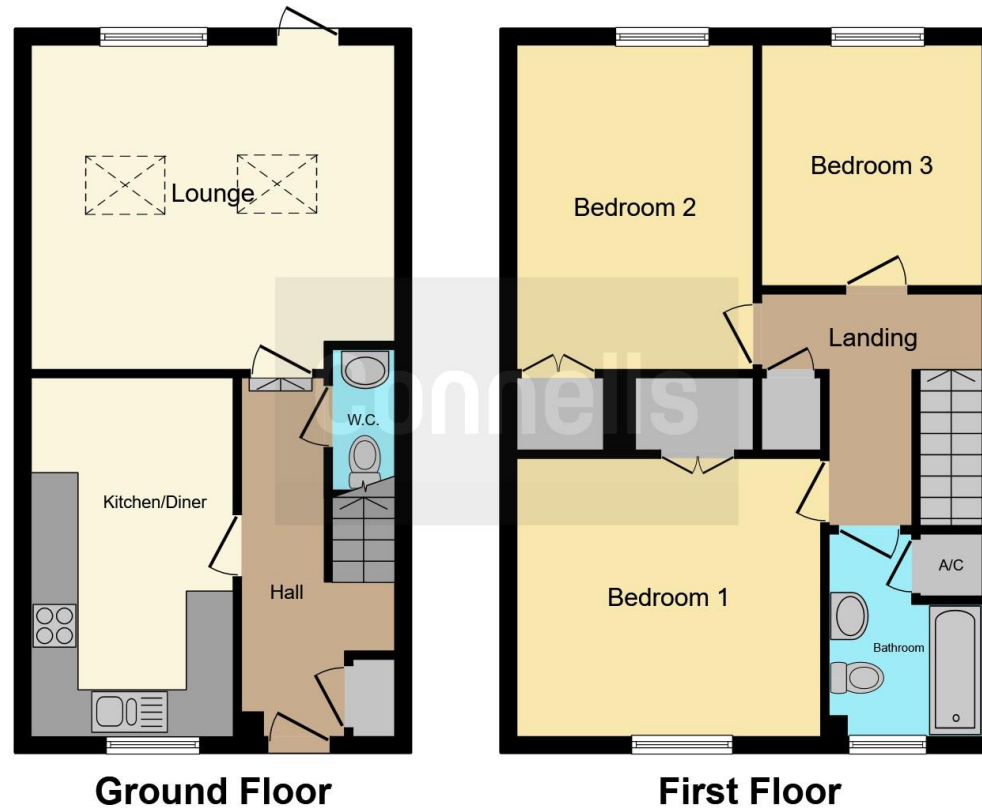
Rear Garden

Enclosed by fencing and hedges, patio area, lawn, 2 sheds, oil storage container









This floorplan is for illustrative purposes only and is not drawn to scale. Measurements, floor-areas, openings and orientations are approximate. They should not be relied upon for any purpose and do not form any part of an agreement. No liability is taken for any error or mis-statement. All parties must rely on their own inspections.

To view this property please contact Connells on

T 01722 328 562
E salisbury@connells.co.uk

46-50 Castle Street
 Salisbury SP1 3TS

EPC Rating: C

view this property online connells.co.uk/Property/SAL307045

Tenure: Freehold



1. MONEY LAUNDERING REGULATIONS Intending purchasers will be asked to produce identification documentation at a later stage and we would ask for your co-operation in order that there will be no delay in agreeing the sale. 2. These particulars do not constitute part or all of an offer or contract. 3. The measurements indicated are supplied for guidance only and as such must be considered incorrect. Potential buyers are advised to recheck measurements before committing to any expense. 4. We have not tested any apparatus, equipment, fixtures, fittings or services and it is in the buyers interest to check the working condition of any appliances.

Connells Residential is registered in England and Wales under company number 1489613, Registered Office is Cumbria House, 16-20 Hockliffe Street, Leighton Buzzard, Bedfordshire, LU7 1GN. VAT Registration Number is 500 2481 05.

See all our properties at www.connells.co.uk | www.rightmove.co.uk | www.zoopla.co.uk

Property Ref: SAL307045 - 0004