



Connells

Rollestone House Rollestone Street
Salisbury

Rollestone House Rollestone Street Salisbury SP1 1DY

for sale
£300,000



Property Description

A unique opportunity to reside in a ground-floor apartment nestled within a distinguished modern extension to the adjoining Grade II listed Georgian Building (Formerly the Salisbury Journal Offices). This charming abode boasts two bedrooms and two bathrooms, of which one is an en-suite shower room for the master bedroom. The heart of the home is an inviting open-plan kitchen and living space, seamlessly blending historic charm with contemporary comfort.

Noteworthy Features Include:

- o Historic Meets Contemporary: This property harmoniously combines historical allure with modern aesthetics, offering a distinctive living experience.

- o Comfortable Living: Enjoy electric heating for cosy living throughout. Porcelanosa Link realm floor grace the living areas and hallways, while plush luxury fitted carpets adorn the bedrooms. Underfloor heating adds a touch of luxury to the bathrooms.

- o Storage and Convenience: Benefit from private shared secure basement storage, ideal for bicycles and other belongings.

- o Grand Ceiling Heights: The apartments showcase remarkable ceiling heights, soaring up to 2.8 meters, preserving the property's historic charm.

- o Bespoke Kitchens: The kitchens are a

testament to meticulous design, featuring soft-closed doors and drawers, solid worktops, and upstands. They come fully equipped with integral appliances, including an integrated fridge freezer, washer dryers, induction hobs and extractor and dishwasher.

- o Elegant Bathrooms: Bathrooms are impeccably tiled with stylish porcelanosa tiles and feature porcelanosa sanitary ware. Thermostatic shower valves and glazed shower screens ensure your comfort and convenience.

- o Preserving Original Features: In line with the property's heritage, traditional skirting and architrave have been added, complemented by luxury internal oak doors adorned with polished chrome ironmongery.

Measurements

Kitchen/Living space - 22.9 x 12.4

Bed 1 - 9.5 x 13.1

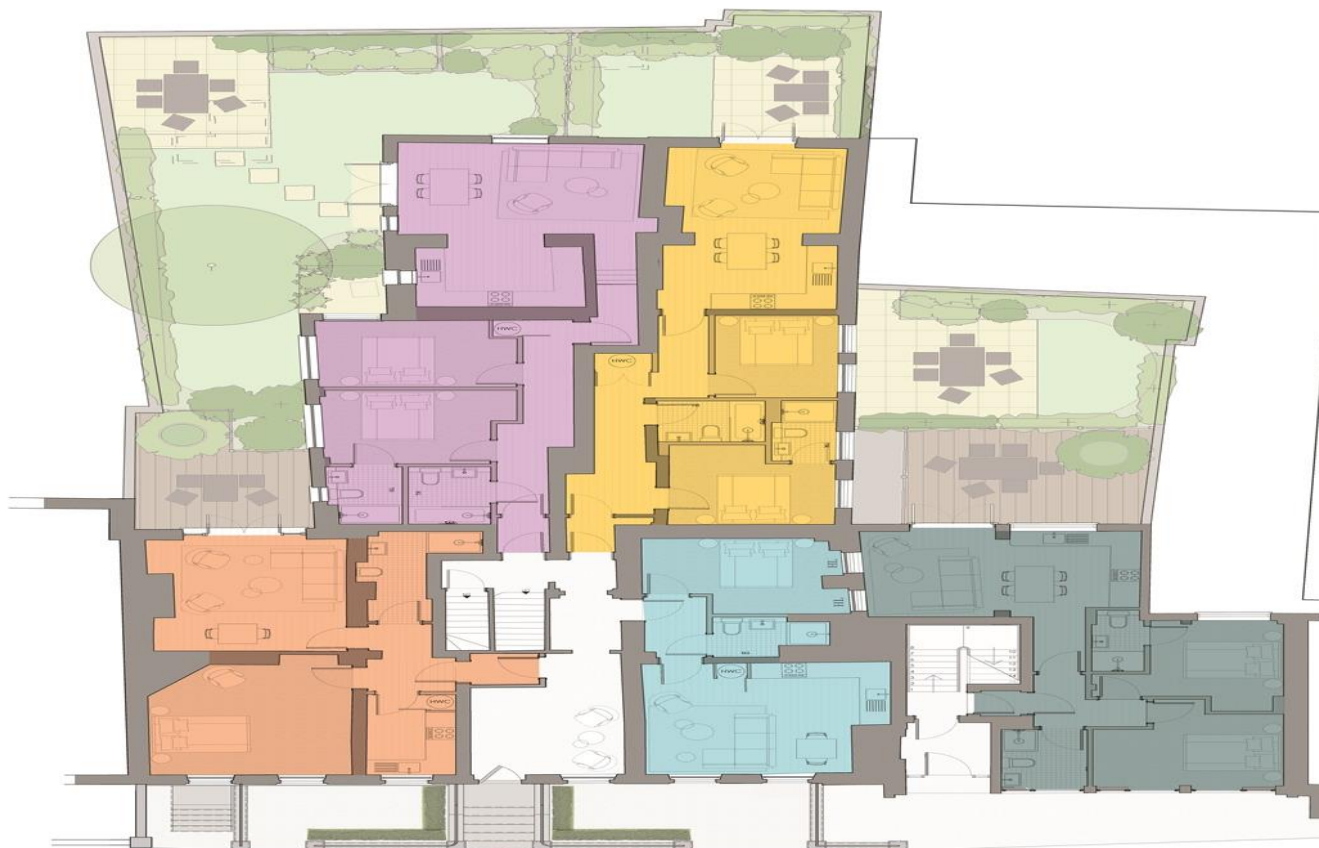
Bathroom, Fitted with shower, WC and sink

Please Note

Please note that images used may be computer generated and/or from a show-home by the developer and are meant for guidance only. Images are general of the development and may not relate to your chosen Plot - clarification should be sought from our sales team.







To view this property please contact Connells on

T 01722 328 562
E salisbury@connells.co.uk

46-50 Castle Street
 Salisbury SP1 3TS

EPC Rating:
 Exempt

Tenure: Freehold

view this property online connells.co.uk/Property/SAL306972



1. MONEY LAUNDERING REGULATIONS Intending purchasers will be asked to produce identification documentation at a later stage and we would ask for your co-operation in order that there will be no delay in agreeing the sale. 2. These particulars do not constitute part or all of an offer or contract. 3. The measurements indicated are supplied for guidance only and as such must be considered incorrect. Potential buyers are advised to recheck measurements before committing to any expense. 4. We have not tested any apparatus, equipment, fixtures, fittings or services and it is in the buyers interest to check the working condition of any appliances.

Connells Residential is registered in England and Wales under company number 1489613, Registered Office is Cumbria House, 16-20 Hockliffe Street, Leighton Buzzard, Bedfordshire, LU7 1GN. VAT Registration Number is 500 2481 05.

See all our properties at www.connells.co.uk | www.rightmove.co.uk | www.zoopla.co.uk

Property Ref: SAL306972 - 0007