



Connells

The Vale
Hythe Southampton

The Vale

Hythe Southampton SO45 5ET

for sale guide price
£330,000



Property Description

This beautifully presented property offers versatile living space with stunning sea views from the rear garden. The welcoming entrance hall features a UPVC front door, double-glazed window to the front, and coir matting, leading to a bright lounge overlooking the front garden with oak laminate flooring. The modern kitchen boasts white gloss units, granite style (laminated) work surfaces, a built-in wine rack, and glazed patio doors opening to the conservatory. The conservatory provides access to the rear garden and includes ceramic tiled flooring, a worktop with space for a washer and dryer. The master bedroom benefits from large rear-facing windows, oak laminate flooring, and a built-in wardrobe, while the second bedroom offers side-facing views, grey carpet, and built-in storage. The stylish bathroom features a white suite, rainfall shower, vanity unit, and chrome towel rail. Outside, the terraced rear garden enjoys mature borders and sea views. A garage with power, light, and internal access completes this home.

Entrance Hall

6' x 3' 7" 6 (1.83m x 1.09m 6)

Lounge

14' 3" x 12' 2" 8 (4.34m x 3.71m 8)

Bright and welcoming with oak laminate flooring, double-glazed rear windows, and views over the front garden.

Kitchen

9' 2" 9 x 7' 7" 5 (2.79m 9 x 2.31m 5)

Contemporary design with white gloss units, granite effect (laminated) work surfaces, built-in wine rack, black granite splashback, space for fridge freezer, heated towel rail, and glazed doors to conservatory.

Conservatory

12' 8" x 10' 1" 5 (3.86m x 3.07m 5)

Ceramic tiled flooring, access to rear garden, and worktop with space for washer and dryer.

Bedroom 1

11' 4" 8 x 8' 9" 6 (3.45m 8 x 2.67m 6)

Spacious with large rear-facing windows, oak laminate flooring, and built-in wardrobe.

Bedroom 2

Side-facing windows with grey carpet and built-in storage

Bathroom

Modern white suite with rainfall shower, vanity unit, mirrored cabinet, and chrome towel rail.

Rear Garden

Terraced with sea views, mature shrubs, and borders.

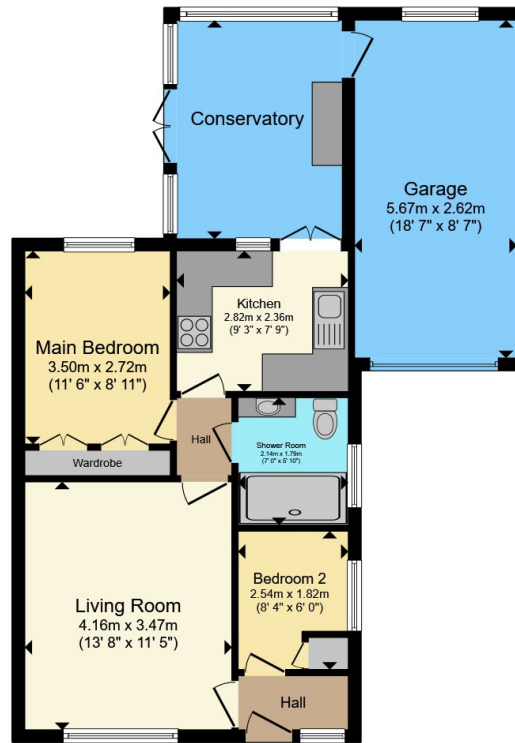
Garage

Up-and-over door, internal access, power, and lighting.









Total floor area 70.7 m² (761 sq.ft.) approx

This floor plan is for illustrative purposes only. It is not drawn to scale. Any measurements, floor areas (including any total floor area), openings and orientation are approximate. No details are guaranteed, they cannot be relied upon for any purpose and they do not form part of any agreement. No liability is taken for any error, omission or misstatement. A party must rely upon its own inspection(s). Powered by www.propertybox.io

Connells

To view this property please contact Connells on

T 01794 830 833
E romsey@connells.co.uk

13a The Hundred
 ROMSEY SO51 8GD

EPC Rating: D Council Tax
 Band: C

Tenure: Freehold

view this property online connells.co.uk/Property/ROM306907



1. MONEY LAUNDERING REGULATIONS Intending purchasers will be asked to produce identification documentation at a later stage and we would ask for your co-operation in order that there will be no delay in agreeing the sale. 2. These particulars do not constitute part or all of an offer or contract. 3. The measurements indicated are supplied for guidance only and as such must be considered incorrect. Potential buyers are advised to recheck measurements before committing to any expense. 4. We have not tested any apparatus, equipment, fixtures, fittings or services and it is in the buyers interest to check the working condition of any appliances.

Connells Residential is registered in England and Wales under company number 1489613, Registered Office is Cumbria House, 16-20 Hockliffe Street, Leighton Buzzard, Bedfordshire, LU7 1GN. VAT Registration Number is 500 2481 05.

See all our properties at www.connells.co.uk | www.rightmove.co.uk | www.zoopla.co.uk

Property Ref: ROM306907 - 0007