



Connells

Chilcott Court
North Baddesley Southampton

Chilcott Court North Baddesley Southampton SO52 9PS

for sale
£220,000



Property Description

Positioned in the popular Chilcot Court development in North Baddesley, this well-presented two-bedroom upper floor apartment is offered with no onward chain. The property is accessed via a secure communal entrance with stairs to the upper level. Inside, a private hallway leads to a bright living room with dual rear aspect windows, a modern gloss-finished kitchen with integrated appliances, and two good-sized bedrooms. The principal bedroom benefits from a built-in cupboard and en-suite shower room, while the second bedroom is served by a contemporary family bathroom. With modern décor and flooring throughout, and situated close to local amenities and transport links, this home presents an excellent opportunity for first-time buyers, downsizers, or investors.

Entrance Hall

Accessed via communal entrance hall.

Living Room

19' 9" x 15' 8" (6.02m x 4.78m)

A spacious and light-filled reception room with two rear aspect double glazed windows, creating a bright and inviting space. Finished with neutral décor and carpeted flooring, ideal for relaxing or entertaining.

Kitchen

11' x 7' (3.35m x 2.13m)

The modern kitchen enjoys a rear aspect double glazed window and a range of gloss wall, base, and drawer units. Features include a stainless steel sink with drainer, tiled flooring, an integrated double oven with gas hob, localised tiling, and space/plumbing for a dishwasher.

Bedroom One

13' 6" Max x 13' 1" Max (4.11m Max x 3.99m Max)

A well-proportioned double bedroom with carpeted flooring, rear aspect double glazed window, and the added benefit of a built-in cupboard. Access to a private en-suite shower room for added convenience.

En-Suite

Modern and practical, comprising a shower cubicle, hand wash basin, and WC. Finished in neutral tones with tiled surrounds for ease of maintenance.

Bedroom Two

11' 2" x 8' 8" (3.40m x 2.64m)

A good-sized second bedroom with a rear aspect double glazed window. Perfect for guests, a home office, or additional storage.

Bathroom

Family Bathroom

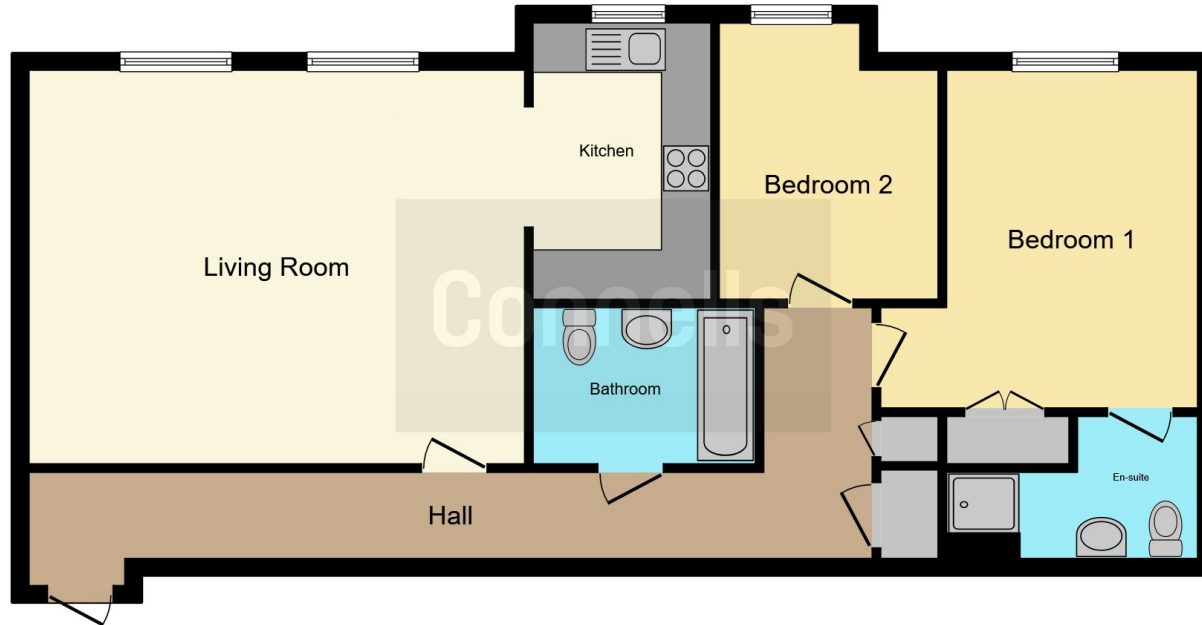
Location

Situated in the sought-after Chilcot Court development in North Baddesley, this apartment offers easy access to local shops, amenities, schools, and transport links to Romsey, Southampton, and beyond. A great residential setting for commuters or families alike.









This floor plan is for illustrative purposes only. It is not drawn to scale. Any measurements, floor areas (including any total floor area), openings and orientation are approximate. No details are guaranteed, they cannot be relied upon for any purpose and they do not form part of any agreement. No liability is taken for any error, omission or misstatement. A party must rely upon its own inspection(s). Powered by www.focalagent.com

To view this property please contact Connells on

T 01794 830 833
E romsey@connells.co.uk

13a The Hundred
 ROMSEY SO51 8GD

EPC Rating: B Council Tax
 Band: B

Service Charge: 895.00 Ground Rent:
 170.00

Tenure: Leasehold

view this property online connells.co.uk/Property/ROM306737

This is a Leasehold property with details as follows; Term of Lease 150 years from 20 Jul 2025. Should you require further information please contact the branch. Please Note additional fees could be incurred for items such as



1. MONEY LAUNDERING REGULATIONS Intending purchasers will be asked to produce identification documentation at a later stage and we would ask for your co-operation in order that there will be no delay in agreeing the sale. 2. These particulars do not constitute part or all of an offer or contract. 3. The measurements indicated are supplied for guidance only and as such must be considered incorrect. Potential buyers are advised to recheck measurements before committing to any expense. 4. We have not tested any apparatus, equipment, fixtures, fittings or services and it is in the buyers interest to check the working condition of any appliances.

Connells Residential is registered in England and Wales under company number 1489613, Registered Office is Cumbria House, 16-20 Hockliffe Street, Leighton Buzzard, Bedfordshire, LU7 1GN. VAT Registration Number is 500 2481 05.

See all our properties at www.connells.co.uk | www.rightmove.co.uk | www.zoopla.co.uk

Property Ref: ROM306737 - 0014