



**Connells**

Fyeford Close  
Rownhams Southampton



### Property Description

Discover your dream home with this inviting four-bedroom Detached House in the charming area of Rownhams. This property boasts spacious rooms designed for comfort and versatility, including a well-appointed kitchen with convenient rear access, a versatile office space, and a welcoming lounge. The elegant dining room features French doors that open to the rear garden, perfect for entertaining or enjoying serene mornings. You'll appreciate the convenience of a garage and a front garden with a driveway for easy parking. The master bedroom includes a private shower room, while the family bathroom serves the additional bedrooms. The rear garden is a blend of patio and lush lawn, complemented by mature shrubbery for added privacy.

Although the property would benefit from modernisation throughout, it offers incredible potential to make it your own. Located within walking distance to primary schools and local amenities, this home also boasts excellent commuting links and falls within the catchment area for the highly regarded Mountbatten Secondary School.

Don't miss the opportunity to transform this spacious house into your ideal family home!



## Entrance Hall

Double glazed front door opens into the entrance hall, with stairs to the upper level, access to the garage, cloakroom and reception rooms.

## Cloakroom

Double glazed window to the front aspect, WC and hand wash basin.

## Lounge

15' 4" x 10' 10" ( 4.67m x 3.30m )

A generous lounge with double glazed window to the front aspect, wood flooring and archway leading to the dining room.

## Dining Room

10' 9" x 9' 3" ( 3.28m x 2.82m )

Features French doors to the rear garden and wood flooring.

## Kitchen

11' x 12' 3" ( 3.35m x 3.73m )

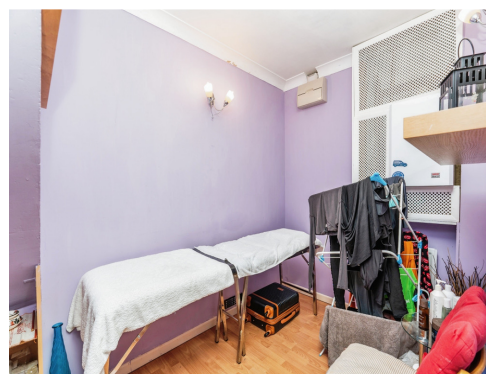
Located at the rear of the property is the fitted kitchen with space for an oven, washing machine and dishwasher. There are double glazed windows to the side and rear aspect and a door to the rear garden.

## Office

Currently in use as an office, this versatile room can be accessed from the kitchen.

## Landing

Built in storage cupboard and access to all rooms.









**EPC Rating: D**

Tenure: Freehold

**view this property online [connells.co.uk/Property/ROM305584](https://www.connells.co.uk/Property/ROM305584)**

1. MONEY LAUNDERING REGULATIONS Intending purchasers will be asked to produce identification documentation at a later stage and we would ask for your co-operation in order that there will be no delay in agreeing the sale. 2. These particulars do not constitute part or all of an offer or contract. 3. The measurements indicated are supplied for guidance only and as such must be considered incorrect. Potential buyers are advised to recheck measurements before committing to any expense. 4. We have not tested any apparatus, equipment, fixtures, fittings or services and it is in the buyers interest to check the working condition of any appliances.

Connells Residential is registered in England and Wales under company number 1489613, Registered Office is Cumbria House, 16-20 Hockliffe Street, Leighton Buzzard, Bedfordshire, LU7 1GN. VAT Registration Number is 500 2481 05.

**See all our properties at [www.connells.co.uk](https://www.connells.co.uk) | [www.rightmove.co.uk](https://www.rightmove.co.uk) | [www.zoopla.co.uk](https://www.zoopla.co.uk)**

Property Ref: ROM305584 - 0003