



Connells

Queenwood Mews Queenwood Road
Broughton Stockbridge



Property Description

This idyllic Link-Detached property is situated within the Village centre offering a rural yet convenient lifestyle. Built in 2007 and boasting an abundance of traditional features such as a slate roof, Michelmersh brick exterior, cottage style internal doors and a log burner fire.

Internally the property is well appointed with a spacious entrance hall featuring Kardean flooring, downstairs cloakroom, spacious lounge with a window to the front aspect and french doors which lead into the kitchen/dining room. The kitchen is bright and spacious and benefits from integrated appliances, granite work surfaces and enjoys views of the courtyard garden which can be accessed via french doors.

On the first floor you have three good size bedrooms, each with fitted wardrobes, an en-suite bathroom to bedroom one and a family shower room with additional storage cupboard.

Externally this stunning property has a block paved driveway with access to the garage, lawn area and paved steps to the front entrance. The courtyard garden is split level and has been lovingly kept by the current owners.

Location:

Located in the heart of the Village of Broughton which has a range of amenities including, a Village shop, Church, doctors surgery and pub.

The Town of Stockbridge is just a ten minute drive away and the train station is also just a ten minute drive away offering convenient commuting.



Entrance Hall

Spacious entry hall with access to the lounge, cloakroom and stairs to the upper level.

Cloakroom

Modern WC and hand wash basin with vanity unit.

Lounge

17' 5" x 11' 2" (5.31m x 3.40m)

The well appointed lounge has a feature wood burner with brick surround, window to the front aspect with shutters and french doors into the kitchen/dining room.

Kitchen/Dining Room

17' 9" x 9' 4" (5.41m x 2.84m)

Fitted kitchen with integrated appliances, granite work tops, space for a dining table, window and french doors to the rear aspect.

Landing

Bedroom One

19' 3" x 9' 3" (5.87m x 2.82m)

This generously sized bedroom has carpet flooring, two built in wardrobes, window to the front aspect and access to the spacious en-suite.

En-Suite

7' 8" x 7' 1" (2.34m x 2.16m)

Spacious en-suite with bath, WC, vanity unit with hand wash basin, heated towel rail and Velux window.

Bedroom Two

17' 4" x 10' 7" (5.28m x 3.23m)

A second spacious bedroom with built in wardrobes and a window to the front aspect.

Bedroom Three

13' 3" x 8' 3" (4.04m x 2.51m)

A versatile room, currently used as a home office. This room has built in storage and a window to the front aspect.

Shower Room

7' 8" x 6' 6" (2.34m x 1.98m)

Features a large shower cubicle, WC, hand wash basin with vanity unit, built in storage cupboard and a window to the rear aspect.

Outside

Front Garden

Mostly laid to lawn with block paved driveway to the garage and steps leading to the front entrance.

Courtyard Garden

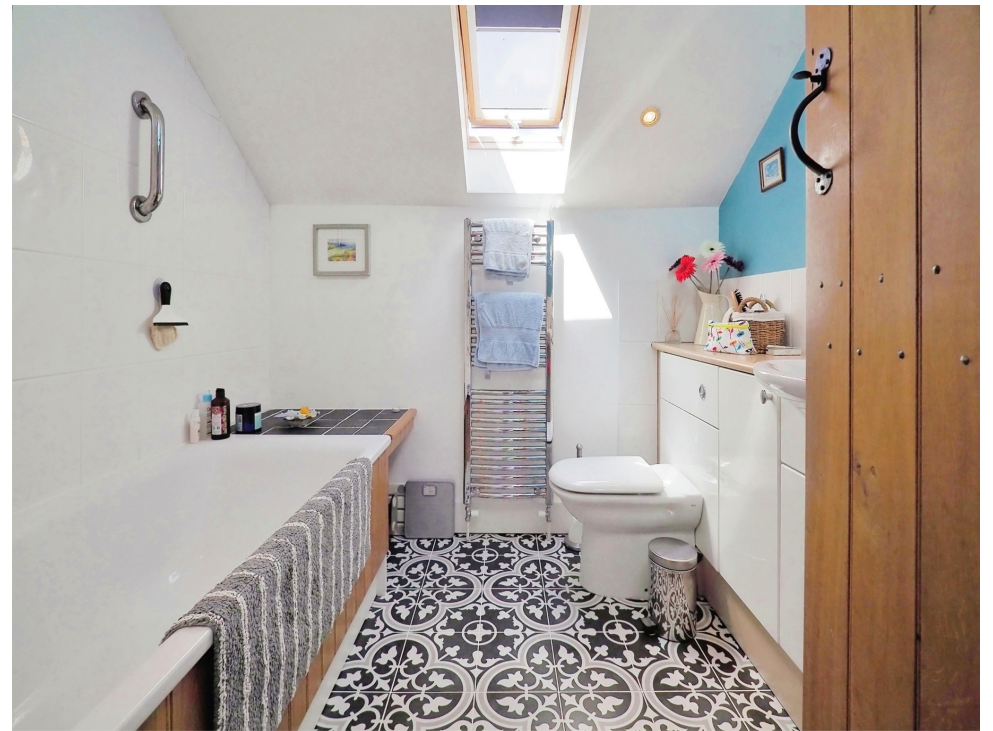
Enclosed courtyard garden with steps leading to the seating/patio area and mature foliage borders.

Garage

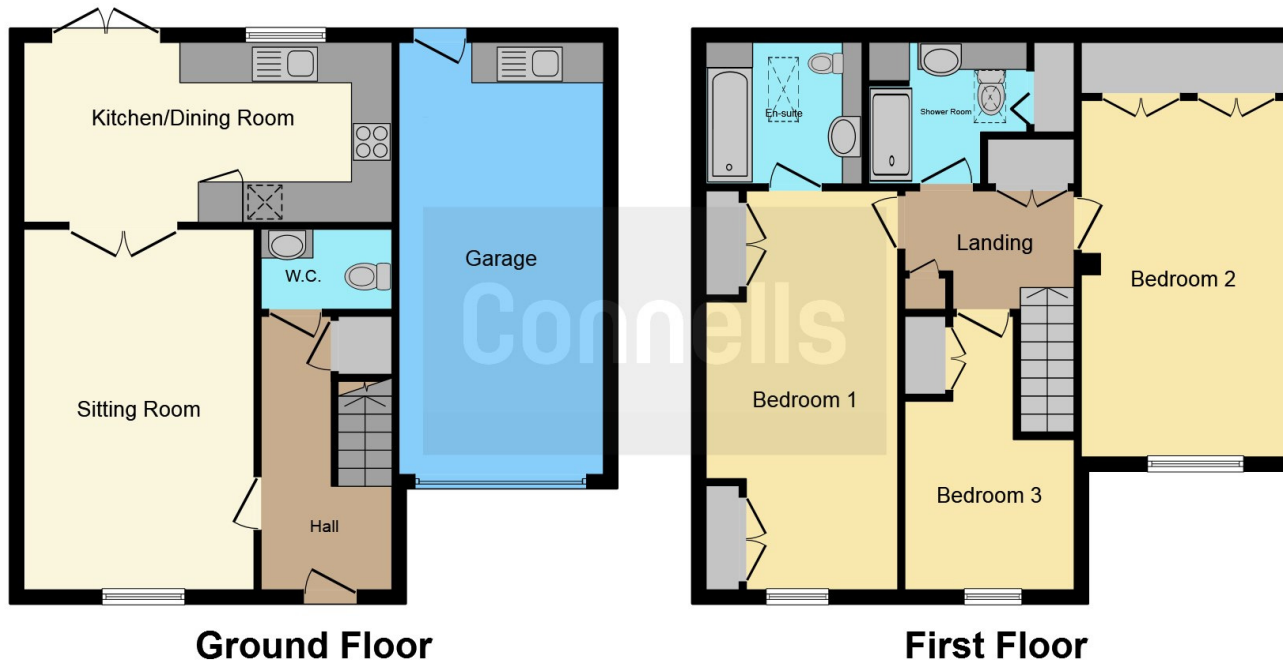
9' 9" x 20' 2" (2.97m x 6.15m)

The garage is integral to the house and features an up and over door, door accessing the rear garden and utility space including plumbing and space for washing machine and sink.









This floor plan is for illustrative purposes only. It is not drawn to scale. Any measurements, floor areas (including any total floor area), openings and orientation are approximate. No details are guaranteed, they cannot be relied upon for any purpose and they do not form part of any agreement. No liability is taken for any error, omission or misstatement. A party must rely upon its own inspection(s). Powered by www.focalagent.com

To view this property please contact Connells on

T 01794 830 833
E romsey@connells.co.uk

13a The Hundred
 ROMSEY SO51 8GD

EPC Rating: D

Tenure: Freehold

view this property online connells.co.uk/Property/ROM306232



1. MONEY LAUNDERING REGULATIONS Intending purchasers will be asked to produce identification documentation at a later stage and we would ask for your co-operation in order that there will be no delay in agreeing the sale. 2. These particulars do not constitute part or all of an offer or contract. 3. The measurements indicated are supplied for guidance only and as such must be considered incorrect. Potential buyers are advised to recheck measurements before committing to any expense. 4. We have not tested any apparatus, equipment, fixtures, fittings or services and it is in the buyers interest to check the working condition of any appliances.

Connells Residential is registered in England and Wales under company number 1489613, Registered Office is Cumbria House, 16-20 Hockliffe Street, Leighton Buzzard, Bedfordshire, LU7 1GN. VAT Registration Number is 500 2481 05.

See all our properties at www.connells.co.uk | www.rightmove.co.uk | www.zoopla.co.uk

Property Ref: ROM306232 - 0007