



Connells

Long Lane
Holbury Southampton

Long Lane
Holbury Southampton SO45 2PA

for sale offers in excess of
£450,000



Property Description

Introducing this charming three-bedroom detached chalet-style bungalow located in the picturesque Village of Holbury. This property boasts off-road parking, a rear garden perfect for outdoor relaxation, two reception rooms for entertaining guests, and a convenient en-suite bathroom attached to the primary bedroom for added privacy and comfort. In addition, there is a self contained Annexe and a single garage, plus office space which is currently being used for a small business and has electricity, water and drainage. Don't miss the opportunity to make this lovely property your new home sweet home in Holbury.



Entrance Porch

Stairs to upper level and carpet flooring.

Lounge

12' 9" x 13' 7" (3.89m x 4.14m)

Feature wood burner fire and wood flooring.

Kitchen

26' 5" x 12' 8" (8.05m x 3.86m)

A range of wall base and drawer units, space for a range style cooker, localised tiling, inset spot lighting, dining area, window to the front aspect and door to the rear garden.

Utility Room

Access to kitchen, cloakroom and door to the rear garden.

Cloakroom

Comprises, hand wash basin and WC.

Landing

Bedroom One

13' 1" x 10' 9" (3.99m x 3.28m)

Features window to the side aspect.

En-suite

7' 6" x 6' 4" (2.29m x 1.93m)

Shower room with WC and hand wash basin.

Bedroom Two

12' 6" x 11' 7" (3.81m x 3.53m)

Features window to the side aspect and built in storage.

Bedroom Three

12' 7" x 6' 4" (3.84m x 1.93m)

Features window to the rear aspect.

Bathroom

8' 9" x 6' 4" (2.67m x 1.93m)

Good size family bathroom featuring, WC, bath, shower cubicle, hand wash basin and window to the rear aspect.

Outside

Front Garden

Gated front with block paved driveway.

Rear Garden

West facing enclosed rear garden featuring, patio area, lawn area and mature shrubs and borders.

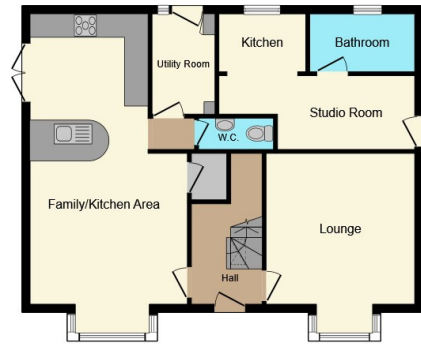
Outbuildings

Self-contained annexe with studio lounge, kitchen area and a bathroom. Perfect for family members or as a rental income or can easily be incorporated back for use by main house.

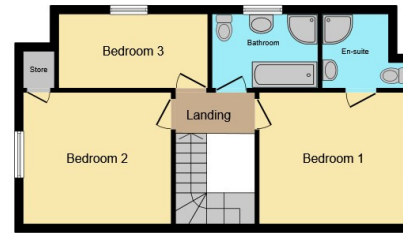




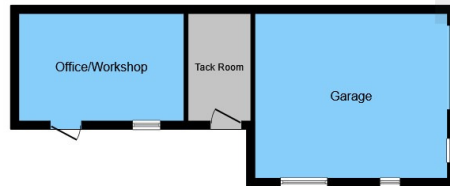




Ground Floor



First Floor



Outbuilding



This floor plan is for illustrative purposes only. It is not drawn to scale. Any measurements, floor areas (including any total floor area), openings and orientation are approximate. No details are guaranteed, they cannot be relied upon for any purpose and they do not form part of any agreement. No liability is taken for any error, omission or misstatement. A party must rely upon its own inspection(s). Powered by www.focalagent.com

To view this property please contact Connells on

T 01794 830 833
E romsey@connells.co.uk

13a The Hundred
ROMSEY SO51 8GD

EPC Rating: D

Tenure: Freehold

view this property online connells.co.uk/Property/ROM306085



1. MONEY LAUNDERING REGULATIONS Intending purchasers will be asked to produce identification documentation at a later stage and we would ask for your co-operation in order that there will be no delay in agreeing the sale. 2. These particulars do not constitute part or all of an offer or contract. 3. The measurements indicated are supplied for guidance only and as such must be considered incorrect. Potential buyers are advised to recheck measurements before committing to any expense. 4. We have not tested any apparatus, equipment, fixtures, fittings or services and it is in the buyers interest to check the working condition of any appliances.

Connells Residential is registered in England and Wales under company number 1489613, Registered Office is Cumbria House, 16-20 Hockliffe Street, Leighton Buzzard, Bedfordshire, LU7 1GN. VAT Registration Number is 500 2481 05.

See all our properties at www.connells.co.uk | www.rightmove.co.uk | www.zoopla.co.uk

Property Ref: ROM306085 - 0003