



Connells

connells.co.uk 01794 830 833

FOR SALE

Connells

Greenwood Close
Romsey



Property Description

Welcome to Greenwood Close, a charming ground-floor apartment nestled in a peaceful cul-de-sac in Romsey. This delightful one-bedroom residence boasts a separate kitchen, small garden space, and the convenience of being within walking distance to Romsey Town Centre. Overlooking a serene green, this property offers a tranquil escape while still being close to amenities.

As you step inside, you'll find a well-appointed kitchen featuring fitted wall and drawer units, roll-top work surfaces, and ample space for appliances. The cosy lounge is adorned with carpet flooring, a feature fireplace, and a built-in cupboard, providing a comfortable space to relax and unwind. The bedroom offers generous proportions, with fitted storage units and plush carpeting adding to the appeal.

The bathroom is equipped with essential amenities, including a hand-wash basin, bath, and WC, complemented by tasteful tiled walls. With one allocated car parking space and 78 years remaining on the lease, this property presents an excellent opportunity for investors, first-time buyers, or those seeking a downsized lifestyle.



Romsey Town Centre:

Romsey Town Centre epitomizes quintessential English charm, offering an array of shops, local amenities, and historic landmarks such as Romsey Abbey. Whether you're in the mood for dining out or browsing independent boutiques, you'll find plenty to explore in this vibrant locale. With restaurants, bars, cafes, and convenient transport links.

Lounge/Diner

16' 2" x 9' 1" (4.93m x 2.77m)

- Carpet flooring
- Double-glazed window to front aspect
- Feature fireplace
- Built-in cupboard for storage

Kitchen

9' 2" x 5' 8" (2.79m x 1.73m)

- Fitted kitchen with wall-based and drawer units
- Roll-top work surfaces
- Double-glazed window to front aspect
- Space and plumbing for a washing machine
- Space for a freestanding cooker
- Sink and drainer with localised tiling

Bedroom One

11' 8" x 10' 9" (3.56m x 3.28m)

- Double-bedroom
- Carpet flooring
- Fitted storage units
- Built-in cupboard

Bathroom

- Hand-wash basin
- Bath
- Localised tiled walls
- WC

Additional Details

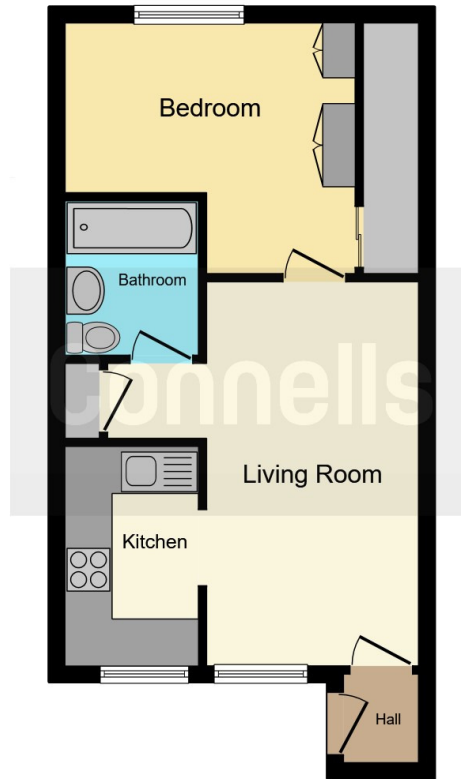
- Ground-floor apartment with separate kitchen
- Garden
- Overlooks a green
- 1 allocated car parking space
- Lease with 78 years remaining
- No chain, ideal for investment, first purchase, or downsizing







Connells
connells.co.uk 01794 630 833
FOR SALE



This floor plan is for illustrative purposes only. It is not drawn to scale. Any measurements, floor areas (including any total floor area), openings and orientation are approximate. No details are guaranteed, they cannot be relied upon for any purpose and they do not form part of any agreement. No liability is taken for any error, omission or misstatement. A party must rely upon its own inspection(s). Powered by www.focalagent.com

To view this property please contact Connells on

T 01794 830 833
E romsey@connells.co.uk

13a The Hundred
ROMSEY SO51 8GD

EPC Rating: C

Tenure: Leasehold

view this property online connells.co.uk/Property/ROM306168

This is a Leasehold property with details as follows; Term of Lease 120 years from 26 Apr 1982. Should you require further information please contact the branch. Please Note additional fees could be incurred for items such as

1. MONEY LAUNDERING REGULATIONS Intending purchasers will be asked to produce identification documentation at a later stage and we would ask for your co-operation in order that there will be no delay in agreeing the sale. 2. These particulars do not constitute part or all of an offer or contract. 3. The measurements indicated are supplied for guidance only and as such must be considered incorrect. Potential buyers are advised to recheck measurements before committing to any expense. 4. We have not tested any apparatus, equipment, fixtures, fittings or services and it is in the buyers interest to check the working condition of any appliances.

Connells Residential is registered in England and Wales under company number 1489613, Registered Office is Cumbria House, 16-20 Hockliffe Street, Leighton Buzzard, Bedfordshire, LU7 1GN. VAT Registration Number is 500 2481 05.



See all our properties at www.connells.co.uk | www.rightmove.co.uk | www.zoopla.co.uk

Property Ref: ROM306168 - 0013