



Connells
connells.co.uk 01794 830000
FOR SALE

Connells

Beacon Close
Rownhams Southampton



Property Description

Charming 2 Bedroom Semi-Detached Home with Off-Road Parking & Detached Garage in Desirable Rownhams Cul-de-Sac!. Enjoy a Tranquil West-Facing Rear Garden, Ideal for Sunsets. Nestled in Mountbatten Senior School Catchment & Conveniently Close to M27 for Easy Commutes. Perfectly Positioned Between Romsey Town Centre & Southampton City Centre. Don't Miss Out - Book Your Viewing Today!

Entrance Hall

Storage space understairs.

Lounge

11' 11" x 13' 5" (3.63m x 4.09m)

Wood laminate flooring, radiator and french doors leading to the rear garden.

Kitchen

9' x 6' (2.74m x 1.83m)

Tiled flooring, window to the front aspect, wall, base and drawer units with roll top work surfaces over, four ring gas hob, integrated electric oven, space for under counter fridge freezer and space for a washing machine.



Landing

loft access.

Bedroom One

8' x 9' 9" (2.44m x 2.97m)

Carpet flooring, fitted wardrobes, radiator and window to the rear aspect.

Bedroom Two

8' 7" x 7' 4" (2.62m x 2.24m)

Carpet flooring, built in cupboard housing the boiler and window to the front aspect.

Bathroom

Bath with shower over, hand wash basin, WC, radiator and window to the side aspect.

Outside

Front Garden

Paved pathway to the front of property.

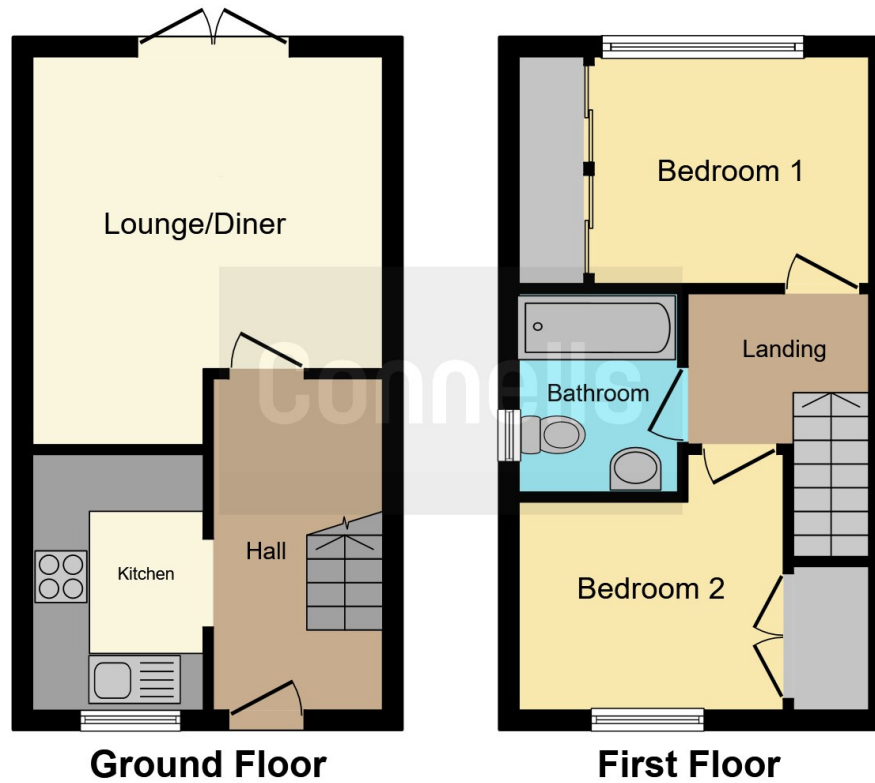
Rear Garden

East facing rear garden features; patio and lawn areas, access to garage.









This floor plan is for illustrative purposes only. It is not drawn to scale. Any measurements, floor areas (including any total floor area), openings and orientation are approximate. No details are guaranteed, they cannot be relied upon for any purpose and they do not form part of any agreement. No liability is taken for any error, omission or misstatement. A party must rely upon its own inspection(s). Powered by www.focalagent.com

To view this property please contact Connells on

T 01794 830 833
E romsey@connells.co.uk

13a The Hundred
 ROMSEY SO51 8GD

EPC Rating: C

view this property online connells.co.uk/Property/ROM306147

Tenure: Freehold



1. MONEY LAUNDERING REGULATIONS Intending purchasers will be asked to produce identification documentation at a later stage and we would ask for your co-operation in order that there will be no delay in agreeing the sale. 2. These particulars do not constitute part or all of an offer or contract. 3. The measurements indicated are supplied for guidance only and as such must be considered incorrect. Potential buyers are advised to recheck measurements before committing to any expense. 4. We have not tested any apparatus, equipment, fixtures, fittings or services and it is in the buyers interest to check the working condition of any appliances.

Connells Residential is registered in England and Wales under company number 1489613, Registered Office is Cumbria House, 16-20 Hockliffe Street, Leighton Buzzard, Bedfordshire, LU7 1GN. VAT Registration Number is 500 2481 05.

See all our properties at www.connells.co.uk | www.rightmove.co.uk | www.zoopla.co.uk

Property Ref: ROM306147 - 0008