



Connells

Escombe Road
Bishopstoke Eastleigh

Escombe Road Bishopstoke Eastleigh SO50 6FG

for sale
£335,000



Property Description

This spacious two-bedroom end-of-terrace home is situated in a sought-after location in Bishopstoke and offers driveway parking, a front garden and a garage positioned to the rear.

The property is entered via a welcoming entrance hall which leads through to a full-length lounge, featuring a window to the front, French doors opening onto the rear garden and the added benefit of a log burner, creating a cosy yet versatile living space.

The well-proportioned kitchen/diner provides ample room for dining and entertaining and gives access to a useful utility room, which in turn offers both front and rear access to the property.

To the first floor are two generous double bedrooms, both benefiting from built-in storage, along with a separate family bathroom.

Externally, the rear garden is of a good size and enjoys a patio area, lawn and access to the garage with rear access. Overall, this is a lovely home offering excellent space both inside and out, perfectly located and well worthy of viewing.

Entrance Hall

Double glazed window to front aspect. Radiator.

Lounge

Double glazed window to front aspect. French doors to rear aspect. Log burner. Radiator. TV port.

Kitchen

Double glazed window to front and rear aspect. Fitted kitchen with wall and base units. Space for appliances. Under stairs cupboard. Radiator.

Utility Room

Door to front and rear aspect. Electrics. Space for appliances.

Landing

Double glazed window to rear aspect. Loft access.



Bedroom 1

Double glazed window to front and rear aspect. Built in cupboard. Radiator.

Bedroom 2

Double glazed window to front aspect. Built in wardrobes. Airing cupboard. Radiator.

Bathroom

Double glazed window to rear aspect. Bath with shower over. Toilet. Wash hand basin. Extractor fan. Shelving. Heated towel rail.

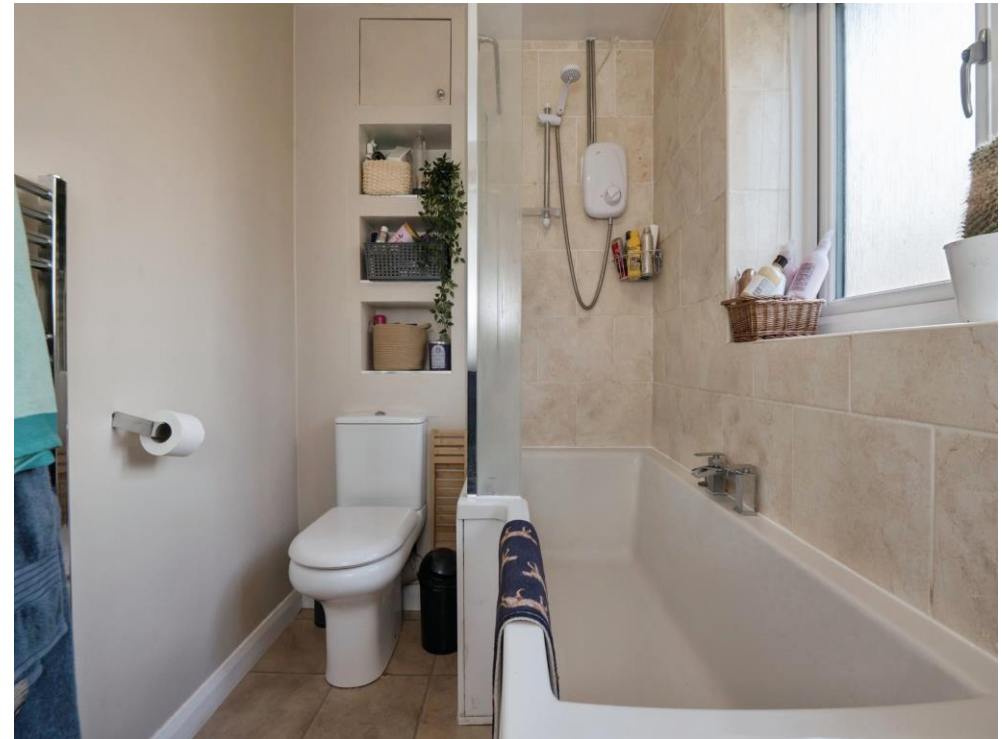
Outside

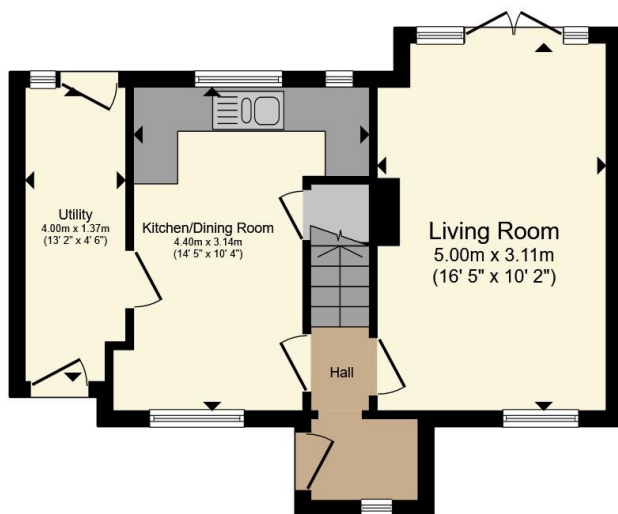
To the front. Stoned driveway. Lawn area. Steps to front door.

To the rear. Patio area. Lawn. Outside tap. Rear access. Garage.

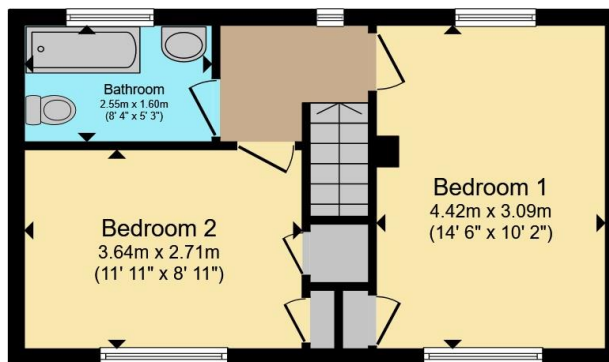
Garage

Electric roller door and door to garden.





Ground Floor



First Floor

Total floor area 72.3 m² (778 sq.ft.) approx

This floor plan is for illustrative purposes only. It is not drawn to scale. Any measurements, floor areas (including any total floor area), openings and orientation are approximate. No details are guaranteed, they cannot be relied upon for any purpose and they do not form part of any agreement. No liability is taken for any error, omission or misstatement. A party must rely upon its own inspection(s). Powered by www.propertybox.io

Connells

To view this property please contact Connells on

T 02380 618 343
E eastleigh@connells.co.uk

19 Market Street
EASTLEIGH SO50 5RH

EPC Rating: Council Tax
Awaited Band: B

view this property online connells.co.uk/Property/EGH309260

Tenure: Freehold



1. MONEY LAUNDERING REGULATIONS Intending purchasers will be asked to produce identification documentation at a later stage and we would ask for your co-operation in order that there will be no delay in agreeing the sale. 2. These particulars do not constitute part or all of an offer or contract. 3. The measurements indicated are supplied for guidance only and as such must be considered incorrect. Potential buyers are advised to recheck measurements before committing to any expense. 4. We have not tested any apparatus, equipment, fixtures, fittings or services and it is in the buyers interest to check the working condition of any appliances.

Connells Residential is registered in England and Wales under company number 1489613, Registered Office is Cumbria House, 16-20 Hockliffe Street, Leighton Buzzard, Bedfordshire, LU7 1GN. VAT Registration Number is 500 2481 05.

See all our properties at www.connells.co.uk | www.rightmove.co.uk | www.zoopla.co.uk

Property Ref: EGH309260 - 0002

