



Connells

Centaury Gardens
Horton Heath Eastleigh

Centaury Gardens Horton Heath Eastleigh SO50 7NY

for sale
£300,000



Property Description

A beautifully presented and modern two-bedroom end-terraced home, ideally situated in the sought-after area of Horton Heath. Offering a driveway and garage, this lovely property combines stylish living with practical convenience.

Upon entering, you are welcomed by a bright entrance hall that leads into a spacious lounge/diner, perfect for relaxing or entertaining.

The modern fitted kitchen boasts integral appliances and offers direct access to the rear garden.

Upstairs, the property features two generous double bedrooms, with the master bedroom benefiting from a built-in wardrobe.

The accommodation is completed by a stunning contemporary shower room, fitted with a luxurious rainfall shower.

Outside, the sizeable rear garden provides a wonderful mix of patio, stone, and lawn areas-ideal for outdoor dining and family enjoyment.

The garage, equipped with plumbing for a washing machine and offering ample storage, adds further versatility to the home.

A delightful property in a desirable location-perfect for first-time buyers, downsizers, or investors alike.

Entrance Hall

Fuse board.

Lounge

16' 3" x 11' 6" (4.95m x 3.51m)
Double glazed window to front aspect.
Radiator x2. Spotlights. Wall lights.
Tiled flooring.

Kitchen

11' 8" x 8' 2" (3.56m x 2.49m)
Double glazed window to rear aspect.
Double glazed door to garden. Modern
fitted kitchen with wall and base units.
Integral double oven. Integral electric
hob. Space for fridge freezer. Combi
boiler 2yrs old. Undermount Sink.
Spotlights.



Bedroom 1

11' 8" x 8' 7" (3.56m x 2.62m)
Double glazed window to rear aspect.
Radiator. Built in wardrobes.

Bedroom 2

12' 8" x 5' 9" (3.86m x 1.75m)
Double glazed window to rear aspect.
Radiator.

Bathroom

Double glazed window to rear aspect.
Extractor fan. Modern shower room with
rainfall shower. Vanity sink. Toilet. Fully tiled.
Spotlights. Heated towel rail. 2 years old.

Loft Space

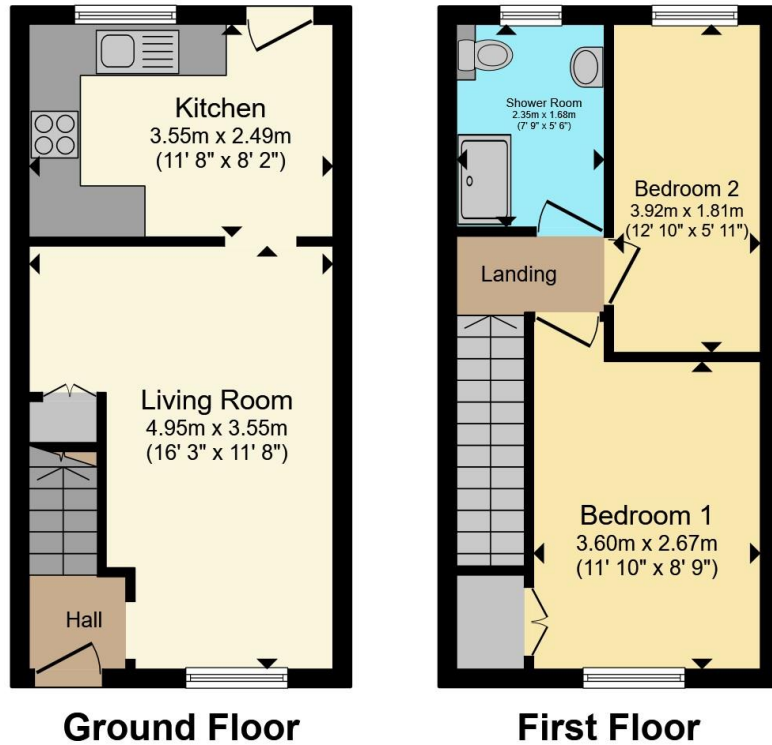
Outside

To the front. Driveway in front of garage.
Lawn area.
To the rear Patio area. Lawn area. Stoned
area. Outside lighting.

Outbuilding

17' 2" x 7' 9" (5.23m x 2.36m)
Up and over door. Plumbing for washing
machine. Electric.





Total floor area 53.5 m² (576 sq.ft.) approx

This floor plan is for illustrative purposes only. It is not drawn to scale. Any measurements, floor areas (including any total floor area), openings and orientation are approximate. No details are guaranteed, they cannot be relied upon for any purpose and they do not form part of any agreement. No liability is taken for any error, omission or misstatement. A party must rely upon its own inspection(s). Powered by www.propertybox.io

Connells



To view this property please contact Connells on

T 02380 618 343
E eastleigh@connells.co.uk

19 Market Street
 EASTLEIGH SO50 5RH

EPC Rating: C Council Tax
 Band: C

view this property online connells.co.uk/Property/EGH309427

Tenure: Freehold



1. MONEY LAUNDERING REGULATIONS Intending purchasers will be asked to produce identification documentation at a later stage and we would ask for your co-operation in order that there will be no delay in agreeing the sale. 2. These particulars do not constitute part or all of an offer or contract. 3. The measurements indicated are supplied for guidance only and as such must be considered incorrect. Potential buyers are advised to recheck measurements before committing to any expense. 4. We have not tested any apparatus, equipment, fixtures, fittings or services and it is in the buyers interest to check the working condition of any appliances.

Connells Residential is registered in England and Wales under company number 1489613, Registered Office is Cumbria House, 16-20 Hockliffe Street, Leighton Buzzard, Bedfordshire, LU7 1GN. VAT Registration Number is 500 2481 05.

See all our properties at www.connells.co.uk | www.rightmove.co.uk | www.zoopla.co.uk

Property Ref: EGH309427 - 0002