



Connells

Launceston Drive
Eastleigh



Property Description

Nestled in a quiet residential area of Eastleigh, this charming three-bedroom semi-detached home is ideal for families and first-time buyers alike.

Conveniently positioned with a lay-by parking space to the front and a garage to the rear, this lovely property offers both comfort and practicality.

Inside, you'll find a spacious lounge/diner featuring a cosy electric fireplace and patio doors that open into a bright conservatory - the perfect spot to relax while overlooking the rear garden.

The well-maintained fitted kitchen provides ample workspace and storage, catering to everyday family life.

Upstairs, there are three well-proportioned bedrooms along with a modern shower room.

Outside, the rear garden enjoys a patio area, is mainly laid to lawn, and benefits from both rear and side access.

Ideally located within walking distance of Eastleigh town centre, excellent travel links, and sought-after local schools including Crestwood, this delightful home offers a wonderful opportunity to settle in a popular, well-connected location.

Entrance Hall

PVC door to front aspect. Telephone port. Radiator.

Lounge Diner

16' 9" max x 14' 3" max (5.11m max x 4.34m max)

Double glazed window to rear aspect. Double glazed sliding door to conservatory. Electric fireplace. TV and telephone port. Built in cupboard downstairs.

Kitchen

10' 7" x 6' 3" (3.23m x 1.91m)

Double glazed window to front aspect. Fitted kitchen with wall and base units. Space for gas cooker, fridge freezer, washing machine and slim line dishwasher. Stainless steel sink and drainer set into worktop.

Conservatory

8' 1" x 5' 6" (2.46m x 1.68m)

Double glazed window to side and rear aspect. Double glazed door to garden.

Landing

Stairs from hallway up to landing. Loft access. Built in cupboard housing combi boiler.

Bedroom 1

11' 3" max x 10' 9" max (3.43m max x 3.28m max)

Double glazed window to front aspect.
Radiator. Telephone port.

Bedroom 2

11' 2" x 10' 9" max (3.40m x 3.28m max)

Double glazed window to rear aspect.
Radiator.

Bedroom 3

7' 7" x 6' 7" (2.31m x 2.01m)

Double glazed window to rear aspect.
Radiator.

Bathroom

Double glazed window to rear. Radiator. Walk in shower with glass shower screen, Wash hand basin. Toilet. Radiator. Shaving port. Part tiled.

Outside

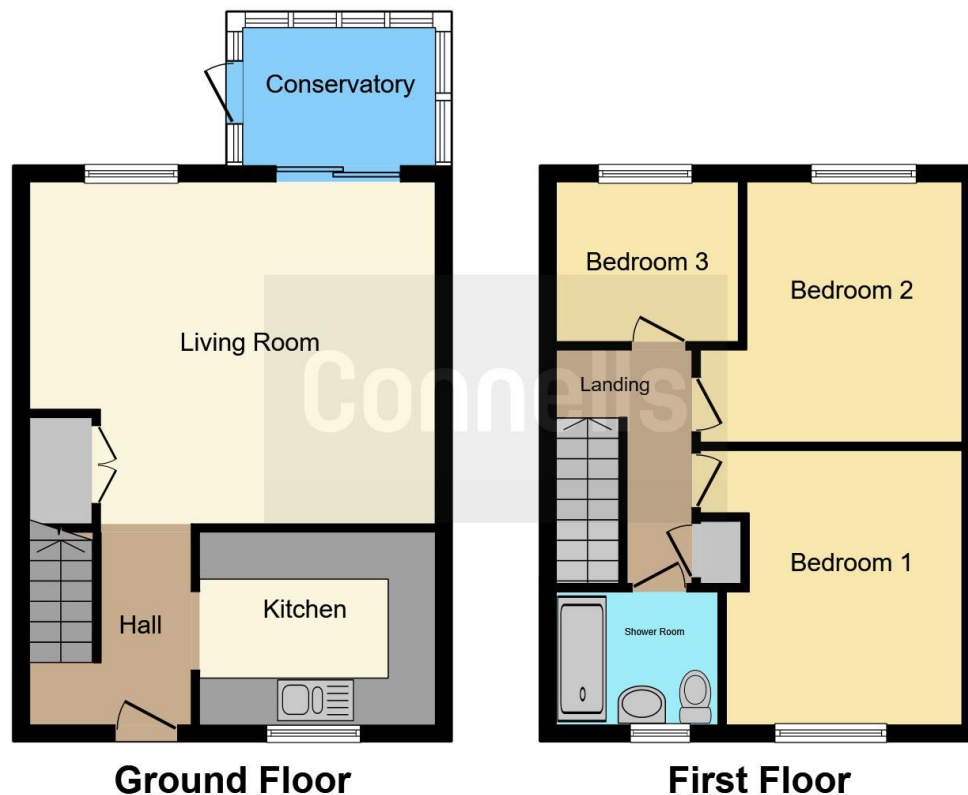
To the front. Front garden with path and lawn. On road parking however there is parking in front of garage.

To the rear. Side and rear gate. Patio area. Garden mainly laid to lawn.

Garage

Up and over door.





This floor plan is for illustrative purposes only. It is not drawn to scale. Any measurements, floor areas (including any total floor area), openings and orientation are approximate. No details are guaranteed, they cannot be relied upon for any purpose and they do not form part of any agreement. No liability is taken for any error, omission or misstatement. A party must rely upon its own inspection(s). Powered by www.focalagent.com

To view this property please contact Connells on

T 02380 618 343
E eastleigh@connells.co.uk

19 Market Street
 EASTLEIGH SO50 5RH

EPC Rating: Awaited
 Council Tax Band: C

view this property online connells.co.uk/Property/EGH309091



Tenure: Freehold



1. MONEY LAUNDERING REGULATIONS Intending purchasers will be asked to produce identification documentation at a later stage and we would ask for your co-operation in order that there will be no delay in agreeing the sale. 2. These particulars do not constitute part or all of an offer or contract. 3. The measurements indicated are supplied for guidance only and as such must be considered incorrect. Potential buyers are advised to recheck measurements before committing to any expense. 4. We have not tested any apparatus, equipment, fixtures, fittings or services and it is in the buyers interest to check the working condition of any appliances.

Connells Residential is registered in England and Wales under company number 1489613, Registered Office is Cumbria House, 16-20 Hockliffe Street, Leighton Buzzard, Bedfordshire, LU7 1GN. VAT Registration Number is 500 2481 05.

See all our properties at www.connells.co.uk | www.rightmove.co.uk | www.zoopla.co.uk

Property Ref: EGH309091 - 0003