



Connells

Mottisfont Road
Eastleigh



Property Description

Situated in the ever-popular location of Boyatt Wood, this charming three bedroom semi-detached house has been lovingly maintained and offers the perfect blend of modern living and family-friendly space.

The ground floor features a spacious, light-filled lounge, leading through to a stunning contemporary kitchen complete with integral appliances, a stylish breakfast bar, and ample room for dining and entertaining.

Upstairs, you'll find three generously sized bedrooms, ideal for growing families or those working from home, along with a well-appointed family bathroom.

The property benefits from double glazing and gas central heating throughout, ensuring year-round comfort.

Outside, the private rear garden offers a welcoming patio area, lawn, and handy rear access leading directly to two off-road parking spaces.

Perfectly positioned, this lovely home is just a short drive to Eastleigh town centre, with its variety of shops, restaurants, cinema, and bowling complex. The area also boasts excellent transport links, including Eastleigh and Southampton Airport Parkway train stations, the M27 and M3 motorways, and Southampton Airport.

Families will appreciate the excellent school and college catchment areas, along with the nearby Lakeside Country Park, leisure centre, and other local amenities.

This is a wonderful opportunity to secure a well-presented home in a sought-after location - ideal for families, first-time buyers, or those looking to upsize.

Entrance Hall

PVC front door. Built in cupboard. Radiator.

Lounge

13' 8" max x 10' 8" max (4.17m max x 3.25m max)

Double glazed window to front of aspect. TV and telephone port. Radiator.

Kitchen Diner

17' 7" x 9' 4" max (5.36m x 2.84m max)

Stunning kitchen which has been upgraded by the current owners. Double glazed window to rear of aspect and double glazed door. Fitted kitchen with wall and base units. Integral appliances such as fridge, separate freezer, washing machine and dishwasher. Sink and drainer is set into marble look worktop with a white tiles splash back. Fitted gas hob with electric oven and ext hood. Integral zanussi Microwave. New boiler is found within cupboard. Fitted breakfast bar. Radiator.

Landing

Stairs from hallway. Stairs to first floor landing. Loft access. Built in airing cupboard. Built in cupboard over stairs.

Bedroom 1

14' 7" max x 11' 2" max (4.45m max x 3.40m max)
Double glazed window to front of aspect.
Radiator. TV port.

Bedroom 2

8' 9" x 8' 6" (2.67m x 2.59m)
Double glazed window to rear of aspect.
Radiator. TV port.

Bedroom 3

9' x 6' 9" (2.74m x 2.06m)
Double glazed window to front of aspect. Built in wardrobe. Radiator.

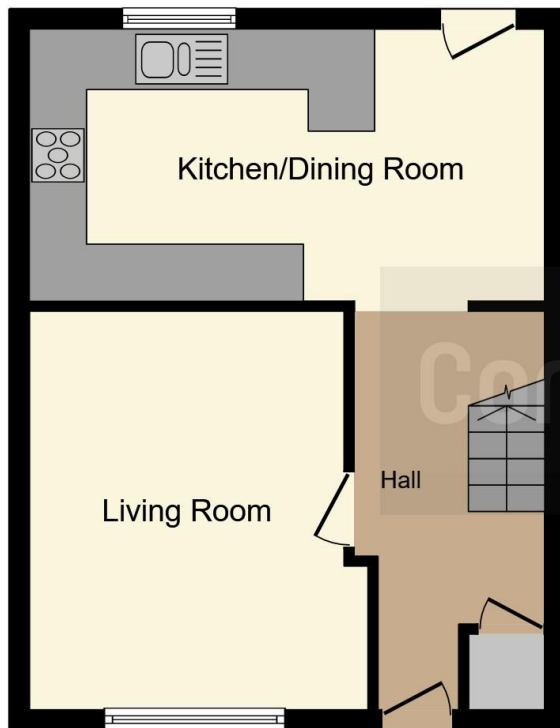
Bathroom

Double glazed window to rear of aspect.
Electric shower over bath. WC. Wash hand basin. Radiator. Part tiled.

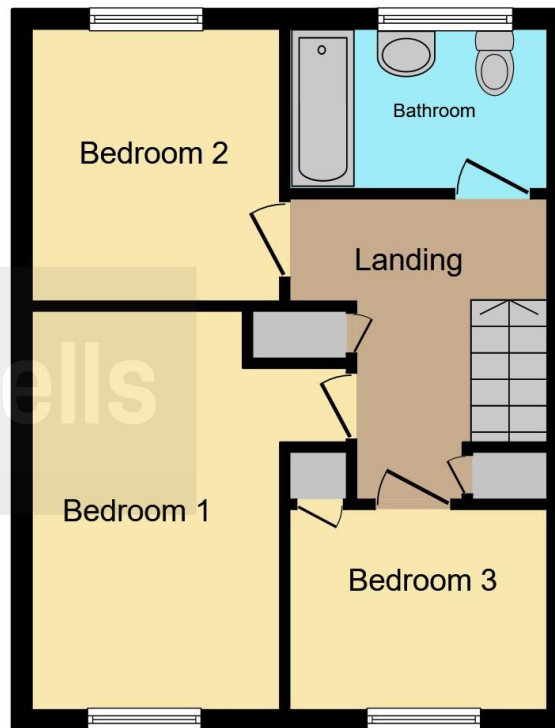
Outside

Rear garden with patio and lawn. Rear access which leads to two off road parking spaces.





Ground Floor



First Floor

This floor plan is for illustrative purposes only. It is not drawn to scale. Any measurements, floor areas (including any total floor area), openings and orientation are approximate. No details are guaranteed, they cannot be relied upon for any purpose and they do not form part of any agreement. No liability is taken for any error, omission or misstatement. A party must rely upon its own inspection(s). Powered by www.focalagent.com

To view this property please contact Connells on

T 02380 618 343
E eastleigh@connells.co.uk

19 Market Street
 EASTLEIGH SO50 5RH

EPC Rating: C Council Tax
 Band: C

view this property online connells.co.uk/Property/EGH309067



Tenure: Freehold



1. MONEY LAUNDERING REGULATIONS Intending purchasers will be asked to produce identification documentation at a later stage and we would ask for your co-operation in order that there will be no delay in agreeing the sale. 2. These particulars do not constitute part or all of an offer or contract. 3. The measurements indicated are supplied for guidance only and as such must be considered incorrect. Potential buyers are advised to recheck measurements before committing to any expense. 4. We have not tested any apparatus, equipment, fixtures, fittings or services and it is in the buyers interest to check the working condition of any appliances.

Connells Residential is registered in England and Wales under company number 1489613, Registered Office is Cumbria House, 16-20 Hockliffe Street, Leighton Buzzard, Bedfordshire, LU7 1GN. VAT Registration Number is 500 2481 05.

See all our properties at www.connells.co.uk | www.rightmove.co.uk | www.zoopla.co.uk

Property Ref: EGH309067 - 0003