



Connells

Hut Farm Place
Chandler's Ford Eastleigh

Hut Farm Place Chandler's Ford Eastleigh SO53 3LR

for sale offers in excess of
£215,000



Property Description

Situated in a sought-after area of Chandler's Ford, this well-presented two-bedroom ground floor flat offers generous living space and modern comforts.

The heart of the home is a bright and airy open-plan kitchen, lounge, and dining area, featuring an integral oven and stylish units. French doors from the lounge provide direct access to the beautiful communal gardens, creating a seamless indoor-outdoor feel.

Both bedrooms are spacious and well-proportioned, with the master benefiting from a private en-suite.

A further modern bathroom serves the rest of the home, offering both style and practicality.

Additional features include allocated parking and access to well-maintained communal gardens. Conveniently located close to local amenities, excellent travel links, and popular schools, this fantastic home is ideal for first-time buyers, downsizers, or investors.

Don't miss out and schedule a viewing today!

Entrance Hall

Intercom. Radiator. Spacious. Storage cupboard housing meters.

Kitchen Lounge Diner

21' 6" x 13' 5" (6.55m x 4.09m)
Open Plan. French doors to communal garden. 2x double glazed windows to rear aspect. Radiator x2. Fitted kitchen with wall and base units. Integral oven, hob and extractor fan. Space for fridge freezer, washing machine and dishwasher. Wood effect lino flooring. TV port & Internet port. Boiler.



Bedroom 1

12' 7" x 9' 5" (3.84m x 2.87m)

Double glazed window to side aspect. Built in wardrobes. Wood effect lino flooring. Radiator.

En-Suite

Shower cubicle. Wash hand basin. Toilet. Radiator. Towel rail. Wood effect lino flooring. Wall cabinet.

Bedroom 2

12' 7" x 8' 4" (3.84m x 2.54m)

Double glazed window to side aspect. Radiator. Wood effect lino flooring.

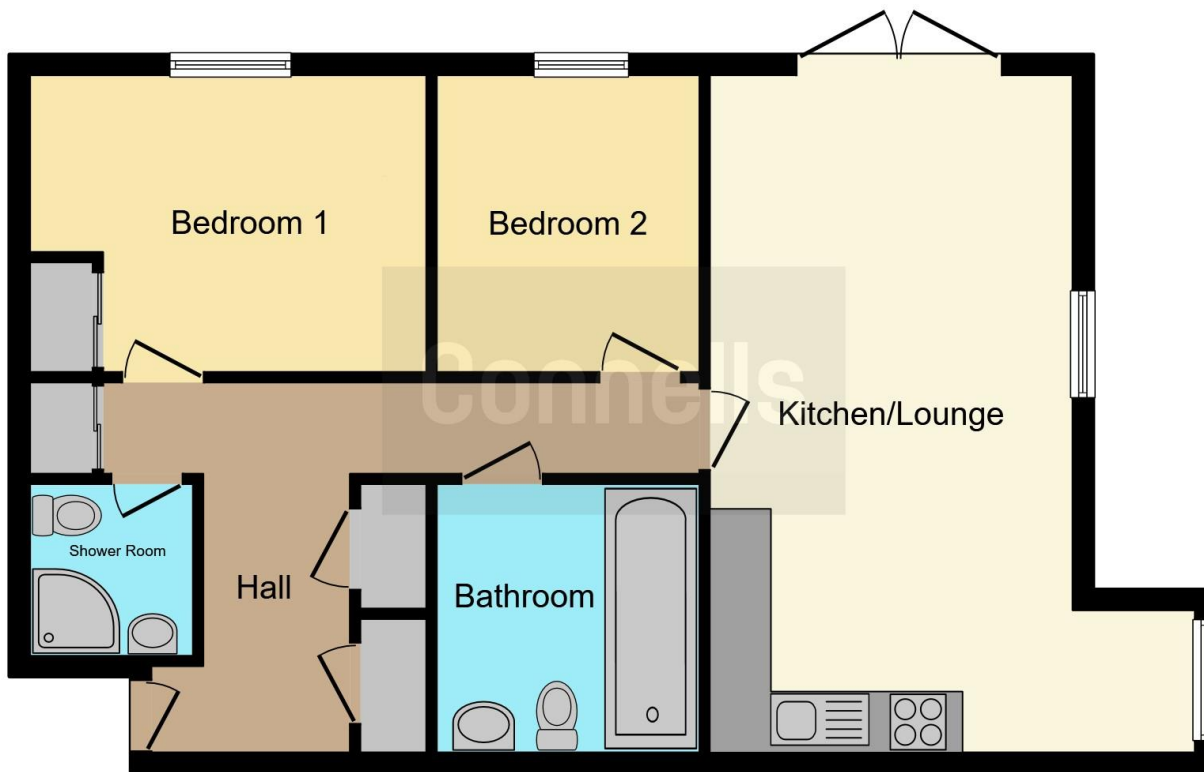
Bathroom

Shower over bath. Toilet. Wash hand basin. Radiator. Extractor fan. Wood effect lino flooring. Wall cabinet.

Outside

Allocated parking space. Communal gardens & playpark.





This floor plan is for illustrative purposes only. It is not drawn to scale. Any measurements, floor areas (including any total floor area), openings and orientation are approximate. No details are guaranteed, they cannot be relied upon for any purpose and they do not form part of any agreement. No liability is taken for any error, omission or misstatement. A party must rely upon its own inspection(s). Powered by www.focalagent.com

To view this property please contact Connells on

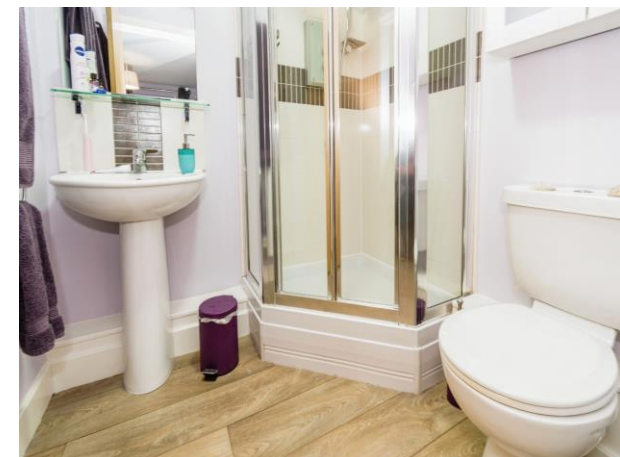
T 02380 618 343
E eastleigh@connells.co.uk

19 Market Street
 EASTLEIGH SO50 5RH

EPC Rating: C

view this property online connells.co.uk/Property/EGH308920

This is a Leasehold property with details as follows; Term of Lease 125 years from 01 Jan 2008. Should you require further information please contact the branch. Please Note additional fees could be incurred for items such as Leasehold packs.



Tenure: Leasehold



1. MONEY LAUNDERING REGULATIONS Intending purchasers will be asked to produce identification documentation at a later stage and we would ask for your co-operation in order that there will be no delay in agreeing the sale. 2. These particulars do not constitute part or all of an offer or contract. 3. The measurements indicated are supplied for guidance only and as such must be considered incorrect. Potential buyers are advised to recheck measurements before committing to any expense. 4. We have not tested any apparatus, equipment, fixtures, fittings or services and it is in the buyers interest to check the working condition of any appliances.

Connells Residential is registered in England and Wales under company number 1489613, Registered Office is Cumbria House, 16-20 Hockliffe Street, Leighton Buzzard, Bedfordshire, LU7 1GN. VAT Registration Number is 500 2481 05.

See all our properties at www.connells.co.uk | www.rightmove.co.uk | www.zoopla.co.uk

Property Ref: EGH308920 - 0006