



**Connells**

Tamin Court Bournemouth Road  
Chandler's Ford Eastleigh



### Property Description

Welcome to your new home in Chandlers Ford! This charming ground floor maisonette flat boasts a private entrance leading into a warm and inviting hallway complete with ample storage.

The generously sized lounge diner provides the perfect space for relaxation and entertaining, while the fitted kitchen offers convenience and functionality.

Two double bedrooms, including one with built-in wardrobes, ensure comfort and versatility.

The bathroom features a refreshing shower.

With allocated parking and situated in a fantastic location, this home offers both convenience and comfort for modern living.

heater. Laminate flooring.

### Bathroom

Double glazed window to side aspect. WC. Wash hand basin. Shower cubicle. Heated towel rail. Extractor fan.

### Outside

Allocated parking space for one vehicle. Small artificial grass area.

### Entrance Porch

Own front door entrance.

### Entrance Hall

Airing cupboard, Electric heater. Storage cupboard, Laminate floors.

### Lounge Diner

15' 4" x 10' 7" ( 4.67m x 3.23m )

Double glazed window to side aspect. TV port. Electric heater. Carpet.

### Kitchen

Kitchen. Double glazed window to side aspect. Fitted kitchen with wall and base units. Integral oven, hob and extractor fan. Space for washing machine and fridge freezer.

### Bedroom 1

11' 11" x 8' 1" ( 3.63m x 2.46m )

Double glazed window to side aspect. Built in wardrobe. Laminate flooring. Electric heater.

### Bedroom 2

10' 9" x 8' 1" ( 3.28m x 2.46m )

Double glazed window to side aspect. Electric





This floor plan is for illustrative purposes only. It is not drawn to scale. Any measurements, floor areas (including any total floor area), openings and orientation are approximate. No details are guaranteed, they cannot be relied upon for any purpose and they do not form part of any agreement. No liability is taken for any error, omission or misstatement. A party must rely upon its own inspection(s). Powered by [www.focalagent.com](http://www.focalagent.com)

To view this property please contact Connells on

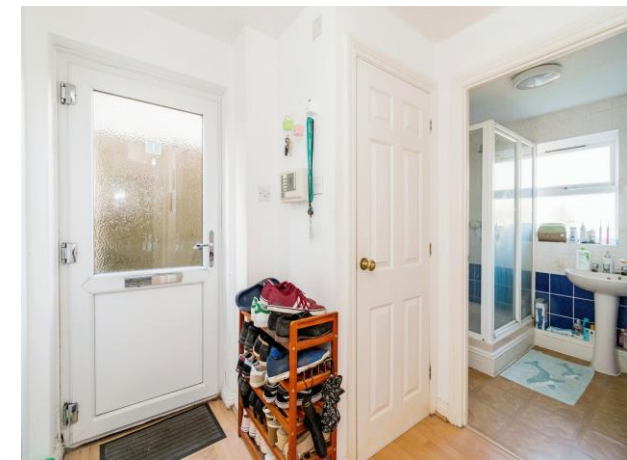
**T 02380 618 343**  
**E [eastleigh@connells.co.uk](mailto:eastleigh@connells.co.uk)**

19 Market Street  
 EASTLEIGH SO50 5RH

**EPC Rating: D**

**view this property online [connells.co.uk/Property/EGH308401](http://connells.co.uk/Property/EGH308401)**

This is a Leasehold property with details as follows; Term of Lease 125 years from 29 Sep 1995. Should you require further information please contact the branch. Please Note additional fees could be incurred for items such as Leasehold packs.



Tenure: Leasehold



1. MONEY LAUNDERING REGULATIONS Intending purchasers will be asked to produce identification documentation at a later stage and we would ask for your co-operation in order that there will be no delay in agreeing the sale. 2. These particulars do not constitute part or all of an offer or contract. 3. The measurements indicated are supplied for guidance only and as such must be considered incorrect. Potential buyers are advised to recheck measurements before committing to any expense. 4. We have not tested any apparatus, equipment, fixtures, fittings or services and it is in the buyers interest to check the working condition of any appliances.

Connells Residential is registered in England and Wales under company number 1489613, Registered Office is Cumbria House, 16-20 Hockliffe Street, Leighton Buzzard, Bedfordshire, LU7 1GN. VAT Registration Number is 500 2481 05.

**See all our properties at [www.connells.co.uk](http://www.connells.co.uk) | [www.rightmove.co.uk](http://www.rightmove.co.uk) | [www.zoopla.co.uk](http://www.zoopla.co.uk)**

Property Ref: EGH308401 - 0004