



Connells

Chiltern Crescent
Fair Oak Eastleigh



Property Description

Welcome to this contemporary two bedroom semi-detached house in the heart of Fair Oak. Discover a welcoming home featuring a spacious lounge with under-stair storage, a generously sized kitchen diner complete with integral appliances and patio doors which seamlessly connects the indoor space to a charming garden, perfect for relaxing and entertaining.

A convenient downstairs cloakroom adds practicality.

Upstairs, two double bedrooms await, with the master bedroom boasting an en-suite for added comfort. The separate family bathroom caters to both bedrooms.

Outside a well-maintained garden with shed and side access provides additional convenience. Enjoy the front garden with its lawn and pathway, accompanied by two allocated parking spaces on the road.

Embrace modern living in this thoughtfully designed residence.

Entrance Hall

PVC front door. Stairs leading to first floor.

Lounge

14' 8" max x 12' 1" max (4.47m max x 3.68m max)

Double glazed window to front of aspect. Radiator, TV & telephone port. Built in storage under stairs.

Kitchen Diner

15' 6" max x 12' 2" max (4.72m max x 3.71m max)

Double glazed window to rear of aspect. Double glazed patio doors to garden. Fitted modern kitchen with wall and base units. Fitted electric hob. Integral electric oven. Integral fridge and separate freezer. Dishwasher. Radiator. Space for washing machine. Boiler on the wall.

Cloakroom

WC. Wash hand basin. Radiator.

Bedroom 1

13' 7" max x 9' 6" max (4.14m max x 2.90m max)
Double glazed window to rear of aspect.
Fitted double wardrobe. Radiator.

En-Suite

WC. Wash hand basin, Shower cubicle, Part tiled, Radiator. Ext fan.

Bedroom 2

15' 6" max x 11' 7" max (4.72m max x 3.53m max)
Double glazed window to front of aspect. Built in storage over stairs. Radiator. TV.

Bathroom

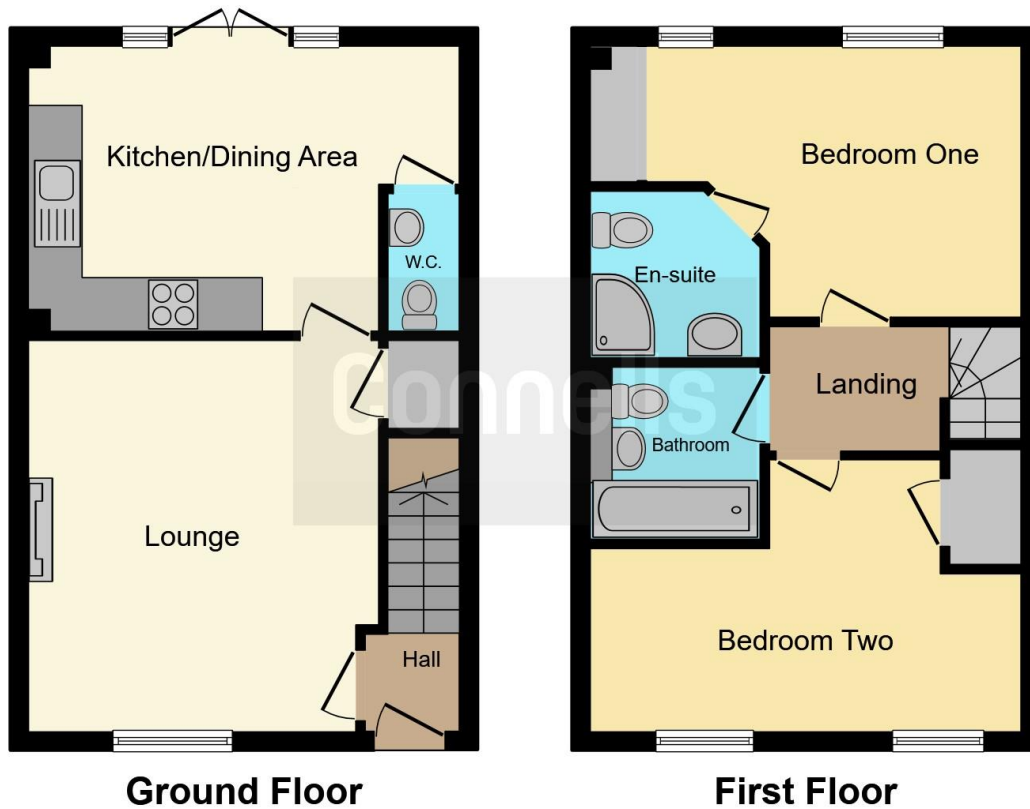
WC. Wash hand basin. Bath with mixer tap. Heated towel rail. Ext fan. Part tiled.

Outside

To the front. Lawn. Picket fence and gate with pathway leading to front door. Allocated parking space for two cars.

To the rear. Side access. Mainly laid to lawn. Patio. Steps up to elevated patio area.





This floorplan is for illustrative purposes only and is not drawn to scale. Measurements, floor-areas, openings and orientations are approximate. They should not be relied upon for any purpose and do not form any part of an agreement. No liability is taken for any error or mis-statement. All parties must rely on their own inspections.

To view this property please contact Connells on

T 02380 618 343
E eastleigh@connells.co.uk

19 Market Street
 EASTLEIGH SO50 5RH

EPC Rating: B

view this property online connells.co.uk/Property/EGH308199

Tenure: Freehold



1. MONEY LAUNDERING REGULATIONS Intending purchasers will be asked to produce identification documentation at a later stage and we would ask for your co-operation in order that there will be no delay in agreeing the sale. 2. These particulars do not constitute part or all of an offer or contract. 3. The measurements indicated are supplied for guidance only and as such must be considered incorrect. Potential buyers are advised to recheck measurements before committing to any expense. 4. We have not tested any apparatus, equipment, fixtures, fittings or services and it is in the buyers interest to check the working condition of any appliances.

Connells Residential is registered in England and Wales under company number 1489613, Registered Office is Cumbria House, 16-20 Hockliffe Street, Leighton Buzzard, Bedfordshire, LU7 1GN. VAT Registration Number is 500 2481 05.

See all our properties at www.connells.co.uk | www.rightmove.co.uk | www.zoopla.co.uk

Property Ref: EGH308199 - 0002