



Connells

Testbourne Avenue
Totton Southampton



Property Description

Connells are bringing to market this three bedroom semi-detached with NO CHAIN. The hallway is home to a handy W/C as well as the spacious lounge with ample dining space if desired, and large windows to let in plenty of natural light. The kitchen is separate, and has ample cupboard and counter space, in addition to the built-in storage/pantry, neutral cabinetry and conservatory access. The conservatory has garden access and is the perfect spot to relax and unwind! The rear garden is low-maintenance, consisting of lawn as well as patio, it is great for all activities! It also has a shed for added storage and convenience. Upstairs, the landing is home to built-in storage along with a three-piece shower room, comprised of a shower, toilet and hand-wash basin. This bathroom serves all three well-sized bedrooms, with two of them being home to built-in storage to maintain a clutter-free environment. Further benefits are driveway parking, with a lawn for added kerb appeal, double glazing, a garage and gas central heating.



New Forest National Park is close by and is a peaceful setting with easy access to scenic walks, outdoor activities and open green space. Local shops, pubs, health care facilities and reputable schools are near, while the nearby M27 provides excellent road links to Southampton, Lyndhurst and the wider South Coast - perfect for families seeking space, style and countryside living.

Hallway

Has W/C

W/C

Living Room

18' 1" x 15' 3" (5.51m x 4.65m)

Spacious with Dining Space & Conservatory Access

Kitchen

13' 8" x 10' 8" (4.17m x 3.25m)

Neutral Cabinetry, Freestanding Appliance Space, Ample Counter and Cupboard Space, Built-In Storage/Pantry and Conservatory Access

Conservatory

10' x 9' 8" (3.05m x 2.95m)

Has Garden Access

Stairs Leading To First Floor

Landing

Has Built-In Storage

Bedroom 1

15' 1" x 10' 6" (4.60m x 3.20m)

Bedroom 2

10' 5" x 9' 6" (3.17m x 2.90m)

Has Built-In Storage

Bedroom 3

11' 1" x 7' 1" (3.38m x 2.16m)

Has Built-In Storage

Shower Room

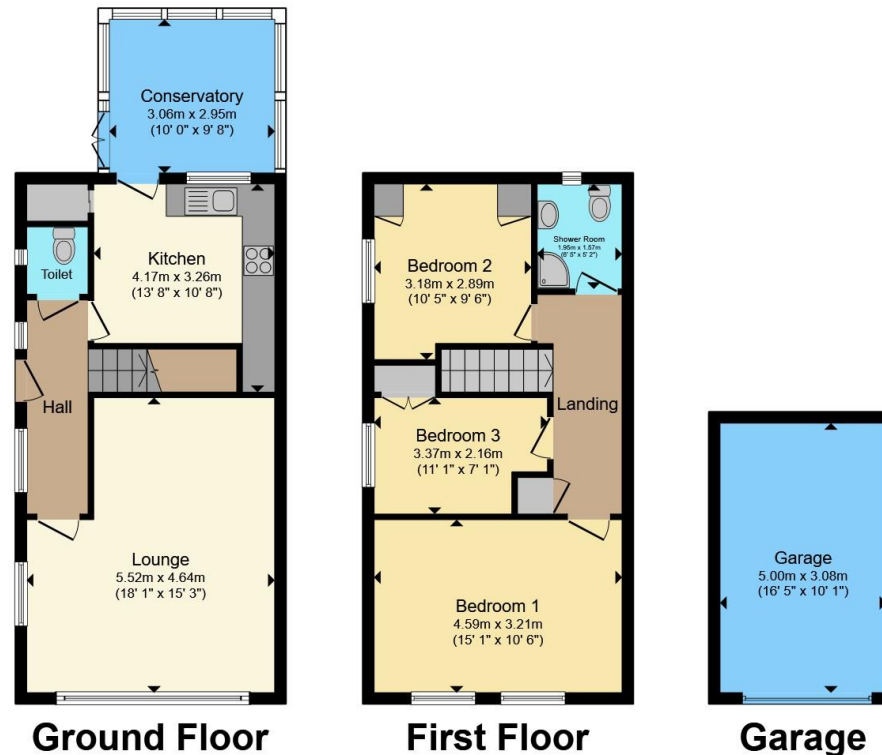
6' 5" x 5' 2" (1.96m x 1.57m)

Three-Piece with Shower, Hand-Wash Basin & Toilet









Total floor area 111.3 m² (1,198 sq.ft.) approx

This floor plan is for illustrative purposes only. It is not drawn to scale. Any measurements, floor areas (including any total floor area), openings and orientation are approximate. No details are guaranteed, they cannot be relied upon for any purpose and they do not form part of any agreement. No liability is taken for any error, omission or misstatement. A party must rely upon its own inspection(s). Powered by www.propertybox.io

Connells

To view this property please contact Connells on

T 02380 789 351
E shirley@connells.co.uk

409 Shirley Road Shirley
SOUTHAMPTON SO15 3JD

EPC Rating: D Council Tax
Band: D

Tenure: Freehold

view this property online connells.co.uk/Property/SSR312587



1. MONEY LAUNDERING REGULATIONS Intending purchasers will be asked to produce identification documentation at a later stage and we would ask for your co-operation in order that there will be no delay in agreeing the sale. 2. These particulars do not constitute part or all of an offer or contract. 3. The measurements indicated are supplied for guidance only and as such must be considered incorrect. Potential buyers are advised to recheck measurements before committing to any expense. 4. We have not tested any apparatus, equipment, fixtures, fittings or services and it is in the buyers interest to check the working condition of any appliances.

Connells Residential is registered in England and Wales under company number 1489613, Registered Office is Cumbria House, 16-20 Hockliffe Street, Leighton Buzzard, Bedfordshire, LU7 1GN. VAT Registration Number is 500 2481 05.

See all our properties at www.connells.co.uk | www.rightmove.co.uk | www.zoopla.co.uk

Property Ref: SSR312587 - 0002