



**Connells**

Goldcrest Gardens  
SOUTHAMPTON





## Property Description

Connells are proud to present this well-presented two-bedroom end-terraced home located in the sought-after Goldcrest Gardens in Lordwood. This charming property boasts residents-allocated off-road parking, gas central heating, and double glazing throughout. The ground and first-floor hallways both benefit from handy storage cupboards, adding to the home's practicality.

The spacious living room is beautifully decorated and features large French doors that open onto a generous rear garden. The garden is laid to lawn with a patio seating area, offering the perfect space for relaxing or entertaining. The well-equipped kitchen is fitted with sleek pale cream cabinetry, providing ample storage, along with integrated appliances for a clean and modern finish. Upstairs are two well-sized bedrooms, with the master benefiting from built-in wardrobes to ensure a clutter-free space. The contemporary three-piece shower room includes a walk-in shower, mirrored storage cabinet, and additional built-in storage around the toilet and hand-wash basin for added convenience.

This property is ideally located near Oakwood Primary School, rated 'Good' by Ofsted, making it perfect for families. Convenient transport links provide easy access to Southampton City Centre, Shirley High Street, and Southampton General Hospital. The area also offers numerous green spaces for outdoor enjoyment and easy access to the M27 and M3 motorways.

## Hallway

Has Storage Available

## Living Room

15' 2" x 13' 3" ( 4.62m x 4.04m )

Has Direct Access through French Doors to Rear Garden

## Kitchen

9' 8" x 6' 8" ( 2.95m x 2.03m )

Has Integrated Appliances and White Cabinetry

## Stairs Leading To First Floor

## Landing

Has Storage Available

## Bedroom 1

13' 2" x 9' 8" ( 4.01m x 2.95m )

Has Built-In Wardrobes Along Wall

## Bedroom 2

13' 7" MAX x 9' 1" ( 4.14m MAX x 2.77m )

## Shower Room

6' x 6' 6" ( 1.83m x 1.98m )

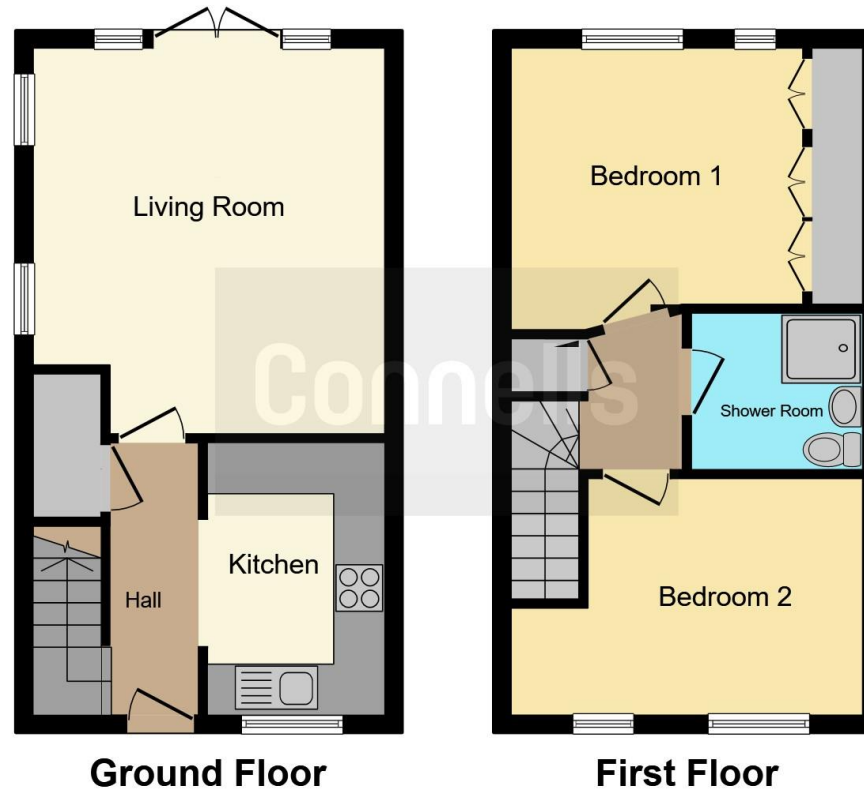












This floor plan is for illustrative purposes only. It is not drawn to scale. Any measurements, floor areas (including any total floor area), openings and orientation are approximate. No details are guaranteed, they cannot be relied upon for any purpose and they do not form part of any agreement. No liability is taken for any error, omission or misstatement. A party must rely upon its own inspection(s). Powered by [www.focalagent.com](http://www.focalagent.com)

To view this property please contact Connells on

**T 02380 789 351**  
**E [shirley@connells.co.uk](mailto:shirley@connells.co.uk)**

409 Shirley Road Shirley  
 SOUTHAMPTON SO15 3JD

**EPC Rating: Awaited**

Tenure: Freehold

**view this property online [connells.co.uk/Property/SSR311998](http://connells.co.uk/Property/SSR311998)**



1. MONEY LAUNDERING REGULATIONS Intending purchasers will be asked to produce identification documentation at a later stage and we would ask for your co-operation in order that there will be no delay in agreeing the sale. 2. These particulars do not constitute part or all of an offer or contract. 3. The measurements indicated are supplied for guidance only and as such must be considered incorrect. Potential buyers are advised to recheck measurements before committing to any expense. 4. We have not tested any apparatus, equipment, fixtures, fittings or services and it is in the buyers interest to check the working condition of any appliances.

Connells Residential is registered in England and Wales under company number 1489613, Registered Office is Cumbria House, 16-20 Hockliffe Street, Leighton Buzzard, Bedfordshire, LU7 1GN. VAT Registration Number is 500 2481 05.

**See all our properties at [www.connells.co.uk](http://www.connells.co.uk) | [www.rightmove.co.uk](http://www.rightmove.co.uk) | [www.zoopla.co.uk](http://www.zoopla.co.uk)**

Property Ref: SSR311998 - 0003