



Connells

Carnation Road
Southampton



Property Description

Situated in the highly popular residential location of Bassett Green. Connells are delighted to bring to the market this two-bedroom mid-terraced property. The property is very spacious, allowing you to create your perfect layout. The comfortable lounge benefits from a beautiful bay window and is currently home to a handy dining table for the family as well as a space to relax.

The kitchen is well-sized with ample cabinetry, integrated oven and double doors leading straight into the large rear garden which also has rear access. Upstairs are two good-sized bedrooms, one with a built-in wardrobe for added convenience. The bathroom is a contemporary three-piece that includes a toilet, hand-wash basin with storage and a bath with attached shower.

This property also benefits from gas central heating, a partially boarded loft that offers significant storage, driveway parking and close proximity to Southampton University, Southampton General Hospital and Southampton International Airport. There is also easy access to the M3 via the Avenue and M27 via Stoneham Way. This ensures easy commuting and convenience for all.

Additionally, the local area is well-served with amenities, including shops, restaurants, and essential services, enhancing the convenience and appeal of this location.

Hallway

Living Room/Dining Room

17' 3" x 11' 9" (5.26m x 3.58m)

Spacious Layout with Space for a Dining Table if Wanted

Kitchen/Breakfast Room

15' x 7' 1" (4.57m x 2.16m)

Spacious Layout with Space for a Family Table if Wanted. Also Has Double Doors Leading to Rear Garden

Rear Garden

Has Access Through Kitchen & Rear Access

Stairs Leading To First Floor

First Floor Landing

Bedroom 1

12' x 10' 5" (3.66m x 3.17m)

Has Built-In Double Wardrobe

Bedroom 2

12' x 7' 2" (3.66m x 2.18m)

Bathroom

8' 5" x 7' 4" (2.57m x 2.24m)

Three-Piece Bathroom with Toilet, Hand-Wash Basin with Storage & Bath with Attached Shower

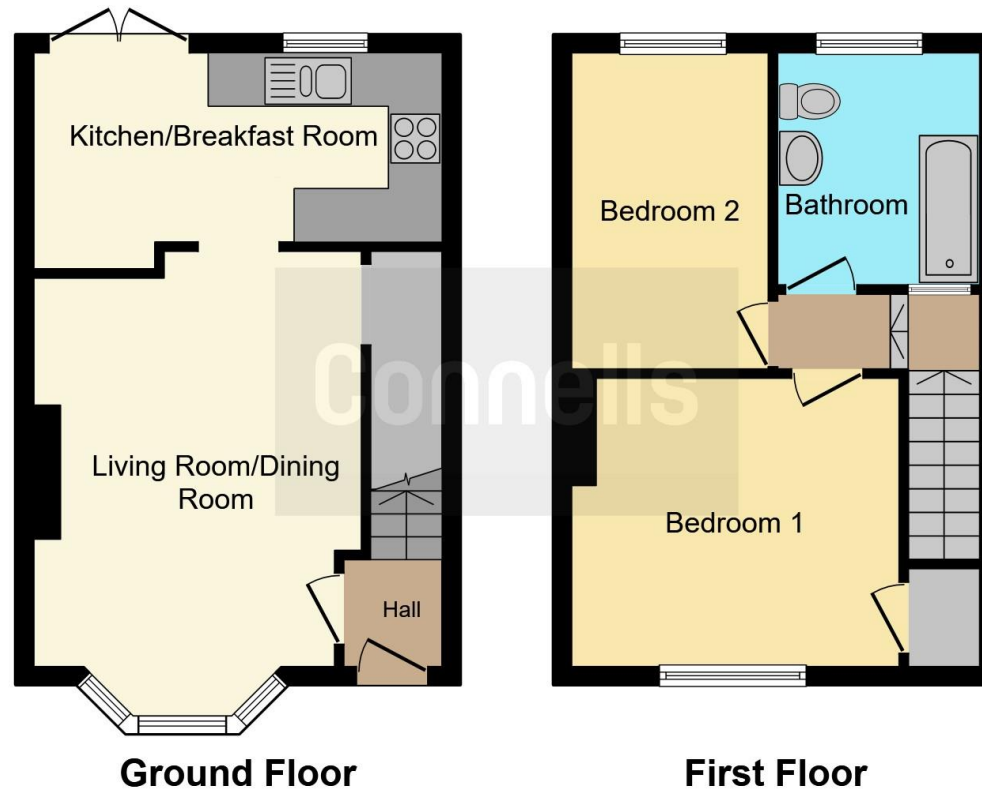
Loft

Partially Boarded with Storage









This floor plan is for illustrative purposes only. It is not drawn to scale. Any measurements, floor areas (including any total floor area), openings and orientation are approximate. No details are guaranteed, they cannot be relied upon for any purpose and they do not form part of any agreement. No liability is taken for any error, omission or misstatement. A party must rely upon its own inspection(s). Powered by www.focalagent.com

To view this property please contact Connells on

T 02380 789 351
E shirley@connells.co.uk

409 Shirley Road Shirley
 SOUTHAMPTON SO15 3JD

EPC Rating: C

Tenure: Freehold

view this property online connells.co.uk/Property/SSR311561



1. MONEY LAUNDERING REGULATIONS Intending purchasers will be asked to produce identification documentation at a later stage and we would ask for your co-operation in order that there will be no delay in agreeing the sale. 2. These particulars do not constitute part or all of an offer or contract. 3. The measurements indicated are supplied for guidance only and as such must be considered incorrect. Potential buyers are advised to recheck measurements before committing to any expense. 4. We have not tested any apparatus, equipment, fixtures, fittings or services and it is in the buyers interest to check the working condition of any appliances.

Connells Residential is registered in England and Wales under company number 1489613, Registered Office is Cumbria House, 16-20 Hockliffe Street, Leighton Buzzard, Bedfordshire, LU7 1GN. VAT Registration Number is 500 2481 05.

See all our properties at www.connells.co.uk | www.rightmove.co.uk | www.zoopla.co.uk

Property Ref: SSR311561 - 0006