



Connells

Oaklands Mead
Totton Southampton



Property Description

Connells are thrilled to present this stunning four-bedroom detached property, featuring a beautifully updated and modern decor in a Cul-De-Sac location. The house boasts a very large driveway with ample space for multiple cars.

The ground floor is spacious, offering a large lounge/diner, a sleek kitchen, and a convenient W/C. Upstairs, the first floor houses the expansive master bedroom with an en-suite, along with three other generously sized bedrooms. The full three-piece bathroom, complete with a bathtub, toilet, handwashing basin and a Velux Window, provides a relaxing atmosphere. Additionally, two of the bedrooms feature Velux Windows, enhancing the natural light throughout.

Outside, the garden is meticulously maintained, making it a gardeners dream. This beautiful and spacious home is located just a short walk from Totton Precinct, where you will find leading brand stores, variety of restaurants and food options plus more. Don't hesitate to contact us for a viewing today!



Hallway

Lounge/Diner

15' x 25' 3" (4.57m x 7.70m)

Kitchen

13' 8" x 13' 3" (4.17m x 4.04m)

Stairs To First Floor

Landing

Bathroom

7' 2" x 9' (2.18m x 2.74m)

Bedroom 4

8' 1" x 7' 7" (2.46m x 2.31m)

Bedroom 3

7' 8" x 11' 4" (2.34m x 3.45m)

Bedroom 2

12' x 9' 4" (3.66m x 2.84m)

Bedroom 1

13' 2" x 14' (4.01m x 4.27m)

With Ensuite

Ensuite

7' 1" x 3' 8" (2.16m x 1.12m)

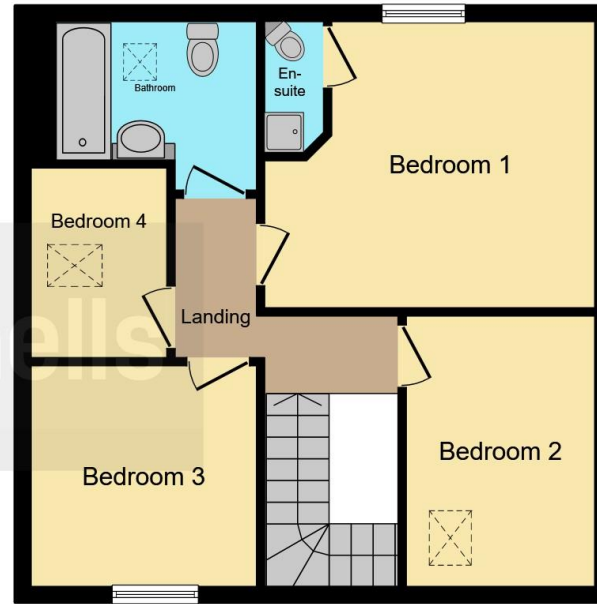








Ground Floor



First Floor

This floor plan is for illustrative purposes only. It is not drawn to scale. Any measurements, floor areas (including any total floor area), openings and orientation are approximate. No details are guaranteed, they cannot be relied upon for any purpose and they do not form part of any agreement. No liability is taken for any error, omission or misstatement. A party must rely upon its own inspection(s). Powered by www.focalagent.com

To view this property please contact Connells on

T 02380 789 351
E shirley@connells.co.uk

409 Shirley Road Shirley
 SOUTHAMPTON SO15 3JD

EPC Rating: B

Tenure: Freehold

view this property online connells.co.uk/Property/SSR311450



1. MONEY LAUNDERING REGULATIONS Intending purchasers will be asked to produce identification documentation at a later stage and we would ask for your co-operation in order that there will be no delay in agreeing the sale. 2. These particulars do not constitute part or all of an offer or contract. 3. The measurements indicated are supplied for guidance only and as such must be considered incorrect. Potential buyers are advised to recheck measurements before committing to any expense. 4. We have not tested any apparatus, equipment, fixtures, fittings or services and it is in the buyers interest to check the working condition of any appliances.

Connells Residential is registered in England and Wales under company number 1489613, Registered Office is Cumbria House, 16-20 Hockliffe Street, Leighton Buzzard, Bedfordshire, LU7 1GN. VAT Registration Number is 500 2481 05.

See all our properties at www.connells.co.uk | www.rightmove.co.uk | www.zoopla.co.uk

Property Ref: SSR311450 - 0003