



**Connells**

Romsey Road  
Southampton



### Property Description

Connells are excited to bring to market this stunning three-story townhouse. Upon entering, you'll find a convenient W/C on the ground floor, perfect for guests. The spacious kitchen is designed for ample storage and counter room. Leaving space for a dining table, you can always entertain whilst or after cooking! The property has double doors leading out of the kitchen, into a long garden with side gate access, ideal for outdoor activities and gardening enthusiasts.

The first floor features a Jack and Jill three-piece bathroom, complete with a toilet, bathtub, and hand washing basin, as well as a heated towel rack for added comfort. Bedrooms two and three are generously sized, making them perfect for family or guests. The entire house is adorned with modern, clean décor and benefits from wide, double-glazed windows that flood each room with natural light.

The top floor is dedicated to the luxurious master bedroom offering a three-piece ensuite bathroom with a toilet, walk-in shower, hand washing basin, and another heated towel rack. Adjoining the master bedroom is a private dressing room with a walk-in wardrobe, providing plentiful storage and a touch of elegance.

Situated within a short walk to popular takeouts, leading brand shops, and close to a primary school, this home offers a prime location. With frequent public transport options nearby, getting around is a breeze. Also has Allocated and Visitors Parking.



## Hallway

## Living Room

9' 9" x 13' 2" (2.97m x 4.01m)

## Hallway

## W/C

3' 3" x 5' 6" (0.99m x 1.68m)

## Kitchen/Dining Room

11' 6" x 13' 3" (3.51m x 4.04m)

## Stairs Leading to First Floor

## Landing

## Bedroom 2

6' 2" x 8' 3" (1.88m x 2.51m)

## Bathroom

6' 2" x 6' 5" (1.88m x 1.96m)

## Bedroom 3

7' 6" x 13' 2" (2.29m x 4.01m)

## Stairs Leading to Second Floor

## Bedroom 1

9' 8" x 13' 3" (2.95m x 4.04m)

Has Ensuite and Dressing Room with Walk in Wardrobe

## Dressing Room

10' 5" x 6' 9" (3.17m x 2.06m)

Walk In Wardrobe

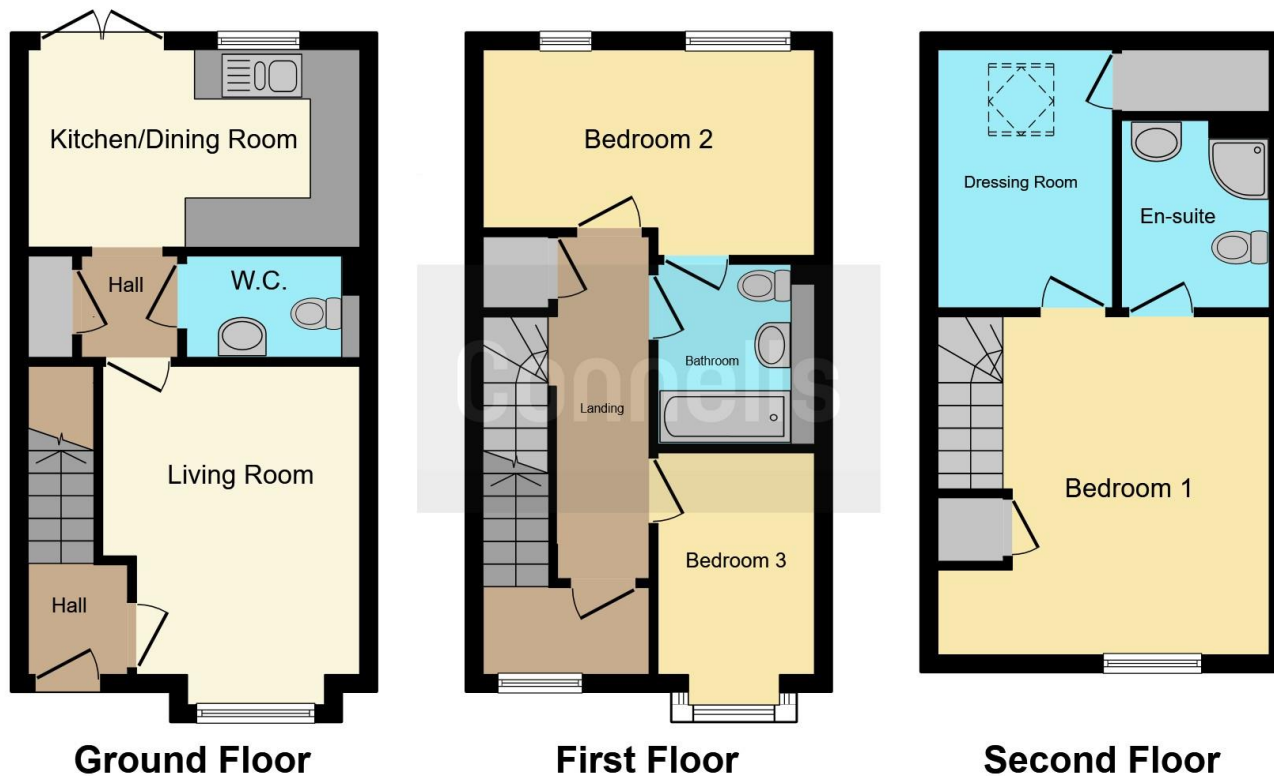
## Ensuite

7' 8" x 5' 8" (2.34m x 1.73m)









This floor plan is for illustrative purposes only. It is not drawn to scale. Any measurements, floor areas (including any total floor area), openings and orientation are approximate. No details are guaranteed, they cannot be relied upon for any purpose and they do not form part of any agreement. No liability is taken for any error, omission or misstatement. A party must rely upon its own inspection(s). Powered by [www.focalagent.com](http://www.focalagent.com)

To view this property please contact Connells on

**T 02380 789 351**  
**E [shirley@connells.co.uk](mailto:shirley@connells.co.uk)**

409 Shirley Road Shirley  
 SOUTHAMPTON SO15 3JD

**EPC Rating: B**

**view this property online [connells.co.uk/Property/SSR311433](http://connells.co.uk/Property/SSR311433)**

Tenure: Freehold



1. MONEY LAUNDERING REGULATIONS Intending purchasers will be asked to produce identification documentation at a later stage and we would ask for your co-operation in order that there will be no delay in agreeing the sale. 2. These particulars do not constitute part or all of an offer or contract. 3. The measurements indicated are supplied for guidance only and as such must be considered incorrect. Potential buyers are advised to recheck measurements before committing to any expense. 4. We have not tested any apparatus, equipment, fixtures, fittings or services and it is in the buyers interest to check the working condition of any appliances.

Connells Residential is registered in England and Wales under company number 1489613, Registered Office is Cumbria House, 16-20 Hockliffe Street, Leighton Buzzard, Bedfordshire, LU7 1GN. VAT Registration Number is 500 2481 05.

**See all our properties at [www.connells.co.uk](http://www.connells.co.uk) | [www.rightmove.co.uk](http://www.rightmove.co.uk) | [www.zoopla.co.uk](http://www.zoopla.co.uk)**

Property Ref: SSR311433 - 0002