



Connells

Tremona Court Tremona Road
Southampton



Property Description

Located only a stone's throw from Southampton General Hospital in a quiet cul-de-sac, this spacious and wonderfully presented split-level apartment is situated in the highly desirable Tremona Court development and is truly perfect for rental investment or owner occupiers. The property comprises a private entrance leading you to the first floor where you have the open plan kitchen/living area and bedroom two. The second floor benefits from the main bedroom and the modern bathroom suite. The property also benefits from modern heating, double glazing and an allocated parking space. A viewing is highly recommended to truly appreciate the accommodation we have on offer here in the desirable development of Tremona Court.

The property is located in an extremely convenient and sought after location. Local shops are available in Shirley and more comprehensive facilities are available in the City Centre which include West Quay. Southampton Common offers walks in over 300 acres of parkland and further recreational facilities may be found at the Sports Centre. There are easy access routes to the M3 and M27 and Southampton International airport is off junction 5 of the M27. The University and Southampton General Hospital are also within easy reach.

Private Entrance

Stairs Leading To First Floor

Hall

Kitchen / Living Room

19' 8" max x 12' 7" max (5.99m max x 3.84m max)

Bedroom 2

12' 7" x 6' 3" (3.84m x 1.91m)

Stairs Leading To Second Floor

Landing

Bedroom 1

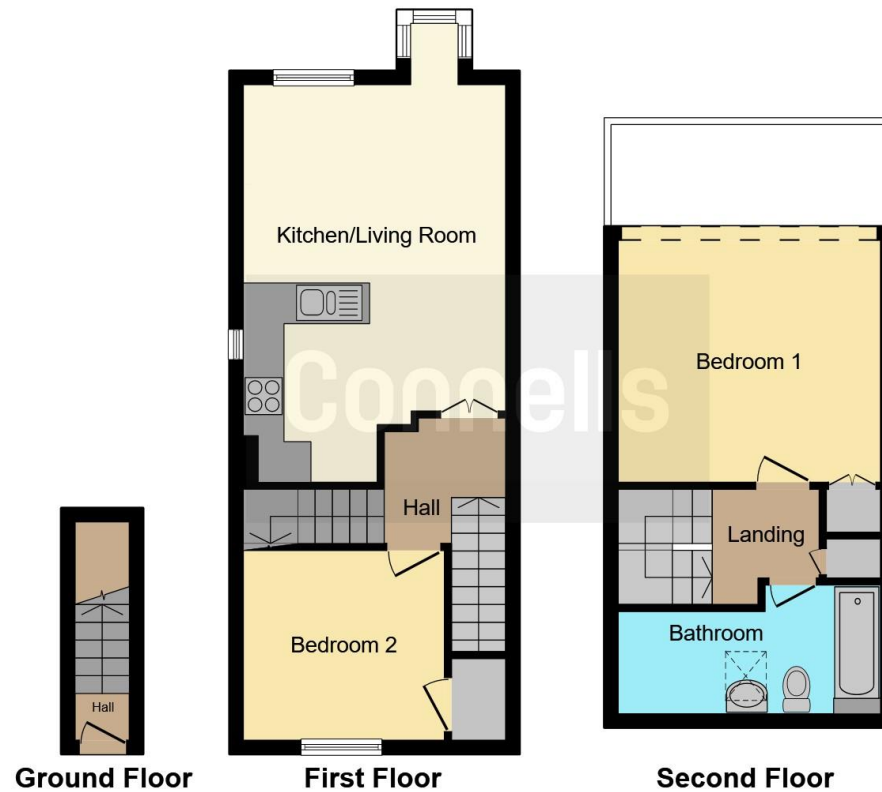
12' 8" x 10' 5" (3.86m x 3.17m)

Bathroom









This floor plan is for illustrative purposes only. It is not drawn to scale. Any measurements, floor areas (including any total floor area), openings and orientation are approximate. No details are guaranteed, they cannot be relied upon for any purpose and they do not form part of any agreement. No liability is taken for any error, omission or misstatement. A party must rely upon its own inspection(s). Powered by www.focalagent.com

To view this property please contact Connells on

T 02380 789 351
E shirley@connells.co.uk

409 Shirley Road Shirley
 SOUTHAMPTON SO15 3JD

EPC Rating: D

Tenure: Leasehold

view this property online connells.co.uk/Property/SSR311156

This is a Leasehold property with details as follows; Term of Lease 125 years from 01 Aug 1987. Should you require further information please contact the branch. Please Note additional fees could be incurred for items such as



1. MONEY LAUNDERING REGULATIONS Intending purchasers will be asked to produce identification documentation at a later stage and we would ask for your co-operation in order that there will be no delay in agreeing the sale. 2. These particulars do not constitute part or all of an offer or contract. 3. The measurements indicated are supplied for guidance only and as such must be considered incorrect. Potential buyers are advised to recheck measurements before committing to any expense. 4. We have not tested any apparatus, equipment, fixtures, fittings or services and it is in the buyers interest to check the working condition of any appliances.

Connells Residential is registered in England and Wales under company number 1489613, Registered Office is Cumbria House, 16-20 Hockliffe Street, Leighton Buzzard, Bedfordshire, LU7 1GN. VAT Registration Number is 500 2481 05.

See all our properties at www.connells.co.uk | www.rightmove.co.uk | www.zoopla.co.uk

Property Ref: SSR311156 - 0007