



Connells

Oakley Court Oakley Road
Southampton



Property Description

Situated in one of the most desirable retirement blocks in Southampton, Connells are delighted to bring to the market this one bedroom first floor apartment in the desired development in Oakley Court, which is in the sought after area of Regents Park, so is just a stone throw away from all the amenities on Shirley High street including Shops, Supermarkets, Cafes, Bars and Restaurants. The property comprises a hallway with storage and airing cupboards, lounge/dining area, kitchen, one bedroom, a modern and recently refitted shower room, a 24 Hour Emergency Call System and a recently installed Gledhill BoilerMate tank. There are also a range of communal facilities available including lift, communal lounge, kitchen and laundry room. The property is being offered with no forward chain and a viewing is highly recommended to truly appreciate the accommodation we have on offer here in Oakley Court.



Oakley Court is an Over 60's retirement block located in the centre of Shirley, just off the high street. The road is situated towards Southampton and allows for an easy commute into the city centre which offers a wide range of shopping facilities including the West Quay shopping mall. With easy access to various motorway links and mainline railway stations, it is perfectly located for commuters. Local amenities can be found close by on Shirley High Street.

Communal Entrance

Residents Parking

Lift To All Floors

Hallway

Lounge

19' 7" x 10' 7" (5.97m x 3.23m)

Kitchen

7' 6" x 7' 1" max (2.29m x 2.16m max)

Bedroom

17' 6" max x 9' 1"
(5.33m max x 2.77m)

Bathroom

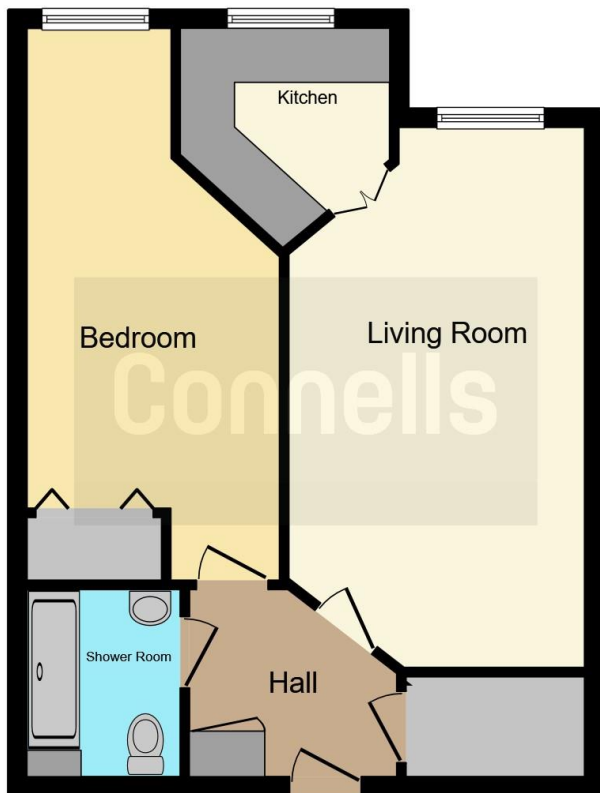
6' 8" x 5' 5" (2.03m x 1.65m)

Residents Lounge

Residents Room

Laundry





This floorplan is for illustrative purposes only and is not drawn to scale. Measurements, floor-areas, openings and orientations are approximate. They should not be relied upon for any purpose and do not form any part of an agreement. No liability is taken for any error or mis-statement. All parties must rely on their own inspections.

To view this property please contact Connells on

T 02380 789 351
E shirley@connells.co.uk

409 Shirley Road Shirley
 SOUTHAMPTON SO15 3JD

EPC Rating: B

view this property online connells.co.uk/Property/SSR310849

This is a Leasehold property with details as follows; Term of Lease 125 years from 01 Apr 2002. Should you require further information please contact the branch. Please Note additional fees could be incurred for items such as Leasehold packs.

Tenure: Leasehold



1. MONEY LAUNDERING REGULATIONS Intending purchasers will be asked to produce identification documentation at a later stage and we would ask for your co-operation in order that there will be no delay in agreeing the sale. 2. These particulars do not constitute part or all of an offer or contract. 3. The measurements indicated are supplied for guidance only and as such must be considered incorrect. Potential buyers are advised to recheck measurements before committing to any expense. 4. We have not tested any apparatus, equipment, fixtures, fittings or services and it is in the buyers interest to check the working condition of any appliances.

Connells Residential is registered in England and Wales under company number 1489613, Registered Office is Cumbria House, 16-20 Hockliffe Street, Leighton Buzzard, Bedfordshire, LU7 1GN. VAT Registration Number is 500 2481 05.

See all our properties at www.connells.co.uk | www.rightmove.co.uk | www.zoopla.co.uk

Property Ref: SSR310849 - 0010