

for sale

£240,000



Marion Walk HEMEL HEMPSTEAD HP2 6PP

Well presented semi detached house and an ideal first time purchase. Boasting one bedroom, 15'1 lounge, fitted kitchen, gas central heating, double glazing, own rear garden and allocated PARKING.

Marion Walk HEMEL HEMPSTEAD HP2 6PP

Entrance Hall

Door to front.

Lounge

15' 1" max x 13' 10" max (4.60m max x 4.22m max)

Double glazed window to front, radiator, TV point, stairs to first floor and double glazed patio doors.

Kitchen

13' 10" max x 6' 9" max (4.22m max x 2.06m max)

Fitted with wall and base units with work surfaces to compliment, stainless steel sink/drainer with tiled splashbacks, gas oven and hob, plumbing for washing machine, fridge/freezer, central heating boiler, radiator, double glazed window to side and door to lounge.



Landing

Stairs from lounge, access to loft, airing cupboard and double glazed window to side.

Bedroom

13' 10" x 10' 7" (4.22m x 3.23m)

Double glazed window to front and radiator.

Bathroom

Fitted with bath with mixer tap, shower, wash hand basin, low level WC, heated towel rail, part tiling and double glazed window to front.

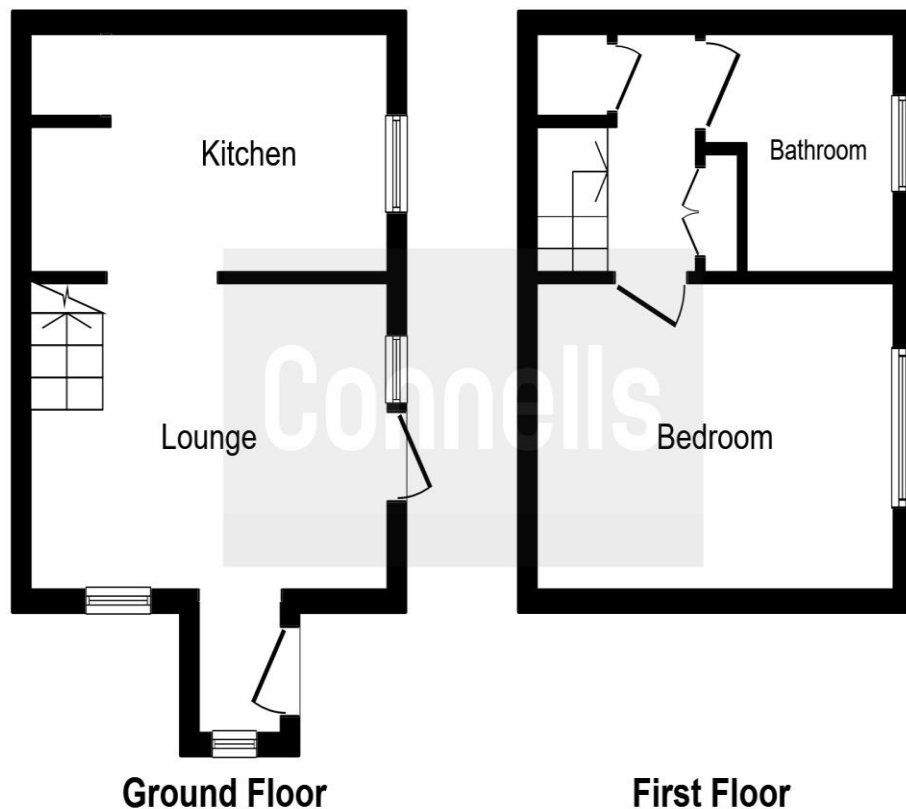
Rear Garden

Laid to lawn with patio area.

Parking

Allocated parking.





This floor plan is for illustrative purposes only. It is not drawn to scale. Any measurements, floor areas (including any total floor area), openings and orientation are approximate. No details are guaranteed, they cannot be relied upon for any purpose and they do not form part of any agreement. No liability is taken for any error, omission or misstatement. A party must rely upon its own inspection(s).
Plan produced for Connells. Powered by www.focalagent.com

To view this property please contact Connells on

T 01442 216 633
E hemelhempstead@connells.co.uk

45 Marlowes
HEMEL HEMPSTEAD HP1 1LD

Property Ref: HEM310719 - 0004

Tenure: Freehold

EPC Rating: C

view this property online connells.co.uk/Property/HEM310719



1. MONEY LAUNDERING REGULATIONS Intending purchasers will be asked to produce identification documentation at a later stage and we would ask for your co-operation in order that there will be no delay in agreeing the sale. 2. These particulars do not constitute part or all of an offer or contract. 3. The measurements indicated are supplied for guidance only and as such must be considered incorrect. Potential buyers are advised to recheck measurements before committing to any expense. 4. We have not tested any apparatus, equipment, fixtures, fittings or services and it is in the buyers interest to check the working condition of any appliances.

Connells Residential is registered in England and Wales under company number 1489613, Registered Office is Cumbria House, 16-20 Hockliffe Street, Leighton Buzzard, Bedfordshire, LU7 1GN. VAT Registration Number is 500 2481 05.

see all our properties at www.connells.co.uk | www.rightmove.co.uk | www.zoopla.co.uk