



Connells

Bassingburn Walk
Welwyn Garden City



Property Description

A well-presented two-bedroom terraced home, ideally located on Bassingburn Walk in Welwyn Garden City. Offering ample parking and presented in modern, well-maintained condition, this home is perfect for those seeking a move-in ready property. The accommodation comprises a bright and inviting lounge, a contemporary kitchen, and two generously sized double bedrooms. Outside, the rear garden features a stylish decking area - ideal for relaxing or entertaining. With its excellent location close to local amenities and transport links, this property is an ideal choice for first-time buyers, downsizers, or investors alike.

Lounge

14' 8" x 11' 3" (4.47m x 3.43m)

Kitchen

13' 3" x 8' 6" (4.04m x 2.59m)

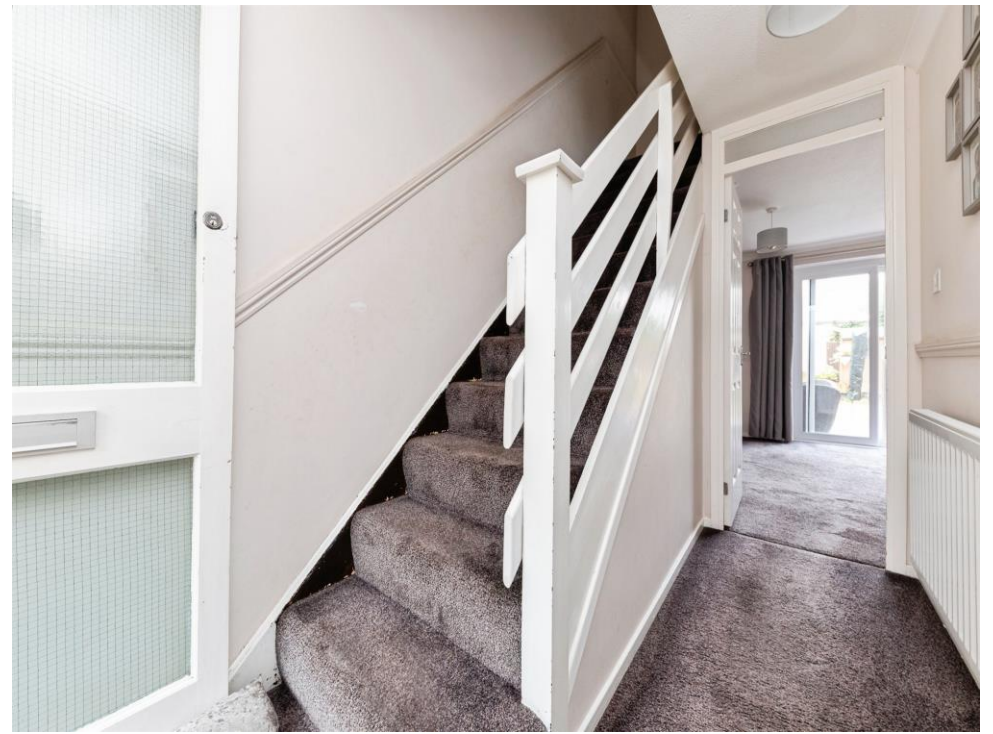
Bedroom 1

14' 5" x 6' 8" (4.39m x 2.03m)

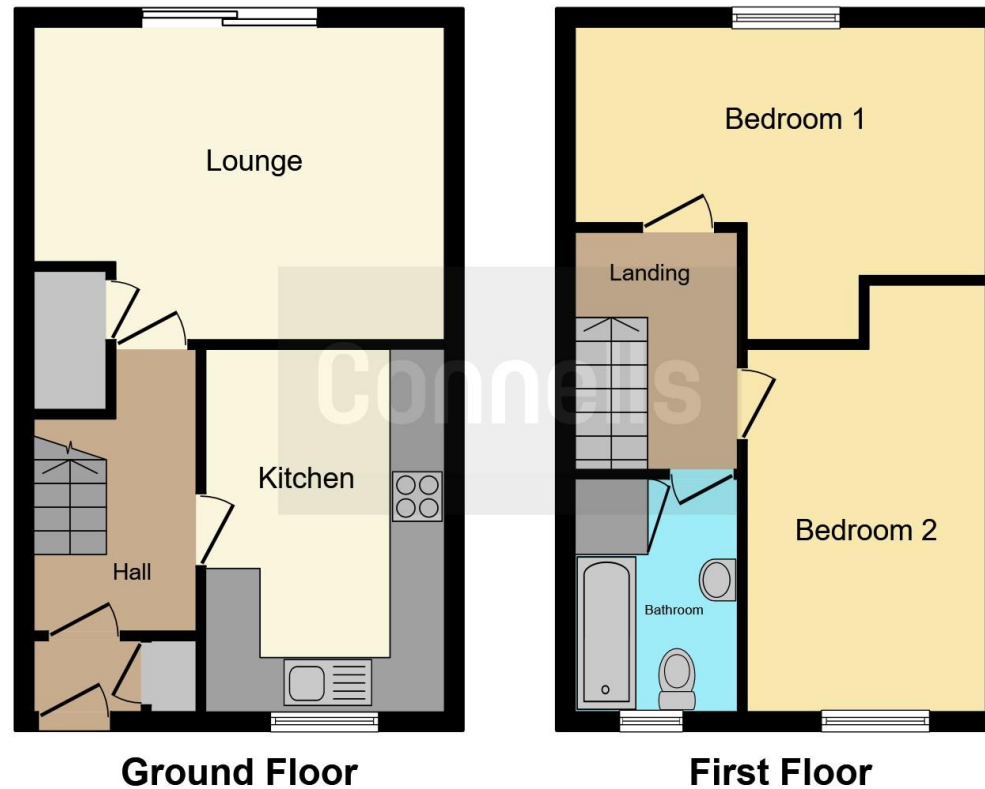
Bedroom 2

13' 2" plus recess x 8' 6" (4.01m plus recess x 2.59m)









This floor plan is for illustrative purposes only. It is not drawn to scale. Any measurements, floor areas (including any total floor area), openings and orientation are approximate. No details are guaranteed, they cannot be relied upon for any purpose and they do not form part of any agreement. No liability is taken for any error, omission or misstatement. A party must rely upon its own inspection(s). Powered by www.focalagent.com

To view this property please contact Connells on

T 01707 322 903
E welwyngardencity@connells.co.uk

38 Wigmores North
 WELWYN GARDEN CITY AL8 6PH

EPC Rating: D Council Tax
 Band: C

Tenure: Freehold

view this property online connells.co.uk/Property/WWY306153



1. MONEY LAUNDERING REGULATIONS Intending purchasers will be asked to produce identification documentation at a later stage and we would ask for your co-operation in order that there will be no delay in agreeing the sale. 2. These particulars do not constitute part or all of an offer or contract. 3. The measurements indicated are supplied for guidance only and as such must be considered incorrect. Potential buyers are advised to recheck measurements before committing to any expense. 4. We have not tested any apparatus, equipment, fixtures, fittings or services and it is in the buyers interest to check the working condition of any appliances.

Connells Residential is registered in England and Wales under company number 1489613, Registered Office is Cumbria House, 16-20 Hockliffe Street, Leighton Buzzard, Bedfordshire, LU7 1GN. VAT Registration Number is 500 2481 05.

See all our properties at www.connells.co.uk | www.rightmove.co.uk | www.zoopla.co.uk

Property Ref: WWY306153 - 0008