



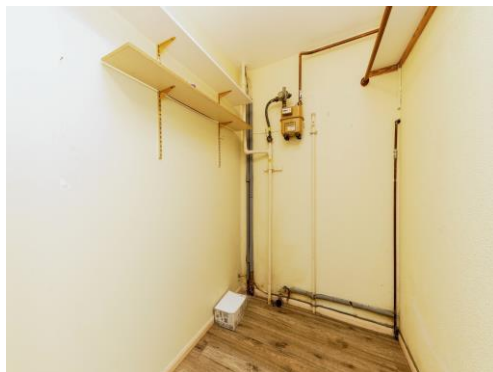
Not for marketing purposes INTERNAL USE ONLY

Aldbury Grove  
Welwyn Garden City



# Aldbury Grove Welwyn Garden City AL7 2LD

for sale guide price  
**£150,000**



## Property Description

Connells are bringing to market this CHAIN FREE GROUND FLOOR FLAT which is the popular area of Panshanger in Welwyn Garden City. This property boasts of a DOUBLE BEDROOM, communal parking and local walking distance to a large SUPERMARKET. With good connections into the town centre, this is a MUST SEE for a first-time buyer or an investment purchase.

PLEASE BOOK YOUR VIEWING.

## Auctioneer's Comments

This property is offered through Modern Method of Auction. Should you view, offer or bid your data will be shared with the Auctioneer, Iamsold Limited. This method requires both parties to complete the transaction within 56 days, allowing buyers to proceed with mortgage finance (subject to lending criteria, affordability and survey).

The buyer is required to sign a reservation agreement and make payment of a non-refundable Reservation Fee of 4.5% of the purchase price including VAT, subject to a minimum of £6600.00 including VAT. This fee is paid in addition to purchase price and will be considered as part of the chargeable consideration for the property in the calculation for stamp duty liability. Buyers will be required to complete an identification process with Iamsold and provide proof of how the purchase would be funded.

The property has a Buyer Information Pack containing documents about the property. The documents may not tell you everything you

need to know, so you must complete your own due diligence before bidding. A sample of the Reservation Agreement and terms and conditions are contained within this pack. The buyer will also make payment of no more than £349 inc. VAT towards the preparation cost of the pack. Please confirm exact costs with the auctioneer.

The estate agent and auctioneer may recommend the services of other providers to you, in which they will be paid for the referral. These services are optional, and you will be advised of any payment, in writing before any services are accepted. Listing is subject to a start price and undisclosed reserve price that can change.

## Entrance Hallway

Double glazed front door, radiator.

## Lounge

14' 8" x 10' 7" (4.47m x 3.23m)

TV and telephone point. Radiator, Double glazed window to the rear.

## Kitchen

9' 4" x 11' 5" (2.84m x 3.48m)

Cupboards throughout at high and low level, sink and drainer, extractor fan, radiator, double glazed window to the front. Room for electric oven, fridge and washing machine. Boiler service in November 2024.

## Store Room

9' 4" x 11' 5" (2.84m x 3.48m)

No plumbing.

## Bedroom 1

9' 6" x 10' 4" (2.90m x 3.15m)

Double glazed window to the rear, radiator.

Fitted wardrobes, carpet.

## Bathroom

Shower cubicle, wash hand basin, low level w/c, Heated towel rail, tiled walls, frosted double glazed window to the front.













This floor plan is for illustrative purposes only. It is not drawn to scale. Any measurements, floor areas (including any total floor area), openings and orientation are approximate. No details are guaranteed, they cannot be relied upon for any purpose and they do not form part of any agreement. No liability is taken for any error, omission or misstatement. A party must rely upon its own inspection(s). Powered by [www.focalagent.com](http://www.focalagent.com)

To view this property please contact Connells on

**T 01707 322 903**  
**E [welwyngardencity@connells.co.uk](mailto:welwyngardencity@connells.co.uk)**

38 Wigmores North  
 WELWYN GARDEN CITY AL8 6PH

**EPC Rating: C**

Tenure: Leasehold

**check out more properties at [connells.co.uk](http://connells.co.uk)**

This is a Leasehold property with details as follows; Term of Lease 125 years from 14 Mar 1988. Should you require further information please contact the branch. Please Note additional fees could be incurred for items such as

1. MONEY LAUNDERING REGULATIONS Intending purchasers will be asked to produce identification documentation at a later stage and we would ask for your co-operation in order that there will be no delay in agreeing the sale. 2. These particulars do not constitute part or all of an offer or contract. 3. The measurements indicated are supplied for guidance only and as such must be considered incorrect. Potential buyers are advised to recheck measurements before committing to any expense. 4. We have not tested any apparatus, equipment, fixtures, fittings or services and it is in the buyers interest to check the working condition of any appliances.

Connells Residential is registered in England and Wales under company number 1489613, Registered Office is Cumbria House, 16-20 Hockliffe Street, Leighton Buzzard, Bedfordshire, LU7 1GN. VAT Registration Number is 500 2481 05.



**See all our properties at [www.connells.co.uk](http://www.connells.co.uk) | [www.rightmove.co.uk](http://www.rightmove.co.uk) | [www.zoopla.co.uk](http://www.zoopla.co.uk)**

Property Ref: WWY307182 - 0003