



Connells

Chambers Grove
Welwyn Garden City



Property Description

Connells are PROUD to present this UNIQUE three-bed coach house which is in the popular Woodhall area of Welwyn Garden City. Its located on the Meadow Park development which is in the southern side of the town centre. This property includes a En-Suite to the master, three bedrooms all with fitted wardrobes, side access via the rear garden and TWO allocated parking spaces to the front.

This is a MUST SEE property so call us to BOOK YOUR SLOT!

Entrance Hallway

Double glazed front door, radiator and stairs leading to the first floor.

Kitchen

9' 11" x 8' 11" (3.02m x 2.72m)

Gas hob and electric oven. Space for washing machine, fridge freezer & dishwasher, stainless sink and drainer, double glazed window to side, cupboards at wall and base level, worktops and radiator.

Lounge

15' 7" x 11' 4" (4.75m x 3.45m)

TV & telephone point. Double glazed sliding patio door to the rear. Radiator.

Cloakroom

Low Level WC, Basin with vanity unit.

Radiator.

First Floor

Landing

Split level landing, built in airing cupboard housing combi gas boiler. Access to loft.

Bedroom 1

14' 6" x 12' 4" (4.42m x 3.76m)

Radiator, double glazed window to front, TV point and fitted wardrobes

En-Suite

Low Level WC, wash hand basin, walk in shower, frosted double glazed window to side.

Bedroom 2

15' 7" x 9' 1" (4.75m x 2.77m)

Double glazed window to the front, radiator and fitted wardrobe.

Bedroom 3

12' x 6' 8" (3.66m x 2.03m)

Radiator, fitted wardrobes and double glazed window to rear.

Bathroom

Bath with shower attachment, low level WC, Sink unit and radiator.

External

Rear Garden

Paved patio with canopy, laid to lawn with shrub bed borders and gated side access.

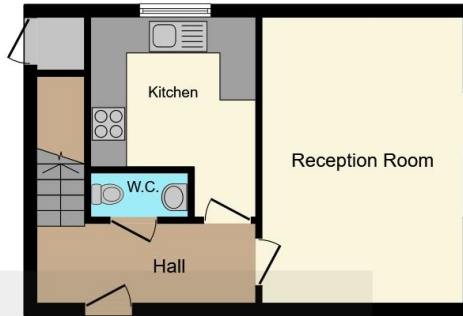
Parking

Two Allocated Parking Space.









Ground Floor



First Floor

This floor plan is for illustrative purposes only. It is not drawn to scale. Any measurements, floor areas (including any total floor area), openings and orientation are approximate. No details are guaranteed, they cannot be relied upon for any purpose and they do not form part of any agreement. No liability is taken for any error, omission or misstatement. A party must rely upon its own inspection(s). Powered by www.focalagent.com

To view this property please contact Connells on

T 01707 322 903

E welwyngardencity@connells.co.uk

38 Wigmores North
WELWYN GARDEN CITY AL8 6PH

EPC Rating: C

Tenure: Freehold

view this property online connells.co.uk/Property/WWY306932



1. MONEY LAUNDERING REGULATIONS Intending purchasers will be asked to produce identification documentation at a later stage and we would ask for your co-operation in order that there will be no delay in agreeing the sale. 2. These particulars do not constitute part or all of an offer or contract. 3. The measurements indicated are supplied for guidance only and as such must be considered incorrect. Potential buyers are advised to recheck measurements before committing to any expense. 4. We have not tested any apparatus, equipment, fixtures, fittings or services and it is in the buyers interest to check the working condition of any appliances.

Connells Residential is registered in England and Wales under company number 1489613, Registered Office is Cumbria House, 16-20 Hockliffe Street, Leighton Buzzard, Bedfordshire, LU7 1GN. VAT Registration Number is 500 2481 05.

See all our properties at www.connells.co.uk | www.rightmove.co.uk | www.zoopla.co.uk

Property Ref: WWY306932 - 0016