



Connells

Nimrod Drive
Hatfield



Property Description

A two bedroom semi-detached home which benefits from a downstairs cloakroom, lounge and kitchen/diner, to the first floor there are two bedrooms, the master with EN-SUITE shower room and a family bathroom.

Externally there is an enclosed rear garden and an allocated parking space.

Entrance Hall

Front door, wood effect flooring, door into cloakroom.

Cloakroom

Low level WC, wash hand basin and extractor fan.

Lounge

14' 5" x 10' 4" (4.39m x 3.15m)

Double glazed window to front, TV point, radiator and built in understairs cupboard.

Kitchen/Diner

13' 6" x 9' (4.11m x 2.74m)

Double glazed sliding patio doors onto rear garden, stainless steel sink and drainer, electric hob with electric oven, space for fridge-freezer, plumbing for washing machine, cupboards at wall and base level, worktops, wall based combi gas boiler and stairs to first floor.

First Floor

Landing

Access to loft via loft ladder, built in linen cupboard.

Bedroom One

10' 7" x 8' 2" (3.23m x 2.49m)

Double glazed window to front, radiator, built in wardrobe and door into en-suite shower room.

En-Suite Shower Room

Frosted double glazed window to front, shower cubicle, wash hand basin, fully tiled walls and heated towel rail.

Bedroom Two

7' 1" x 10' 5" (2.16m x 3.17m)

Double glazed window to rear and built in wardrobe.

Family Bathroom

Panelled bath with shower unit over, glass bifolding shower screen, Low level WC, Vanity wash hand basin, fully tiled walls, frosted double glazed window and heated towel rail.

External

Rear Garden

Paved patio, laid to lawn, timber shed, gated side access, outside tap and power point.

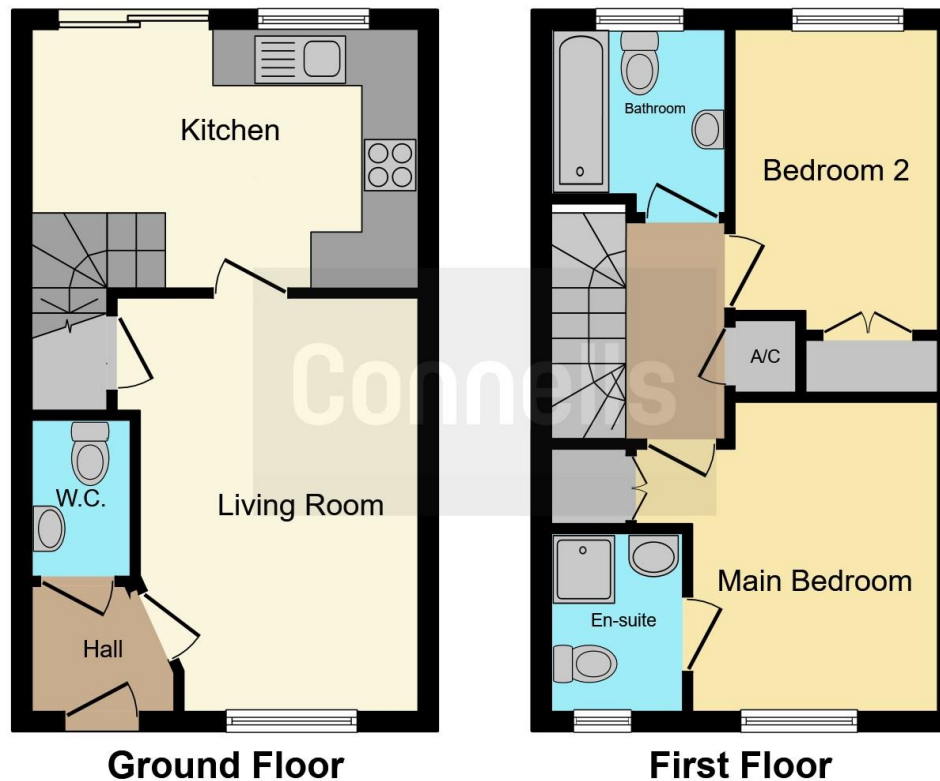
Parking

One allocated car park space and a number of visitor spaces.









This floor plan is for illustrative purposes only. It is not drawn to scale. Any measurements, floor areas (including any total floor area), openings and orientation are approximate. No details are guaranteed, they cannot be relied upon for any purpose and they do not form part of any agreement. No liability is taken for any error, omission or misstatement. A party must rely upon its own inspection(s). Powered by www.focalagent.com

To view this property please contact Connells on

T 01707 322 903
E welwyngardencity@connells.co.uk

38 Wigmores North
 WELWYN GARDEN CITY AL8 6PH

EPC Rating: C

view this property online connells.co.uk/Property/WWY306898

Tenure: Freehold



1. MONEY LAUNDERING REGULATIONS Intending purchasers will be asked to produce identification documentation at a later stage and we would ask for your co-operation in order that there will be no delay in agreeing the sale. 2. These particulars do not constitute part or all of an offer or contract. 3. The measurements indicated are supplied for guidance only and as such must be considered incorrect. Potential buyers are advised to recheck measurements before committing to any expense. 4. We have not tested any apparatus, equipment, fixtures, fittings or services and it is in the buyers interest to check the working condition of any appliances.

Connells Residential is registered in England and Wales under company number 1489613, Registered Office is Cumbria House, 16-20 Hockliffe Street, Leighton Buzzard, Bedfordshire, LU7 1GN. VAT Registration Number is 500 2481 05.

See all our properties at www.connells.co.uk | www.rightmove.co.uk | www.zoopla.co.uk

Property Ref: WWY306898 - 0006