



Connells

Woodhall Court
Welwyn Garden City



Property Description

A chain free, three-bedroom family home with a driveway for two cars. Situated in this popular location, Benefits include a refitted kitchen, gas central heating and a maintenance free rear garden. Close to the railway station and town centre amenities.

Entrance Hall

Double Glazed front door, stairs to first floor, wood effect floor and built in cupboard, 2 radiators, understairs cupboard and double-glazed door to rear

Cloakroom

Low Level WC, wash hand basin, double glazing with towel rail

Lounge

14' 1" x 11' 8" (4.29m x 3.56m)

Double glazed windows to the front, three radiators, TV point and wood effect flooring.

Kitchen

11' 8" x 11' 6" (3.56m x 3.51m)

Stainless steel sink and drainer, gas hob with extractor hood, integrated electric oven and microwave. space for fridge freezer and plumbing for washing machine. Double glazed window to the rear.

Landing

built in cupboard with combi gas boiler.

Bedroom One

13' 8" x 8' 10" (4.17m x 2.69m)

Double glazed window to the front, built in wardrobe to the side and over the bed, 1 x radiator.

Bedroom Two

11' 1" x 8' 5" (3.38m x 2.57m)

Double glazed window to the rear, built in wardrobe and radiator.

Bedroom Three

9' 4" x 8' 9" (2.84m x 2.67m)

Double glazed window to the front, radiator and display area

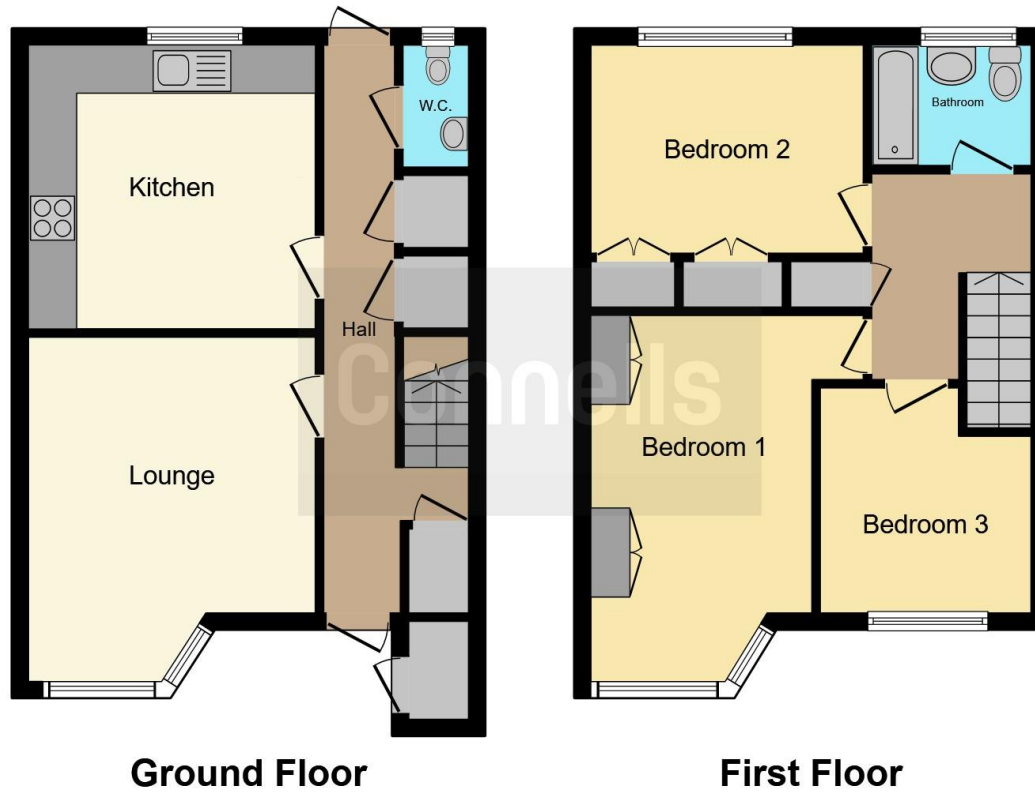
Bathroom

Panelled bath with mixer taps and shower attachment, low level WC and wash hand basin with double glazed window to the rear.









This floor plan is for illustrative purposes only. It is not drawn to scale. Any measurements, floor areas (including any total floor area), openings and orientation are approximate. No details are guaranteed, they cannot be relied upon for any purpose and they do not form part of any agreement. No liability is taken for any error, omission or misstatement. A party must rely upon its own inspection(s). Powered by www.focalagent.com

To view this property please contact Connells on

T 01707 322 903
E welwyngardencity@connells.co.uk

38 Wigmores North
 WELWYN GARDEN CITY AL8 6PH

EPC Rating: C

Tenure: Freehold

[check out more properties at connells.co.uk](http://connells.co.uk)



1. MONEY LAUNDERING REGULATIONS Intending purchasers will be asked to produce identification documentation at a later stage and we would ask for your co-operation in order that there will be no delay in agreeing the sale. 2. These particulars do not constitute part or all of an offer or contract. 3. The measurements indicated are supplied for guidance only and as such must be considered incorrect. Potential buyers are advised to recheck measurements before committing to any expense. 4. We have not tested any apparatus, equipment, fixtures, fittings or services and it is in the buyers interest to check the working condition of any appliances.

Connells Residential is registered in England and Wales under company number 1489613, Registered Office is Cumbria House, 16-20 Hockliffe Street, Leighton Buzzard, Bedfordshire, LU7 1GN. VAT Registration Number is 500 2481 05.

See all our properties at www.connells.co.uk | www.rightmove.co.uk | www.zoopla.co.uk

Property Ref: WWY306789 - 0006