



Connells

Thistle Grove
Welwyn Garden City

Thistle Grove Welwyn Garden City AL7 4AN

for sale offers in excess of
£400,000



Property Description

A well-presented three-bedroom terraced home offering great potential to any prospective buyers with option to extend to the rear STPP. It has been tastefully decorated, offering three bedrooms, bathroom, kitchen/ diner, large living room with patio doors leading to a good-sized garden.

Located in the sought after Thistle Grove area, this home is within walking distance to schools, open countryside, the Commons nature reserve, Hall Grove surgery, shops as well as the stunning Holwell Hyde Lake, Panshanger park and Cole Green way.

Welwyn Garden City is in Hertfordshire and was the second Garden City in England. The town offers a wide range of amenities and shops including John Lewis Department store, The Howard shopping centre and Waitrose. The Mainline Rail Station has direct routes to London Kings Cross (In less than 30 minutes) and the Town also has great access to the A1(M).

Lounge

19' 9" x 12' 4" (6.02m x 3.76m)

Wood laminate flooring, double glazed patio doors, double glazed window to front aspect, radiators.

Kitchen

14' 9" x 9' 3" (4.50m x 2.82m)

Double glazed window to rear aspect, door leading to garden, range of wall and base level units, worktops, tiled flooring, sink with drainer, space for oven with extractor hood over, plumbing for washing machine, space for fridge freezer.

Landing

Bedroom One

10' 3" x 12' 4" (3.12m x 3.76m)

Double glazed window to front aspect, cupboard, wood laminate flooring, radiator.

Entrance Hall

Wood laminate flooring.



Bedroom Two

9' 4" x 12' 4" (2.84m x 3.76m)

Double glazed window to rear aspect, radiator, wood laminate flooring.

Bedroom Three

10' 10" x 6' 4" (3.30m x 1.93m)

Double glazed to front aspect, wood laminate flooring, radiator.

Bathroom

Frosted double glazed window to rear aspect, part tiled wall, low level wc, heated towel rail, wash hand basin, enclosed bathtub with shower attachment.

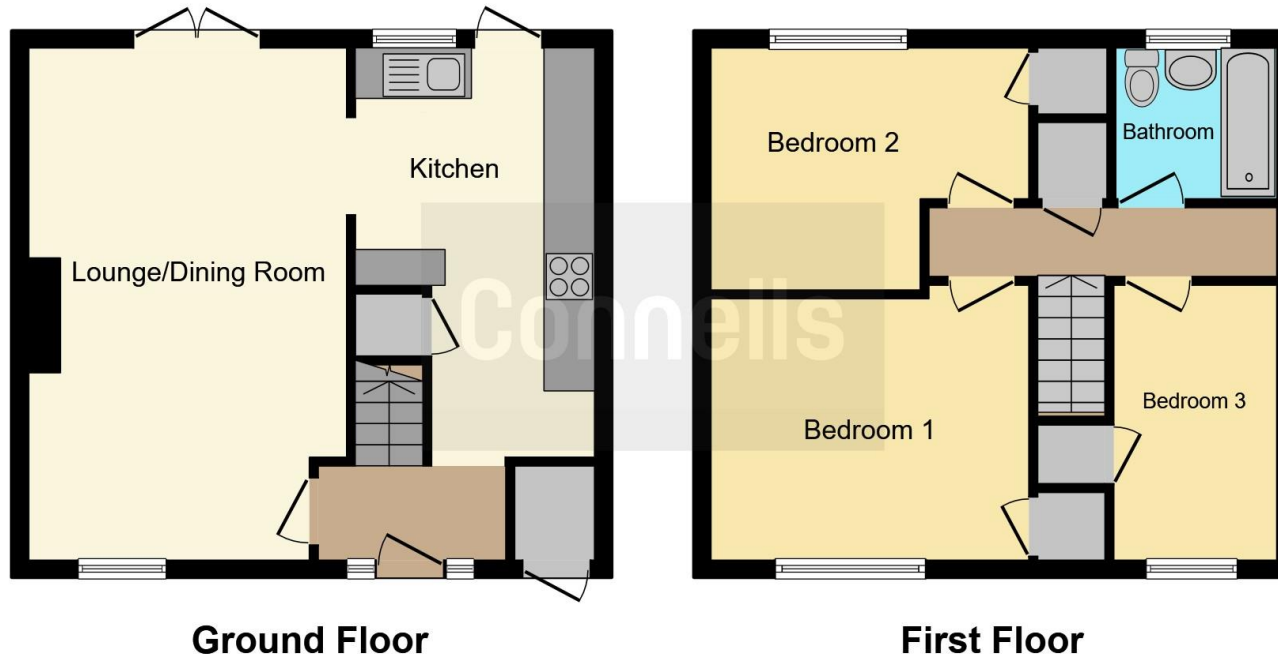
Rear Garden

Artificial lawn, decking area, fence panel enclosed, shed.









This floor plan is for illustrative purposes only. It is not drawn to scale. Any measurements, floor areas (including any total floor area), openings and orientation are approximate. No details are guaranteed, they cannot be relied upon for any purpose and they do not form part of any agreement. No liability is taken for any error, omission or misstatement. A party must rely upon its own inspection(s). Powered by www.focalagent.com

To view this property please contact Connells on

T 01707 322 903
E welwyngardencity@connells.co.uk

38 Wigmores North
 WELWYN GARDEN CITY AL8 6PH

EPC Rating: C

Tenure: Freehold

view this property online connells.co.uk/Property/WWY306662



1. MONEY LAUNDERING REGULATIONS Intending purchasers will be asked to produce identification documentation at a later stage and we would ask for your co-operation in order that there will be no delay in agreeing the sale. 2. These particulars do not constitute part or all an offer or contract. 3. The measurements indicated are supplied for guidance only and as such must be considered incorrect. Potential buyers are advised to recheck measurements before committing to any expense. 4. We have not tested any apparatus, equipment, fixtures, fittings or services and it is in the buyers interest to check the working condition of any appliances.

Connells Residential is registered in England and Wales under company number 1489613, Registered Office is Cumbria House, 16-20 Hockliffe Street, Leighton Buzzard, Bedfordshire, LU7 1GN. VAT Registration Number is 500 2481 05.

See all our properties at www.connells.co.uk | www.rightmove.co.uk | www.zoopla.co.uk

Property Ref: WWY306662 - 0007