



Connells

Salisbury Road
Welwyn Garden City



Property Description

Connells are delighted to bring to market this completely refurbished immaculate three double bedroom end of terrace home in a highly popular area within Welwyn Garden City. Available chain free and having the potential to further extend (stpp) this is a fantastic home for a growing family!

Internally, the ground floor comprises of a spacious lounge/diner, refitted kitchen and an extremely high specification bathroom. There is also under floor heating throughout. The first floor has two double bedrooms and a shower room. Up to the second floor and there is a third double bedroom. The property is on an excellent sized plot and has the potential to be extended further! - A great buy call today to view!

Entrance Hall

Lounge / Dining Area

19' 11" narrowing to x 16' 8" (6.07m narrowing to x 5.08m)

Double glazed window to front aspect, wood laminate flooring.

Kitchen

12' 10" narrowing to x 8' 6" (3.91m narrowing to x 2.59m)

Range of wall and base level units, sink with drainer, gas hob with electric oven, extractor, space for fridge/freezer, wood laminate flooring, and double glazed windows throughout.

Bathroom

High specification throughout, Bathtub with Jacuzzi jets, low level wc, wash hand basin, fully tiled.

Landing

Bedroom One

12' 8" narrowing to x 10' 5" (3.86m narrowing to x 3.17m)

Double glazed to rear aspect, carpeted, and built in cupboard.

Bedroom Two

12' 7" narrowing to x 11' (3.84m narrowing to x 3.35m)

Double glazed Velux windows, carpeted, located on the second floor.

Bedroom Three

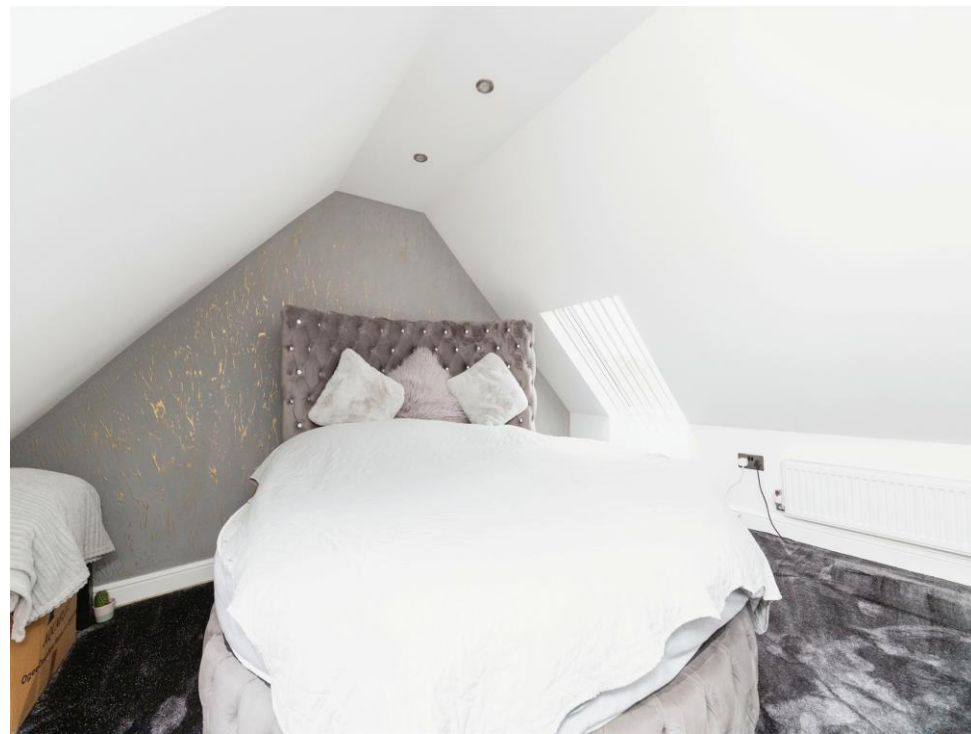
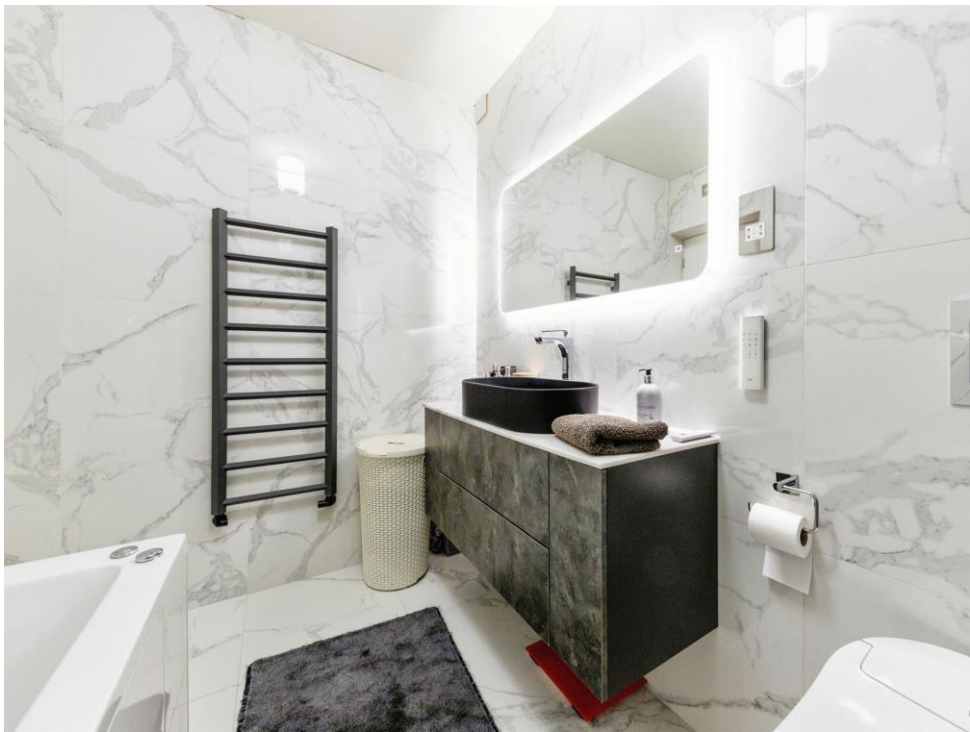
12' 7" narrowing to x 11' (3.84m narrowing to x 3.35m)

Double glazed window to front aspect, carpeted.

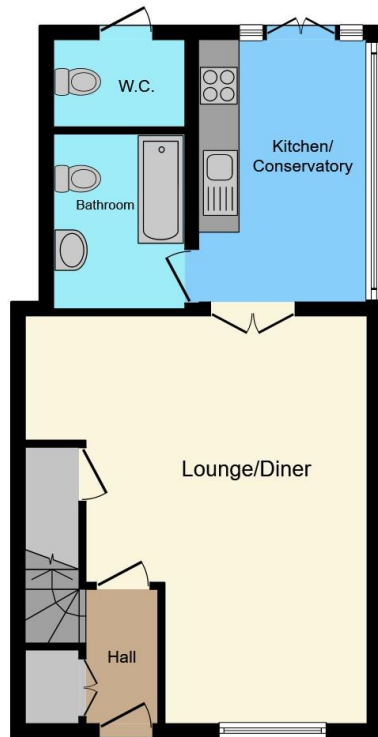
Shower Room

Shower cubicle, low level wc, wash hand basin, tiled.





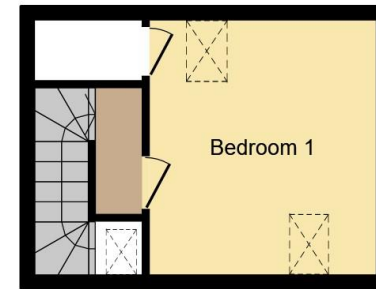




Ground Floor



First Floor



Second Floor

This floor plan is for illustrative purposes only. It is not drawn to scale. Any measurements, floor areas (including any total floor area), openings and orientation are approximate. No details are guaranteed, they cannot be relied upon for any purpose and they do not form part of any agreement. No liability is taken for any error, omission or misstatement. A party must rely upon its own inspection(s). Powered by www.focalagent.com

To view this property please contact Connells on

T 01707 322 903

E welwyngardencity@connells.co.uk

38 Wigmores North
WELWYN GARDEN CITY AL8 6PH

EPC Rating: C

view this property online connells.co.uk/Property/WWY306645

Tenure: Freehold



1. MONEY LAUNDERING REGULATIONS Intending purchasers will be asked to produce identification documentation at a later stage and we would ask for your co-operation in order that there will be no delay in agreeing the sale. 2. These particulars do not constitute part or all of an offer or contract. 3. The measurements indicated are supplied for guidance only and as such must be considered incorrect. Potential buyers are advised to recheck measurements before committing to any expense. 4. We have not tested any apparatus, equipment, fixtures, fittings or services and it is in the buyers interest to check the working condition of any appliances.

Connells Residential is registered in England and Wales under company number 1489613, Registered Office is Cumbria House, 16-20 Hockliffe Street, Leighton Buzzard, Bedfordshire, LU7 1GN. VAT Registration Number is 500 2481 05.

See all our properties at www.connells.co.uk | www.rightmove.co.uk | www.zoopla.co.uk

Property Ref: WWY306645 - 0010