



Connells

Chesterton Avenue
Harpenden



Property Description

A beautifully presented THREE BEDROOM THREE RECEPTION ROOM SEMI DETACHED HOUSE, which is located within a cul de sac off Alwickbury Crescent, close to Crabtree & Alwickbury Schools and less than a mile to Harpenden's Thameslink Station.

Internal viewing is strongly recommended and strictly by appointment through the vendors sole agent, Connells of Harpenden.

Entrance Hall

UPVC front door with obscure double glazed full height wing windows. Karndean Edwardian oak tiled flooring. Coved cornices. Radiator with radiator cover. Doors leading to Lounge and to Kitchen / Dining Room. Stairs leading up to First Floor Landing.

Lounge

13' 3" x 10' 6" (4.04m x 3.20m)
Double glazed windows to front. Karndean Edwardian oak flooring. Double doors leading to:

Kitchen / Dining Room

10' 8" x 17' 9" (3.25m x 5.41m)
Extensive range of white fronted fitted wall and floor units with contrasting wood finish worktop surfaces and matching peninsular unit / breakfast bar. Acrylic one and a half bowl sink unit with mixer tap. Gas hob with cooker hood above. Space for fridge/freezer. Integrated dishwasher. Plumbing for washing machine. Double glazed windows to side and rear and door to garden. Karndean Edwardian oak flooring. Opening onto:

Family Room

10' 4" x 10' 1" (3.15m x 3.07m)
Double glazed windows to rear and side, overlooking rear garden. Vaulted ceiling with ceiling spotlights. Karndean Edwardian oak flooring. Double glazed casement doors leading to rear garden.

Landing

Access to loft via pull down ladder. Double glazed window to side. Coved cornices.

Bedroom 1

13' 1" x 10' 2" (3.99m x 3.10m)

Double glazed windows to front. Covered cornices. Built-in cupboard. Radiator.

Bedroom 2

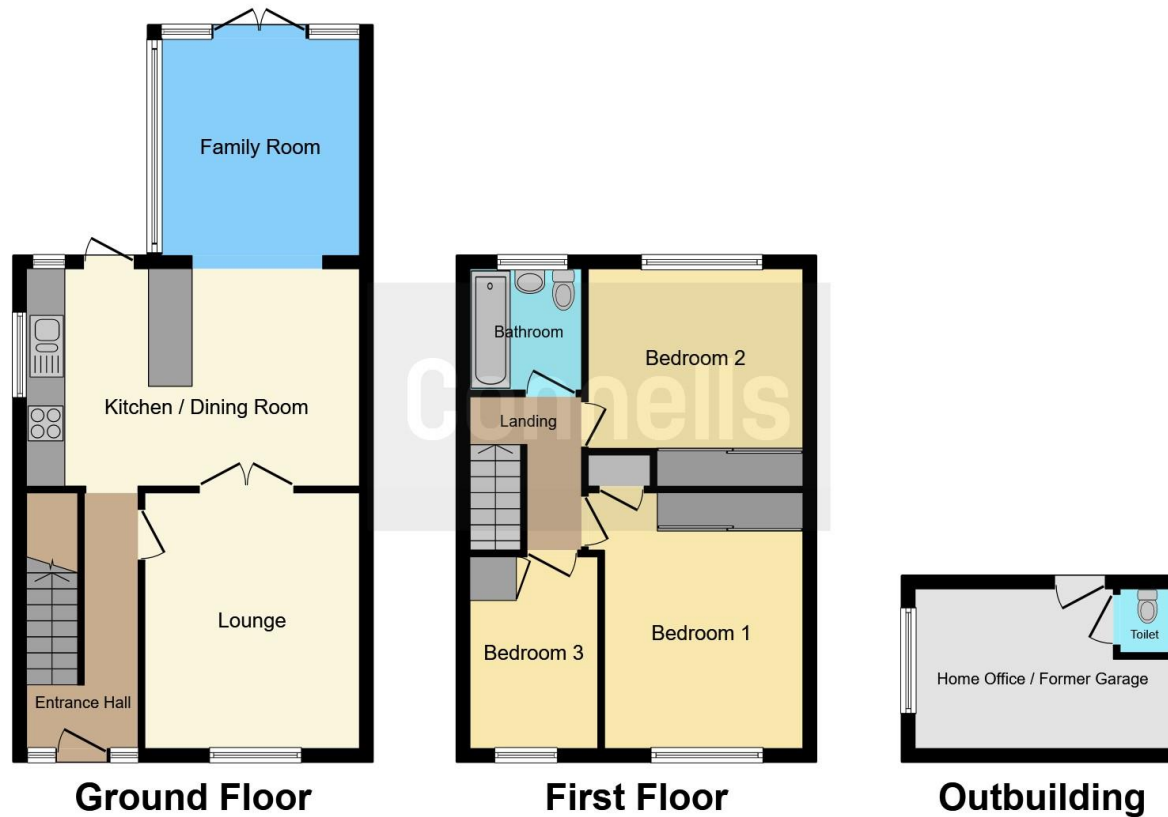
10' 6" x 9' 8" plus recess for wardrobes (3.20m x 2.95m plus recess for wardrobes)

Double glazed windows to rear. Covered cornices. Radiator.









This floorplan is for illustrative purposes only and is not drawn to scale. Measurements, floor-areas, openings and orientations are approximate. They should not be relied upon for any purpose and do not form any part of an agreement. No liability is taken for any error or mis-statement. All parties must rely on their own inspections.

To view this property please contact Connells on

T 01582 760 131
E harpenden@connells.co.uk

50 High Street
 HARPENDEN AL5 2SU

EPC Rating: D

Tenure: Freehold

check out more properties at connells.co.uk



1. MONEY LAUNDERING REGULATIONS Intending purchasers will be asked to produce identification documentation at a later stage and we would ask for your co-operation in order that there will be no delay in agreeing the sale. 2. These particulars do not constitute part or all of an offer or contract. 3. The measurements indicated are supplied for guidance only and as such must be considered incorrect. Potential buyers are advised to recheck measurements before committing to any expense. 4. We have not tested any apparatus, equipment, fixtures, fittings or services and it is in the buyers interest to check the working condition of any appliances.

Connells Residential is registered in England and Wales under company number 1489613, Registered Office is Cumbria House, 16-20 Hockliffe Street, Leighton Buzzard, Bedfordshire, LU7 1GN. VAT Registration Number is 500 2481 05.

See all our properties at www.connells.co.uk | www.rightmove.co.uk | www.zoopla.co.uk

Property Ref: HPN306469 - 0003