



Connells

Willowvale Way
Steeple Claydon Buckingham

Willowvale Way Steeple Claydon Buckingham MK18 2RF

for sale guide price
£440,000



Property Description

Nestled in a tranquil village setting, this modern four-bedroom home offers both style and comfort.

Upon entry, you're greeted by a bright and airy hallway that leads to a convenient downstairs WC. The contemporary kitchen is equipped with ample worktops spanning three walls, perfect for both cooking and entertaining. The spacious lounge is a real highlight, featuring double doors that open into the private rear garden and a sleek media wall, ideal for relaxation and family gatherings.

On the first floor, you'll find two generous double bedrooms, a single bedroom, and a modern three-piece bathroom.

The second floor is home to a stunning master suite, complete with built-in cupboards and an en-suite shower room, offering a perfect retreat at the end of the day.

The property also boasts excellent outdoor space. A large driveway provides ample parking, with access to a garage. The rear garden, deceptively spacious, offers a fantastic area for outdoor living and entertaining. This home blends modern living with peaceful village charm, making it an ideal choice for families seeking both comfort and convenience.

Mortgage Services

Connells Buckingham have a Mortgage Consultant who can offer advice and recommend products based on your circumstances. For more information on our fantastic services, please contact us.



Entrance Hall

Cloakroom

Kitchen/Diner

16' 3" x 8' 7" (4.95m x 2.62m)

Living Room

9' 4" x 16' 2" (2.84m x 4.93m)

Master Bedroom (2nd Floor)

20' 3" max x 16' 2" max (6.17m max x 4.93m max)

Measurements include en-suite space.

En Suite

Bedroom 2

12' 9" x 9' 1" (3.89m x 2.77m)

Bedroom 3

13' 2" max x 9' 1" max (4.01m max x 2.77m max)

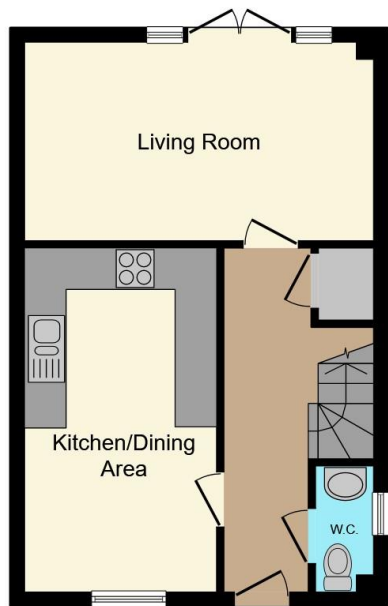
Measurements include airing cupboard (accessible from the landing)

Bedroom 4

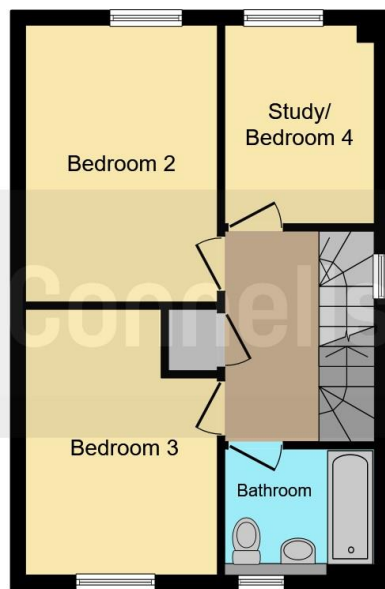
9' 7" x 6' 7" (2.92m x 2.01m)

Bathroom

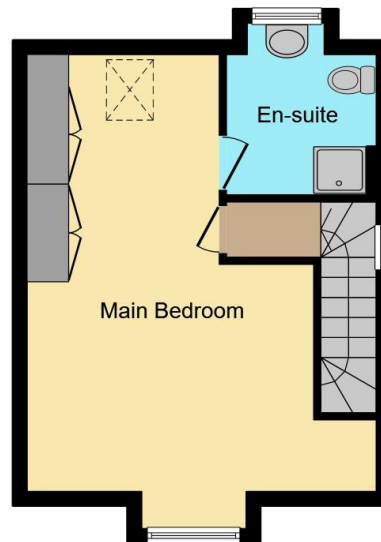




Ground Floor



First Floor



Second Floor

This floor plan is for illustrative purposes only. It is not drawn to scale. Any measurements, floor areas (including any total floor area), openings and orientation are approximate. No details are guaranteed, they cannot be relied upon for any purpose and they do not form part of any agreement. No liability is taken for any error, omission or misstatement. A party must rely upon its own inspection(s). Powered by www.focalagent.com

To view this property please contact Connells on

T 01280 822 727
E buckingham@connells.co.uk

2 West Street
 BUCKINGHAM MK18 1HL

EPC Rating: B

view this property online connells.co.uk/Property/BUK306701



Tenure: Freehold



1. MONEY LAUNDERING REGULATIONS Intending purchasers will be asked to produce identification documentation at a later stage and we would ask for your co-operation in order that there will be no delay in agreeing the sale. 2. These particulars do not constitute part or all of an offer or contract. 3. The measurements indicated are supplied for guidance only and as such must be considered incorrect. Potential buyers are advised to recheck measurements before committing to any expense. 4. We have not tested any apparatus, equipment, fixtures, fittings or services and it is in the buyers interest to check the working condition of any appliances.

Connells Residential is registered in England and Wales under company number 1489613, Registered Office is Cumbria House, 16-20 Hockliffe Street, Leighton Buzzard, Bedfordshire, LU7 1GN. VAT Registration Number is 500 2481 05.

See all our properties at www.connells.co.uk | www.rightmove.co.uk | www.zoopla.co.uk

Property Ref: BUK306701 - 0008