



Connells

Hadrian Crescent
LEIGHTON BUZZARD

Hadrian Crescent LEIGHTON BUZZARD LU7 4EH

for sale
£375,000



Property Description

This three-bedroom semi-detached house is located in a modern new-build estate, offering contemporary living in a desirable location. The property features a well-sized garden, perfect for outdoor relaxation, and comes with allocated parking for convenience.

Inside, the ground floor boasts a spacious lounge and to the rear of the property, there is a bright and airy kitchen diner, offering ample room for cooking and entertaining. A convenient downstairs W/C adds practicality to the layout.

Upstairs, the master bedroom includes an en-suite bathroom, providing privacy and comfort. There are two additional bedrooms: a good-sized double room, and a single bedroom that's still large enough to be a functional space, ideal for a child's room, guest room, or home office. The overall feel of the house is light, modern, and well-suited to a variety of lifestyles, making it an attractive option for families or professionals.

Entrance Hall

Radiator.

Cloakroom

Double glazed window. WC. Wash hand basin. Radiator. Tiled walls.

Lounge

17' 5" max x 11' 4" max (5.31m max x 3.45m max)

Double glazed window. Radiator. Built in storage. Sun-bleached oak Amtico flooring.

Kitchen

15' x 11' 5" (4.57m x 3.48m)

Double glazed window. Fitted kitchen with wall and base units. Radiator. Plumbing for washing machine. Integrated fridge freezer. 1.5 bowl stainless steel sink and drainer. Gas hob with cooker hood over. Integrated oven. Sun-bleached Oak Amtico flooring. Double glazed patio doors to garden.

Landing

Built in storage. Loft access. Carpeted flooring.

Bedroom One

11' 8" max x 11' 5" max (3.56m max x 3.48m max)

Double glazed window. Built in storage. Radiator. Carpeted flooring.

En-Suite To Bedroom One

Double glazed window. Shower cubicle. WC. Wash hand basin. Radiator.

Bedroom Two

11' 3" x 8' 2" (3.43m x 2.49m)

Double glazed window. Radiator. Carpeted flooring.

Bedroom Three

8' x 6' 7" (2.44m x 2.01m)

Double glazed window. Radiator. Carpeted flooring

Bathroom

Bath with shower over and glass shower screen. Radiator. WC. Wash hand basin. Partly tiled walls.

Outside

Front Garden

Hedges to border. Pathway to front door.

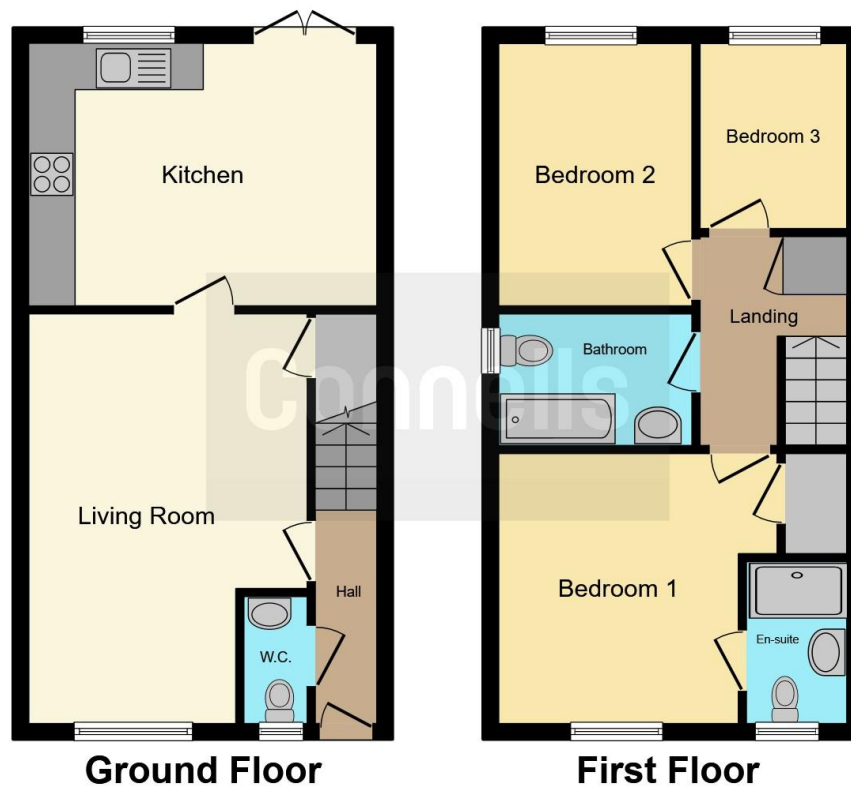
Rear Garden

Two level rear garden. Patio. Stairs to lower level. Mainly laid to lawn. Shed. Wooden panelled fencing to borders. Side access.









This floor plan is for illustrative purposes only. It is not drawn to scale. Any measurements, floor areas (including any total floor area), openings and orientation are approximate. No details are guaranteed, they cannot be relied upon for any purpose and they do not form part of any agreement. No liability is taken for any error, omission or misstatement. A party must rely upon its own inspection(s). Powered by www.focalagent.com

To view this property please contact Connells on

T 01525 372 588
E leightonbuzzard@connells.co.uk

4 Market Square
 LEIGHTON BUZZARD LU7 1HA

EPC Rating: B

view this property online connells.co.uk/Property/LBC311195

Tenure: Freehold



1. MONEY LAUNDERING REGULATIONS Intending purchasers will be asked to produce identification documentation at a later stage and we would ask for your co-operation in order that there will be no delay in agreeing the sale. 2. These particulars do not constitute part or all of an offer or contract. 3. The measurements indicated are supplied for guidance only and as such must be considered incorrect. Potential buyers are advised to recheck measurements before committing to any expense. 4. We have not tested any apparatus, equipment, fixtures, fittings or services and it is in the buyers interest to check the working condition of any appliances.

Connells Residential is registered in England and Wales under company number 1489613, Registered Office is Cumbria House, 16-20 Hockliffe Street, Leighton Buzzard, Bedfordshire, LU7 1GN. VAT Registration Number is 500 2481 05.

See all our properties at www.connells.co.uk | www.rightmove.co.uk | www.zoopla.co.uk

Property Ref: LBC311195 - 0008