



**Connells**

Dorset Close  
Bletchley Milton Keynes



# Dorset Close Bletchley Milton Keynes MK3 7HZ

for sale  
£290,000



## Property Description

Offered to market with no onward chain is this three bedroom end-of-terrace property located within a cul-de-sac in the highly sought after 'West Bletchley' area. Accommodation comprises entrance hall, living room and kitchen/diner all on the ground floor. To the first floor there are three bedrooms, a bathroom and a separate WC.

Dorset Close is a cul-de-sac located in West Bletchley and offers access to numerous amenities including Schools and Shops whilst also maintaining close proximity to transport links including Bletchley train station, numerous bus stops and the A5 and M1 road networks.

Offered to market with no onward chain is this three bedroom end-of-terrace property located within a cul-de-sac in the highly sought after 'West Bletchley' area. Accommodation comprises entrance hall, living room and kitchen/diner all on the ground floor. To the first floor there are three bedrooms, a bathroom and a separate WC.

Dorset Close is a cul-de-sac located in West Bletchley and offers access to numerous amenities including Schools and Shops whilst also maintaining close proximity to transport links including Bletchley train station, numerous bus stops and the A5 and M1 road networks.

Offered to market with no onward chain is this three bedroom end-of-terrace property located within a cul-de-sac in the highly sought after 'West Bletchley' area. Accommodation comprises entrance hall, living room and kitchen/diner all on the ground floor. To the first floor there are three bedrooms, a bathroom and a separate WC.

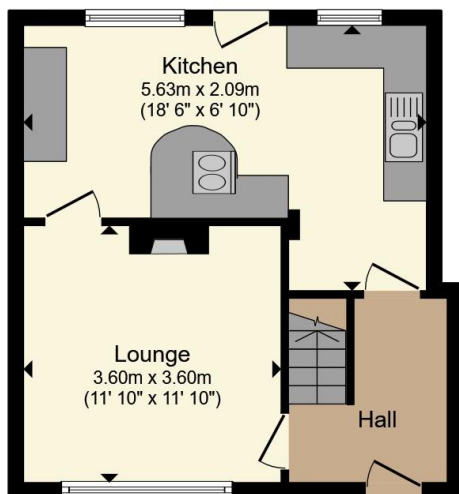
Dorset Close is a cul-de-sac located in West Bletchley and offers access to numerous amenities including Schools and Shops whilst also maintaining close proximity to transport links including Bletchley train station, numerous bus stops and the A5 and M1 road networks.

Offered to market with no onward chain is this three bedroom end-of-terrace property located within a cul-de-sac in the highly sought after 'West Bletchley' area. Accommodation comprises entrance hall, living room and kitchen/diner all on the ground floor. To the first floor there are three bedrooms, a bathroom and a separate WC.

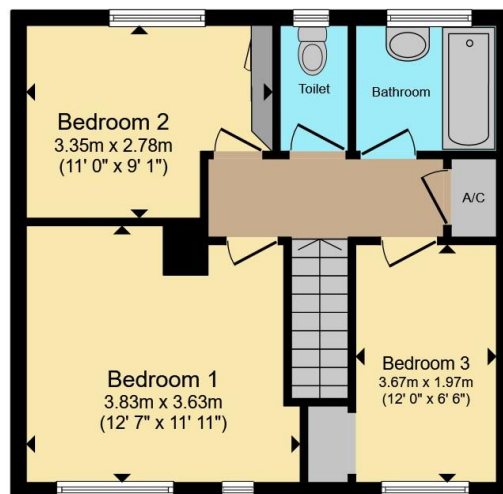
Dorset Close is a cul-de-sac located in West Bletchley and offers access to numerous amenities including Schools and Shops whilst also maintaining close proximity to transport links including Bletchley train station, numerous bus stops and the A5 and M1 road networks.



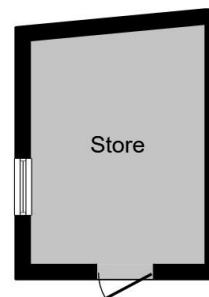




**Ground Floor**



**First Floor**



**Outbuilding**

Total floor area 86.7 m<sup>2</sup> (934 sq.ft.) approx

This floor plan is for illustrative purposes only. It is not drawn to scale. Any measurements, floor areas (including any total floor area), openings and orientation are approximate. No details are guaranteed, they cannot be relied upon for any purpose and they do not form part of any agreement. No liability is taken for any error, omission or misstatement. A party must rely upon its own inspection(s). Powered by [www.propertybox.io](http://www.propertybox.io)

**Connells**



To view this property please contact Connells on

**T 01908 375 241**  
**E [bletchley@connells.co.uk](mailto:bletchley@connells.co.uk)**

188 Queensway Bletchley  
MILTON KEYNES MK2 2SW

EPC Rating: C Council Tax  
Band: B

Tenure: Freehold

**view this property online [connells.co.uk/Property/BLE311783](http://connells.co.uk/Property/BLE311783)**



1. MONEY LAUNDERING REGULATIONS Intending purchasers will be asked to produce identification documentation at a later stage and we would ask for your co-operation in order that there will be no delay in agreeing the sale. 2. These particulars do not constitute part or all of an offer or contract. 3. The measurements indicated are supplied for guidance only and as such must be considered incorrect. Potential buyers are advised to recheck measurements before committing to any expense. 4. We have not tested any apparatus, equipment, fixtures, fittings or services and it is in the buyers interest to check the working condition of any appliances.

Connells Residential is registered in England and Wales under company number 1489613, Registered Office is Cumbria House, 16-20 Hockliffe Street, Leighton Buzzard, Bedfordshire, LU7 1GN. VAT Registration Number is 500 2481 05.

**See all our properties at [www.connells.co.uk](http://www.connells.co.uk) | [www.rightmove.co.uk](http://www.rightmove.co.uk) | [www.zoopla.co.uk](http://www.zoopla.co.uk)**

Property Ref: BLE311783 - 0002