

for sale

£375,000

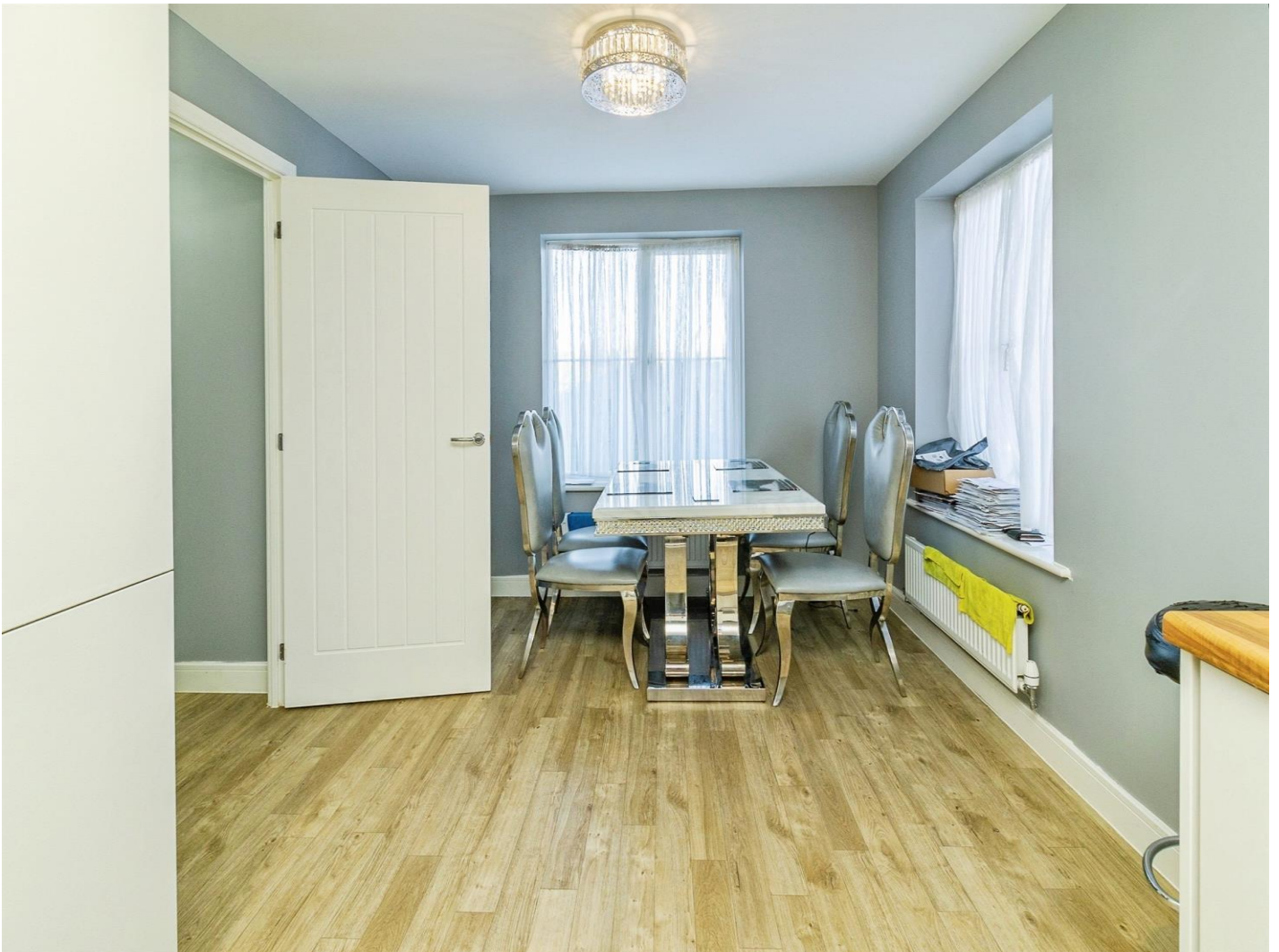


Longships Drive Bletchley Milton Keynes MK3 5RT

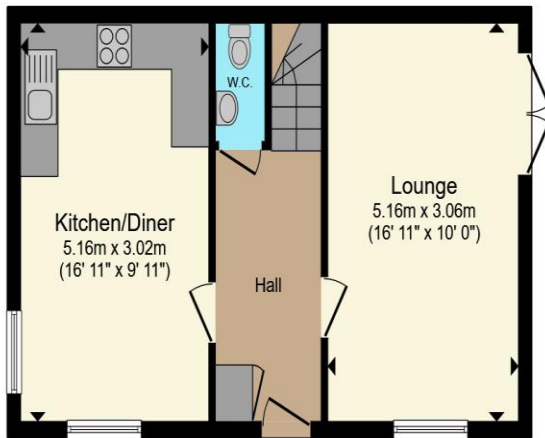
Connells are delighted to offer to market this well-presented three-bedroom end-of-terrace property situated within the highly desired area of Newton Leys.



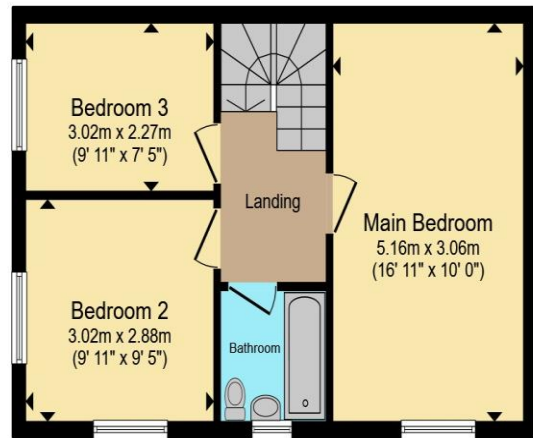
Longships Drive Bletchley Milton Keynes MK3 5RT







Ground Floor



First Floor

Total floor area 82.4 m² (886 sq.ft.) approx

This floor plan is for illustrative purposes only. It is not drawn to scale. Any measurements, floor areas (including any total floor area), openings and orientation are approximate. No details are guaranteed, they cannot be relied upon for any purpose and they do not form part of any agreement. No liability is taken for any error, omission or misstatement. A party must rely upon its own inspection(s). Powered by www.propertybox.io

Connells

To view this property please contact Connells on

T 01908 375 241
E bletchley@connells.co.uk

188 Queensway Bletchley
MILTON KEYNES MK2 2SW

Property Ref: BLE311642 - 0003

Tenure:Freehold EPC Rating: B

Council Tax Band: C

check out more properties at connells.co.uk



1. MONEY LAUNDERING REGULATIONS Intending purchasers will be asked to produce identification documentation at a later stage and we would ask for your co-operation in order that there will be no delay in agreeing the sale. 2. These particulars do not constitute part or all of an offer or contract. 3. The measurements indicated are supplied for guidance only and as such must be considered incorrect. Potential buyers are advised to recheck measurements before committing to any expense. 4. We have not tested any apparatus, equipment, fixtures, fittings or services and it is in the buyers interest to check the working condition of any appliances.

Connells Residential is registered in England and Wales under company number 1489613, Registered Office is Cumbria House, 16-20 Hockliffe Street, Leighton Buzzard, Bedfordshire, LU7 1GN. VAT Registration Number is 500 2481 05.

see all our properties at www.connells.co.uk | www.rightmove.co.uk | www.zoopla.co.uk