



**Connells**

Nevis Grove  
Bletchley Milton Keynes



# Nevis Grove Bletchley Milton Keynes MK2 3NY

for sale  
**£225,000**



## Property Description

We are delighted to present this lovely and well-located three bedroom property on Nevis Grove, Bletchley, now available for sale. This generously sized home features a welcoming entrance hall with stairs leading to the first floor with a spacious living to the ground floor, a good sized kitchen/diner and a WC for convenience.

To the first floor there is three bedrooms, two doubles and a good sized single bedroom. The upstairs also benefits from a modern family bathroom.

Situated in a popular area close to local schools, amenities, and transport links, this property offers both comfort and potential.

## Entrance Hall

Enter via a UPVC front door. Access to all downstairs rooms and staircase to the first floor landing. Wall mounted radiator. Storage situated understairs.

## Cloakroom

WC and wash hand basin.

## Kitchen/Diner

16' 7" x 8' 5" ( 5.05m x 2.57m )

A well-presented kitchen benefitting from a range of wall and base level units. Space for a washing machine, dishwasher, cooker and a fridge freezer. Wall mounted radiator. Stainless steel sink and drainer. UPVC double-glazed window to front aspect.

## Living Room

14' 11" x 13' 10" ( 4.55m x 4.22m )

A generously sized living room benefitting from two UPVC double-glazed windows to front aspect. UPVC door to rear aspect to access the garden. Wall mounted radiator.

## First Floor

## Landing

Rise from entrance hall. Two built-in storage cupboards.

## Bedroom One

14' 2" x 8' 6" ( 4.32m x 2.59m )

A double bedroom benefitting from a UPVC double-glazed window to front aspect and a wall mounted radiator.

## Bedroom Two

13' 11" x 8' 7" ( 4.24m x 2.62m )

A double bedroom benefitting from a UPVC double-glazed window to rear aspect and a wall mounted radiator.

## Bedroom Three

11' 2" x 6' 2" ( 3.40m x 1.88m )

UPVC double-glazed window to rear aspect and a wall mounted radiator.

## Bathroom

A three-piece suite consisting of WC, wash hand basin vanity unit and a bathtub with an attached shower. Chrome heated towel rail. UPVC double-glazed opaque window to rear aspect.

## Outside

## Front Garden

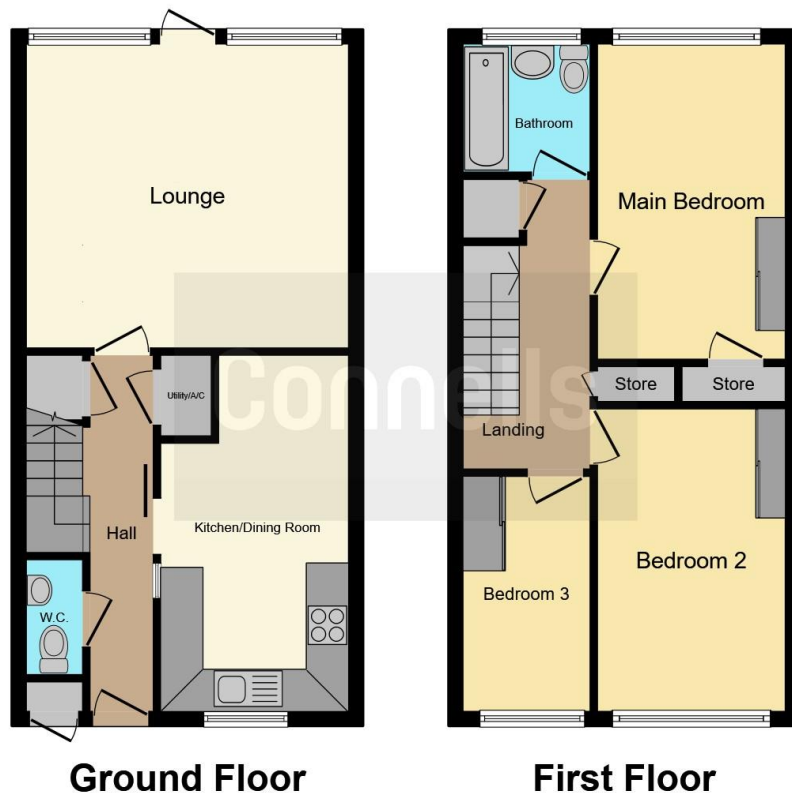
Gated front garden with a patio walkway leading to the front door.

## Rear Garden

Enclosed by timber fencing. Laid to lawn with a patio area. Shed to remain.







This floor plan is for illustrative purposes only. It is not drawn to scale. Any measurements, floor areas (including any total floor area), openings and orientation are approximate. No details are guaranteed, they cannot be relied upon for any purpose and they do not form part of any agreement. No liability is taken for any error, omission or misstatement. A party must rely upon its own inspection(s). Powered by [www.focalagent.com](http://www.focalagent.com)

To view this property please contact Connells on

**T 01908 375 241**  
**E [bletchley@connells.co.uk](mailto:bletchley@connells.co.uk)**

188 Queensway Bletchley  
 MILTON KEYNES MK2 2SW

EPC Rating: C Council Tax  
 Band: A

**view this property online [connells.co.uk/Property/BLE311514](http://connells.co.uk/Property/BLE311514)**



Tenure: Freehold



1. MONEY LAUNDERING REGULATIONS Intending purchasers will be asked to produce identification documentation at a later stage and we would ask for your co-operation in order that there will be no delay in agreeing the sale. 2. These particulars do not constitute part or all of an offer or contract. 3. The measurements indicated are supplied for guidance only and as such must be considered incorrect. Potential buyers are advised to recheck measurements before committing to any expense. 4. We have not tested any apparatus, equipment, fixtures, fittings or services and it is in the buyers interest to check the working condition of any appliances.

Connells Residential is registered in England and Wales under company number 1489613, Registered Office is Cumbria House, 16-20 Hockliffe Street, Leighton Buzzard, Bedfordshire, LU7 1GN. VAT Registration Number is 500 2481 05.

**See all our properties at [www.connells.co.uk](http://www.connells.co.uk) | [www.rightmove.co.uk](http://www.rightmove.co.uk) | [www.zoopla.co.uk](http://www.zoopla.co.uk)**

Property Ref: BLE311514 - 0023