



Not for marketing purposes INTERNAL USE ONLY

Mentieth Close
Bletchley Milton Keynes

Mentieth Close Bletchley Milton Keynes MK2 3EU

for sale
£260,000



Property Description

Located in the ever popular Lakes development in Bletchley is this very well presented three bedroom mid-terraced family home.

Accommodation comprises entrance hall, cloakroom, kitchen and lounge all on the ground floor. To the first floor there is three well-proportioned bedrooms and a family bathroom. Outside there is a front and rear garden. This property benefits from a garage to the rear of the property.

The Lakes development offers access to numerous amenities including schools and shops, Whilst maintaining close proximity to transport links including Bletchley train station, bus stops and the M1 and A5 road networks. Located in the ever popular Lakes development in Bletchley is this very well presented three bedroom mid-terraced family home.

Accommodation comprises entrance hall, cloakroom, kitchen and lounge all on the ground floor. To the first floor there is three well-proportioned bedrooms and a family bathroom. Outside there is a front and rear garden. This property benefits from a garage to the rear of the property.

The Lakes development offers access to numerous amenities including schools and shops, Whilst maintaining close proximity to transport links including Bletchley train station, bus stops and the M1 and A5 road networks. Located in the ever popular Lakes development in Bletchley is this very well presented three bedroom mid-terraced family home.

Accommodation comprises entrance hall, cloakroom, kitchen and lounge all on the ground floor. To the first floor there is three well-proportioned bedrooms and a family bathroom. Outside there is a front and rear garden. This property benefits from a garage to the rear of the property.

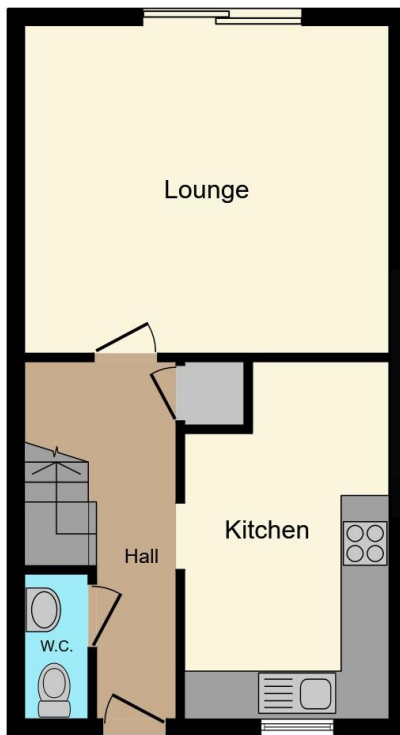
The Lakes development offers access to numerous amenities including schools and shops, Whilst maintaining close proximity to transport links including Bletchley train station, bus stops and the M1 and A5 road networks.

Located in the ever popular Lakes development in Bletchley is this very well presented three bedroom mid-terraced family home.

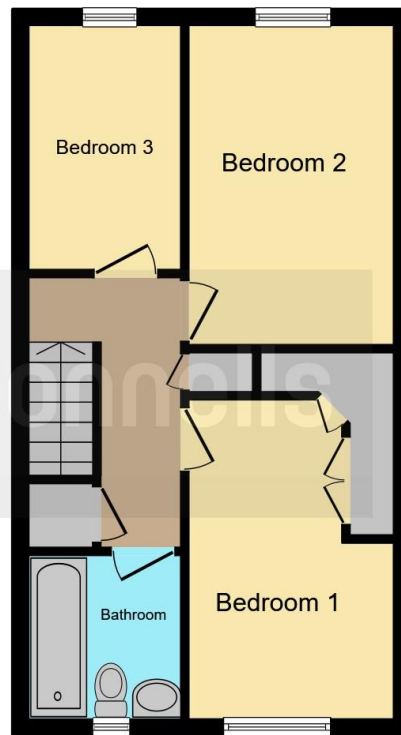
Accommodation comprises entrance hall, cloakroom, kitchen and lounge all on the ground floor. To the first floor there is three well-proportioned bedrooms and a family bathroom. Outside there is a front and rear garden. This property benefits from a garage to the rear of the property.

The Lakes development offers access to numerous amenities including schools and shops, Whilst maintaining close proximity to transport links including Bletchley train station, bus stops and the M1 and A5 road networks.

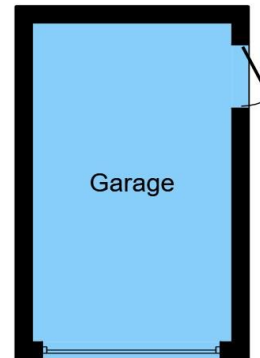




Ground Floor



First Floor



Garage

This floor plan is for illustrative purposes only. It is not drawn to scale. Any measurements, floor areas (including any total floor area), openings and orientation are approximate. No details are guaranteed, they cannot be relied upon for any purpose and they do not form part of any agreement. No liability is taken for any error, omission or misstatement. A party must rely upon its own inspection(s). Powered by www.focalagent.com

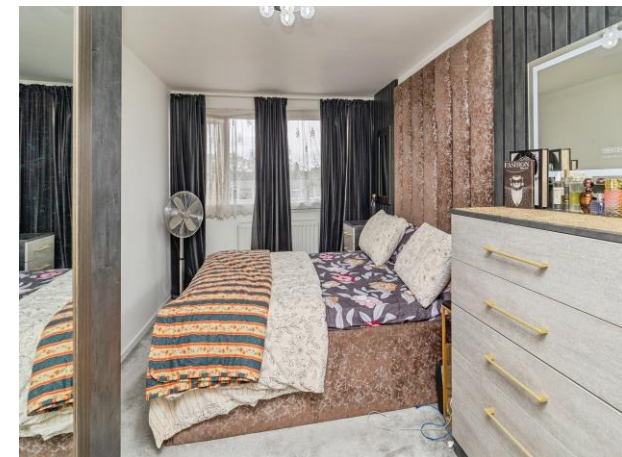
To view this property please contact Connells on

T 01908 375 241
E bletchley@connells.co.uk

188 Queensway Bletchley
 MILTON KEYNES MK2 2SW

EPC Rating: D Council Tax
 Band: A

check out more properties at connells.co.uk



Tenure: Freehold



1. MONEY LAUNDERING REGULATIONS Intending purchasers will be asked to produce identification documentation at a later stage and we would ask for your co-operation in order that there will be no delay in agreeing the sale. 2. These particulars do not constitute part or all of an offer or contract. 3. The measurements indicated are supplied for guidance only and as such must be considered incorrect. Potential buyers are advised to recheck measurements before committing to any expense. 4. We have not tested any apparatus, equipment, fixtures, fittings or services and it is in the buyers interest to check the working condition of any appliances.

Connells Residential is registered in England and Wales under company number 1489613, Registered Office is Cumbria House, 16-20 Hockliffe Street, Leighton Buzzard, Bedfordshire, LU7 1GN. VAT Registration Number is 500 2481 05.

See all our properties at www.connells.co.uk | www.rightmove.co.uk | www.zoopla.co.uk

Property Ref: BLE311410 - 0002